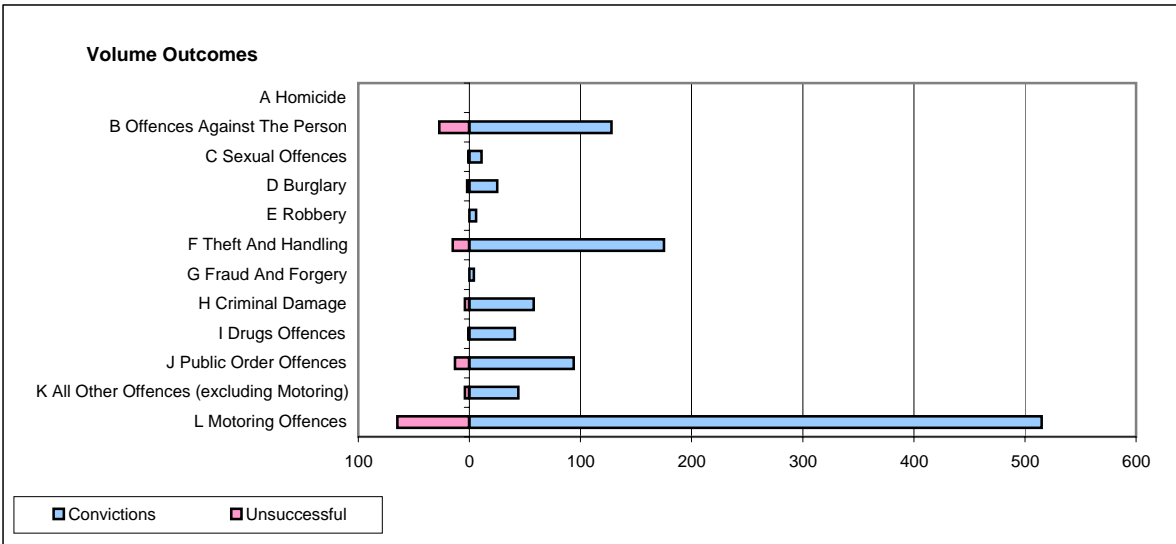
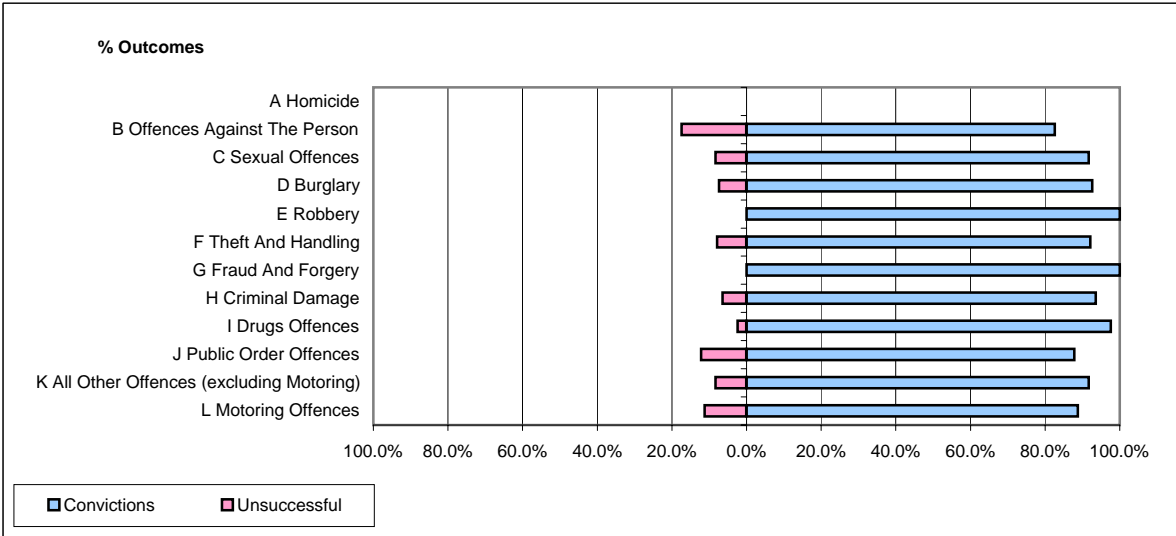


CPS OUTCOMES BY PRINCIPAL OFFENCE CATEGORY

May 2007

P26-Norfolk



	Convictions		Unsuccessful	
	Number of Defendants	%	Number of Defendants	%
A Homicide	0	#DIV/0!	0	#DIV/0!
B Offences Against The Person	128	82.6%	27	17.4%
C Sexual Offences	11	91.7%	1	8.3%
D Burglary	25	92.6%	2	7.4%
E Robbery	6	100.0%	0	0.0%
F Theft And Handling	175	92.1%	15	7.9%
G Fraud And Forgery	4	100.0%	0	0.0%
H Criminal Damage	58	93.5%	4	6.5%
I Drugs Offences	41	97.6%	1	2.4%
J Public Order Offences	94	87.9%	13	12.1%
K All Other Offences (excluding Motoring)	44	91.7%	4	8.3%
L Motoring Offences	515	88.8%	65	11.2%
Admin Finalisations	0	0.0%	30	100.0%
TOTAL	1,101	87.2%	162	12.8%