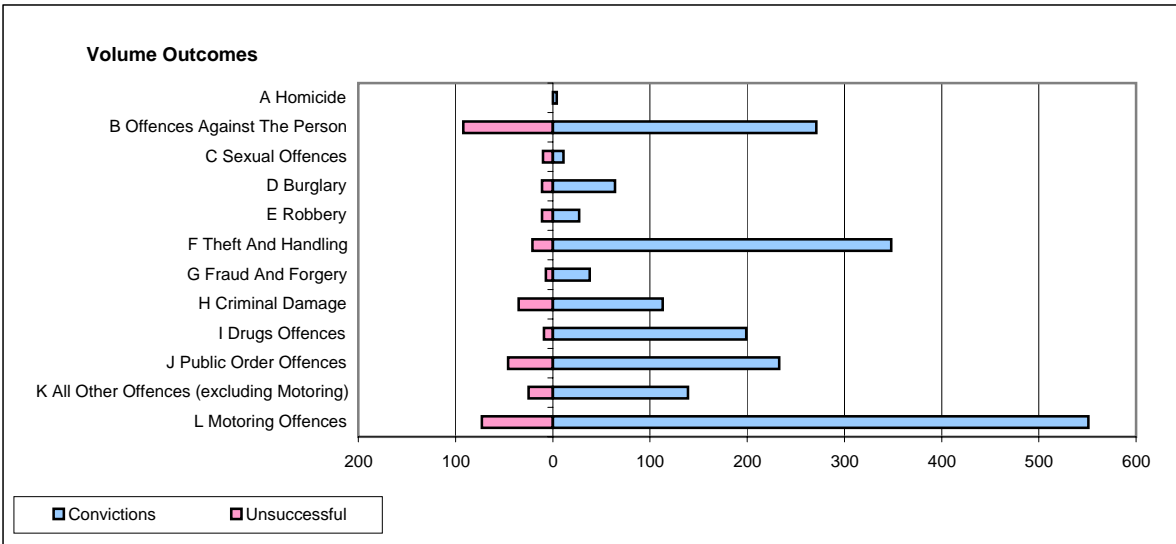
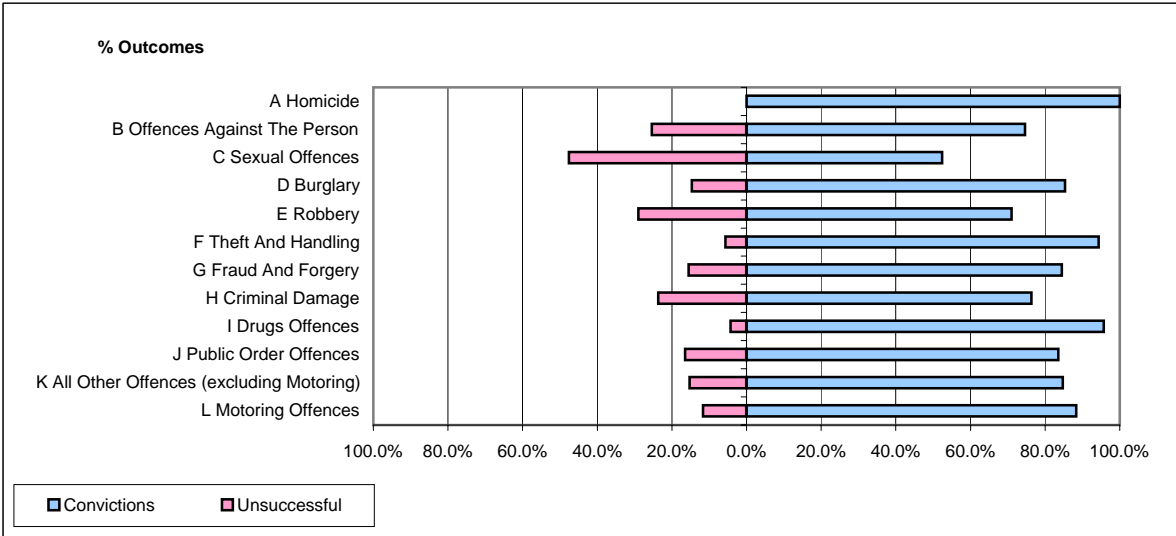


CPS OUTCOMES BY PRINCIPAL OFFENCE CATEGORY

May 2007

P24-Merseyside



	Convictions		Unsuccessful	
	Number of Defendants	%	Number of Defendants	%
A Homicide	4	100.0%	0	0.0%
B Offences Against The Person	271	74.7%	92	25.3%
C Sexual Offences	11	52.4%	10	47.6%
D Burglary	64	85.3%	11	14.7%
E Robbery	27	71.1%	11	28.9%
F Theft And Handling	348	94.3%	21	5.7%
G Fraud And Forgery	38	84.4%	7	15.6%
H Criminal Damage	113	76.4%	35	23.6%
I Drugs Offences	199	95.7%	9	4.3%
J Public Order Offences	233	83.5%	46	16.5%
K All Other Offences (excluding Motoring)	139	84.8%	25	15.2%
L Motoring Offences	551	88.3%	73	11.7%
Admin Finalisations	0	0.0%	38	100.0%
TOTAL	1,998	84.1%	378	15.9%