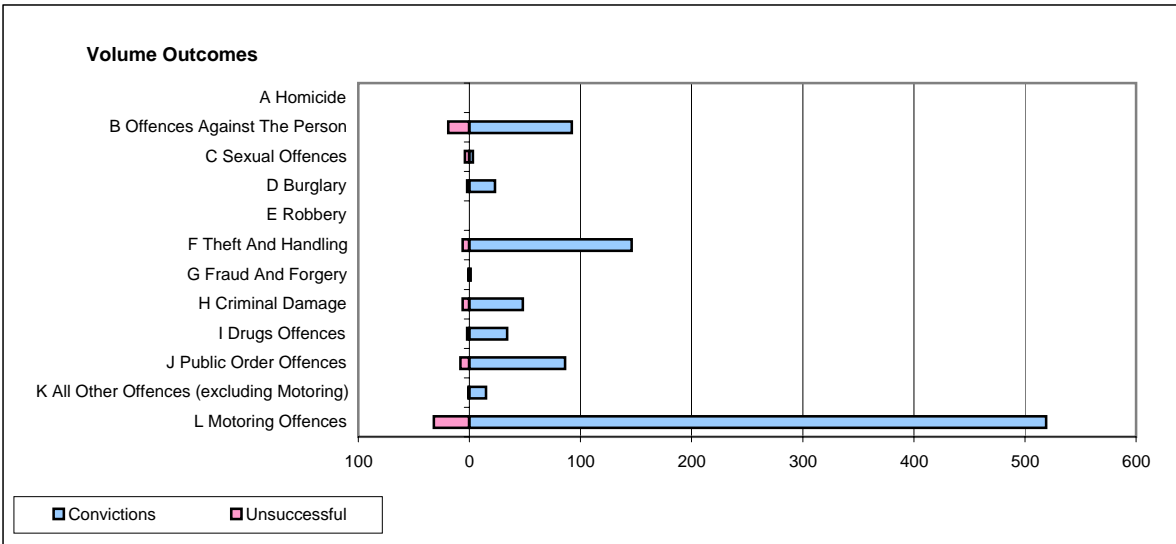
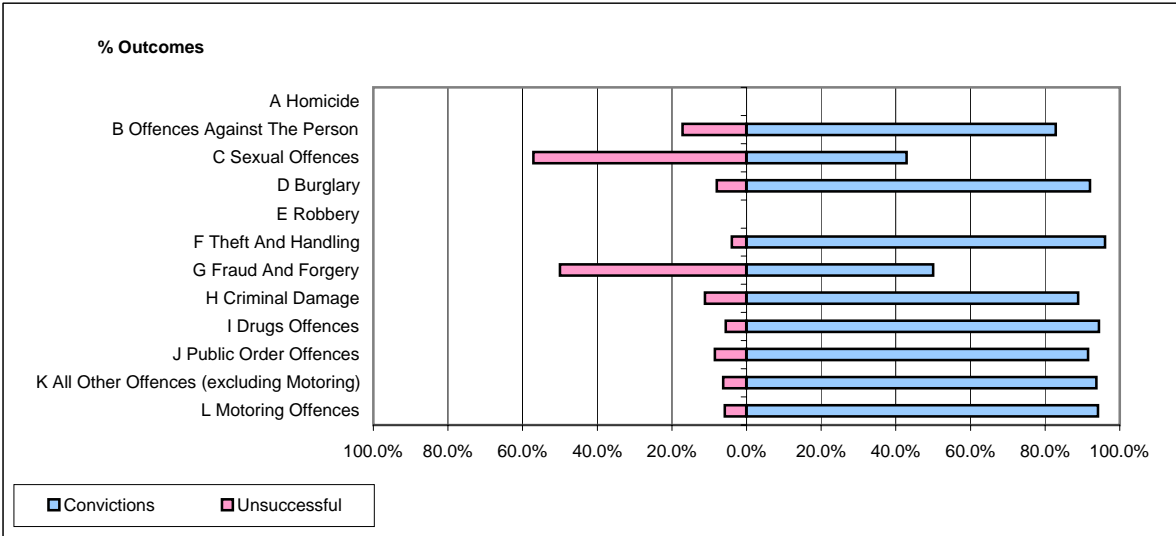


**CPS OUTCOMES BY PRINCIPAL OFFENCE CATEGORY**

**May 2007**

**P23-Lincolnshire**



	Convictions		Unsuccessful	
	Number of Defendants	%	Number of Defendants	%
<b>A Homicide</b>	0	#DIV/0!	0	#DIV/0!
<b>B Offences Against The Person</b>	92	82.9%	19	17.1%
<b>C Sexual Offences</b>	3	42.9%	4	57.1%
<b>D Burglary</b>	23	92.0%	2	8.0%
<b>E Robbery</b>	0	#DIV/0!	0	#DIV/0!
<b>F Theft And Handling</b>	146	96.1%	6	3.9%
<b>G Fraud And Forgery</b>	1	50.0%	1	50.0%
<b>H Criminal Damage</b>	48	88.9%	6	11.1%
<b>I Drugs Offences</b>	34	94.4%	2	5.6%
<b>J Public Order Offences</b>	86	91.5%	8	8.5%
<b>K All Other Offences (excluding Motoring)</b>	15	93.8%	1	6.3%
<b>L Motoring Offences</b>	519	94.2%	32	5.8%
<b>Admin Finalisations</b>	0	0.0%	9	100.0%
<b>TOTAL</b>	967	91.5%	90	8.5%