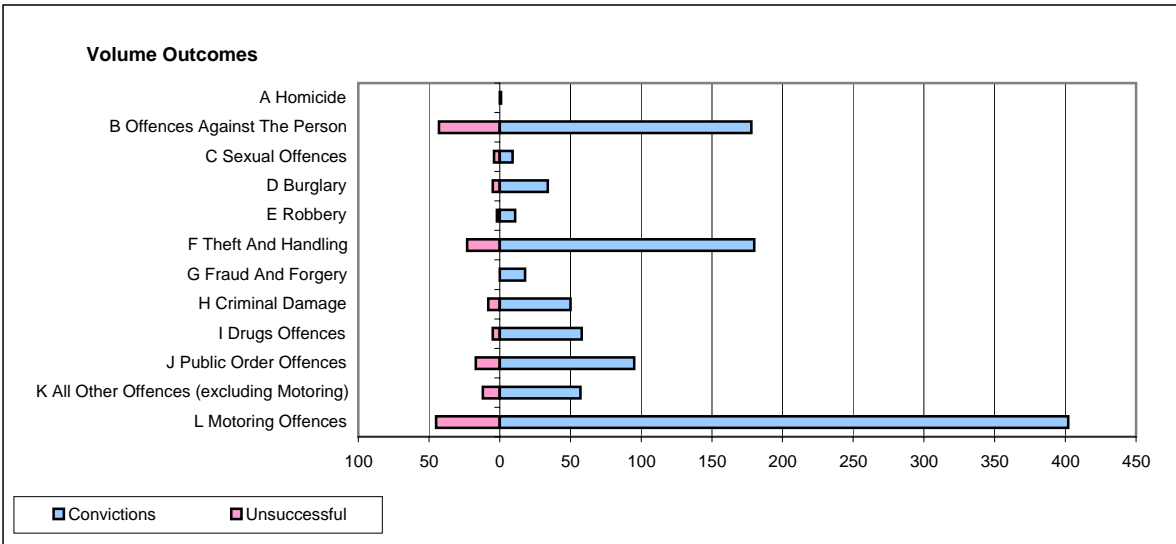
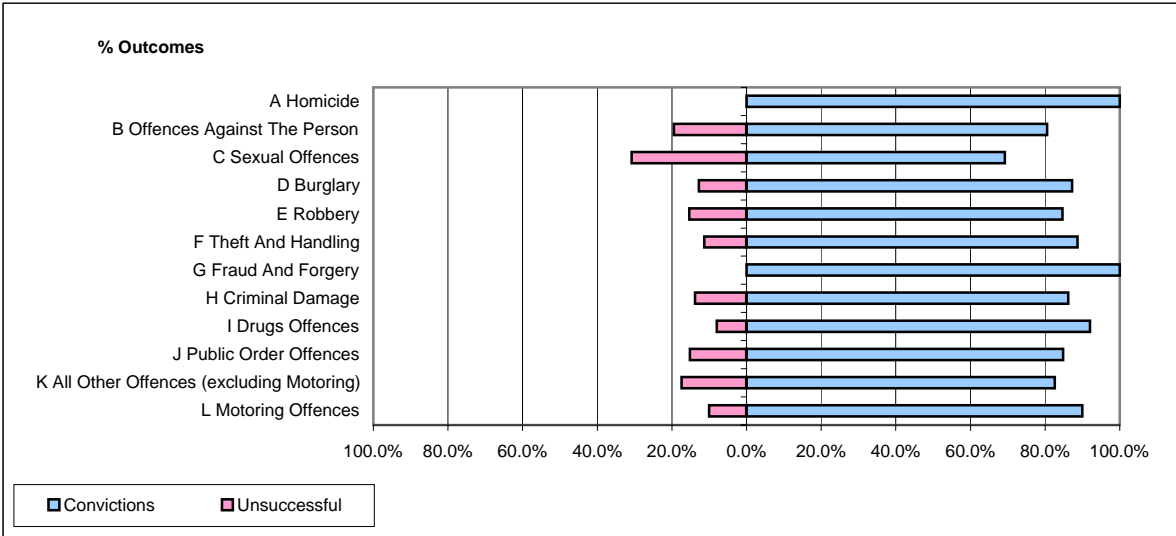


CPS OUTCOMES BY PRINCIPAL OFFENCE CATEGORY

May 2007

P22-Leicestershire



	Convictions		Unsuccessful	
	Number of Defendants	%	Number of Defendants	%
A Homicide	1	100.0%	0	0.0%
B Offences Against The Person	178	80.5%	43	19.5%
C Sexual Offences	9	69.2%	4	30.8%
D Burglary	34	87.2%	5	12.8%
E Robbery	11	84.6%	2	15.4%
F Theft And Handling	180	88.7%	23	11.3%
G Fraud And Forgery	18	100.0%	0	0.0%
H Criminal Damage	50	86.2%	8	13.8%
I Drugs Offences	58	92.1%	5	7.9%
J Public Order Offences	95	84.8%	17	15.2%
K All Other Offences (excluding Motoring)	57	82.6%	12	17.4%
L Motoring Offences	402	89.9%	45	10.1%
Admin Finalisations	0	0.0%	25	100.0%
TOTAL	1,093	85.3%	189	14.7%