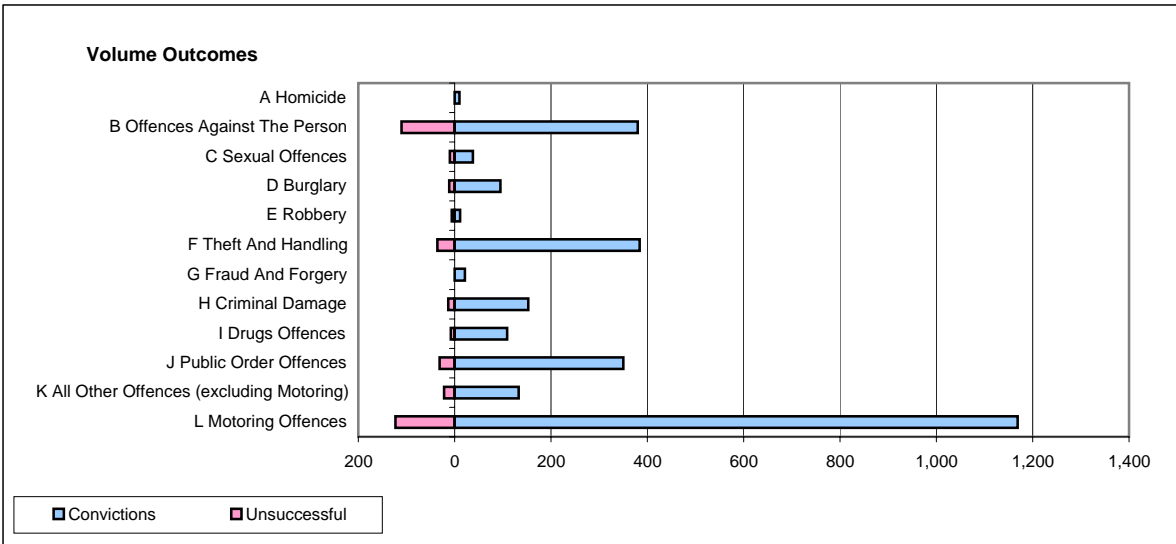
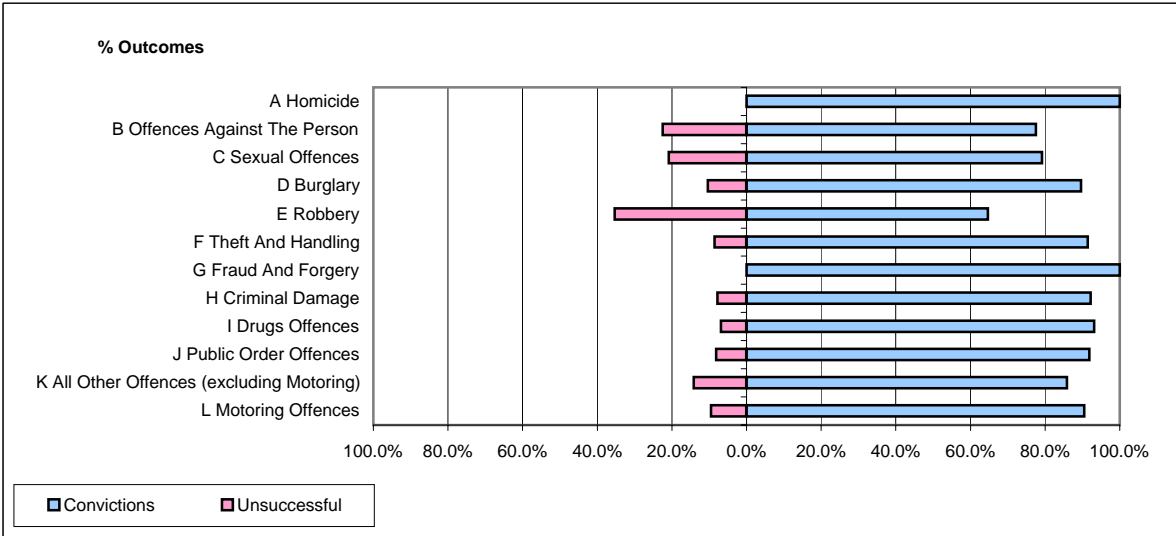


CPS OUTCOMES BY PRINCIPAL OFFENCE CATEGORY

May 2007

P21-Lancashire



	Convictions		Unsuccessful	
	Number of Defendants	%	Number of Defendants	%
A Homicide	10	100.0%	0	0.0%
B Offences Against The Person	380	77.6%	110	22.4%
C Sexual Offences	38	79.2%	10	20.8%
D Burglary	95	89.6%	11	10.4%
E Robbery	11	64.7%	6	35.3%
F Theft And Handling	384	91.4%	36	8.6%
G Fraud And Forgery	21	100.0%	0	0.0%
H Criminal Damage	153	92.2%	13	7.8%
I Drugs Offences	109	93.2%	8	6.8%
J Public Order Offences	350	91.9%	31	8.1%
K All Other Offences (excluding Motoring)	133	85.8%	22	14.2%
L Motoring Offences	1,169	90.5%	123	9.5%
Admin Finalisations	0	0.0%	55	100.0%
TOTAL	2,853	87.0%	425	13.0%