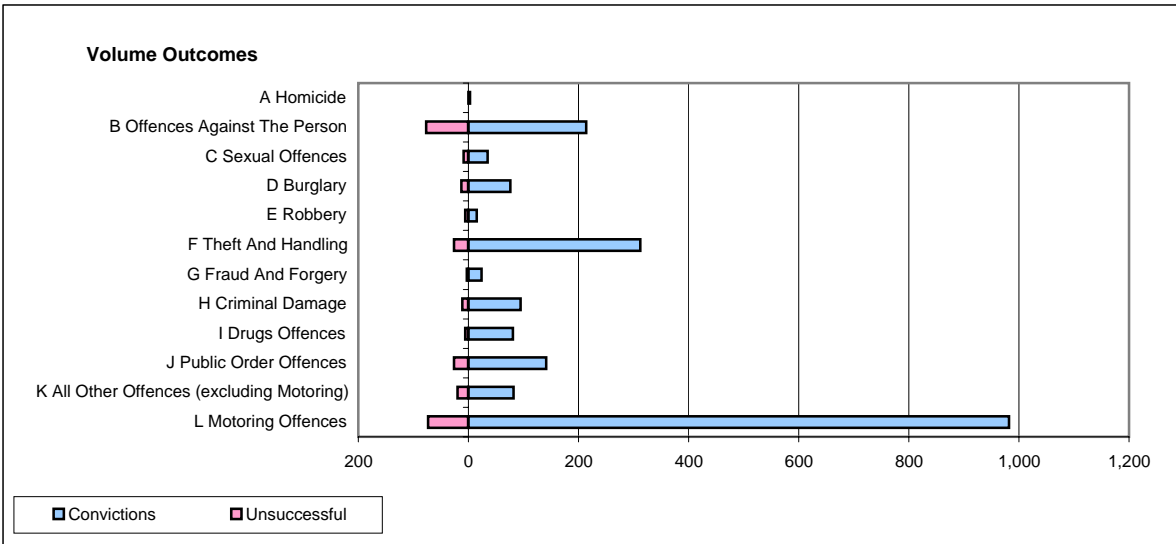
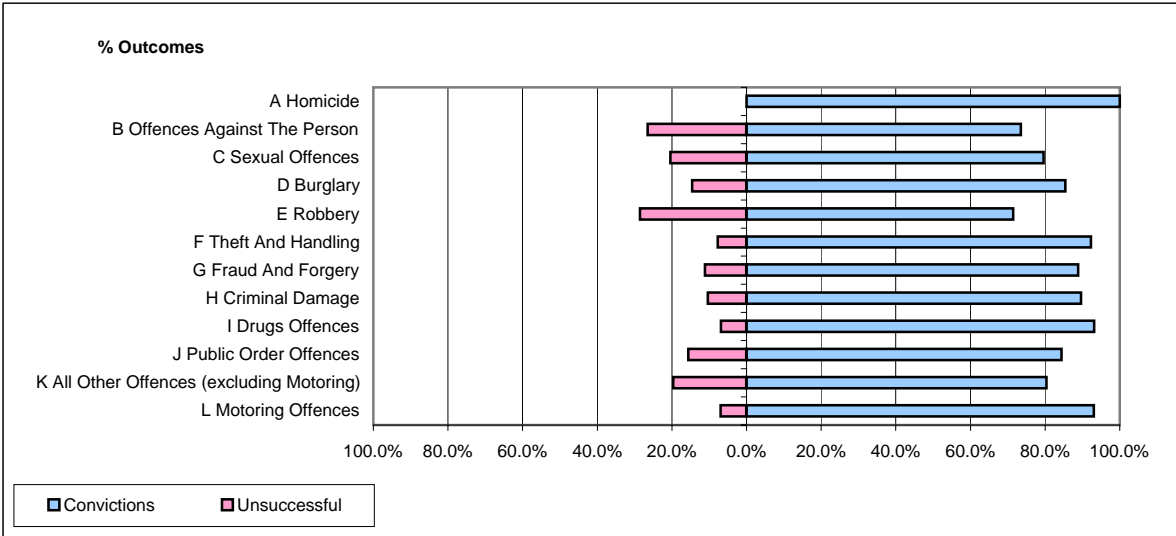


CPS OUTCOMES BY PRINCIPAL OFFENCE CATEGORY

May 2007

P20-Kent



	Convictions		Unsuccessful	
	Number of Defendants	%	Number of Defendants	%
A Homicide	3	100.0%	0	0.0%
B Offences Against The Person	214	73.5%	77	26.5%
C Sexual Offences	35	79.5%	9	20.5%
D Burglary	76	85.4%	13	14.6%
E Robbery	15	71.4%	6	28.6%
F Theft And Handling	312	92.3%	26	7.7%
G Fraud And Forgery	24	88.9%	3	11.1%
H Criminal Damage	95	89.6%	11	10.4%
I Drugs Offences	81	93.1%	6	6.9%
J Public Order Offences	141	84.4%	26	15.6%
K All Other Offences (excluding Motoring)	82	80.4%	20	19.6%
L Motoring Offences	982	93.1%	73	6.9%
Admin Finalisations	0	0.0%	32	100.0%
TOTAL	2,060	87.2%	302	12.8%