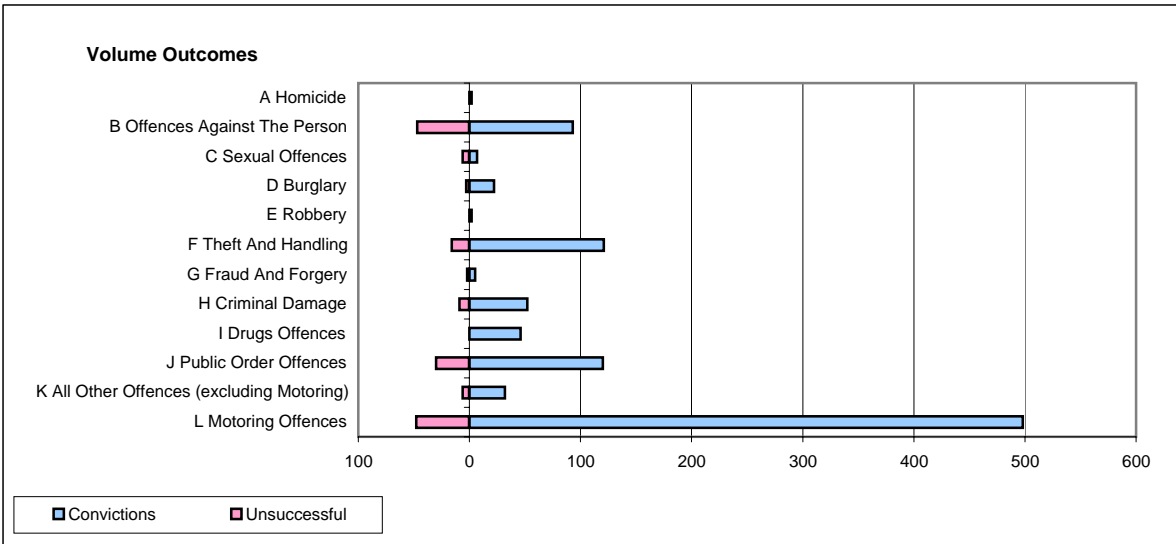
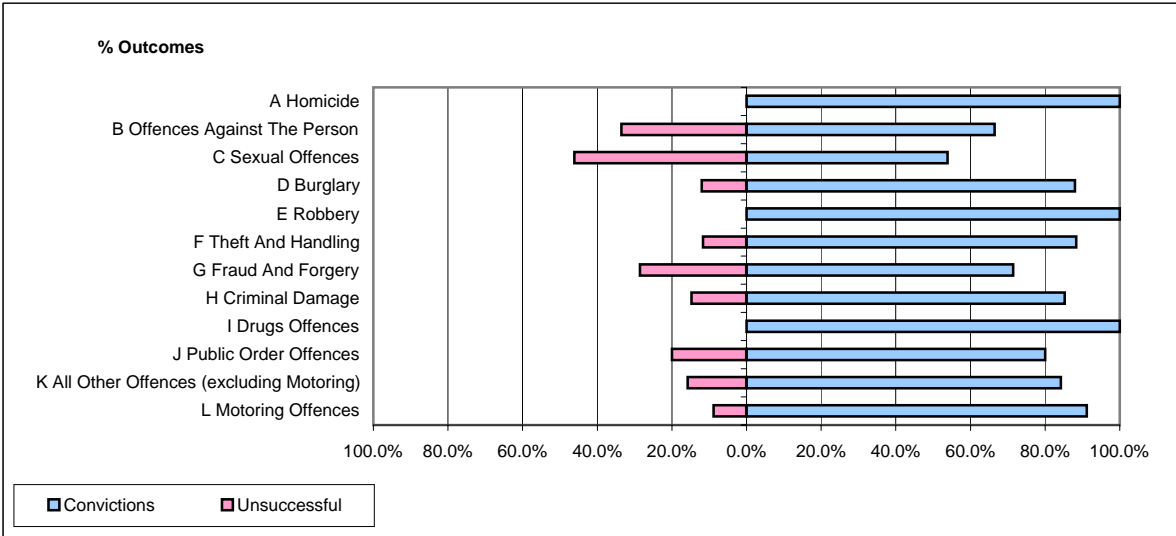


CPS OUTCOMES BY PRINCIPAL OFFENCE CATEGORY

May 2007

P16-Gwent



	Convictions		Unsuccessful	
	Number of Defendants	%	Number of Defendants	%
A Homicide	2	100.0%	0	0.0%
B Offences Against The Person	93	66.4%	47	33.6%
C Sexual Offences	7	53.8%	6	46.2%
D Burglary	22	88.0%	3	12.0%
E Robbery	2	100.0%	0	0.0%
F Theft And Handling	121	88.3%	16	11.7%
G Fraud And Forgery	5	71.4%	2	28.6%
H Criminal Damage	52	85.2%	9	14.8%
I Drugs Offences	46	100.0%	0	0.0%
J Public Order Offences	120	80.0%	30	20.0%
K All Other Offences (excluding Motoring)	32	84.2%	6	15.8%
L Motoring Offences	498	91.2%	48	8.8%
Admin Finalisations	0	0.0%	14	100.0%
TOTAL	1,000	84.7%	181	15.3%