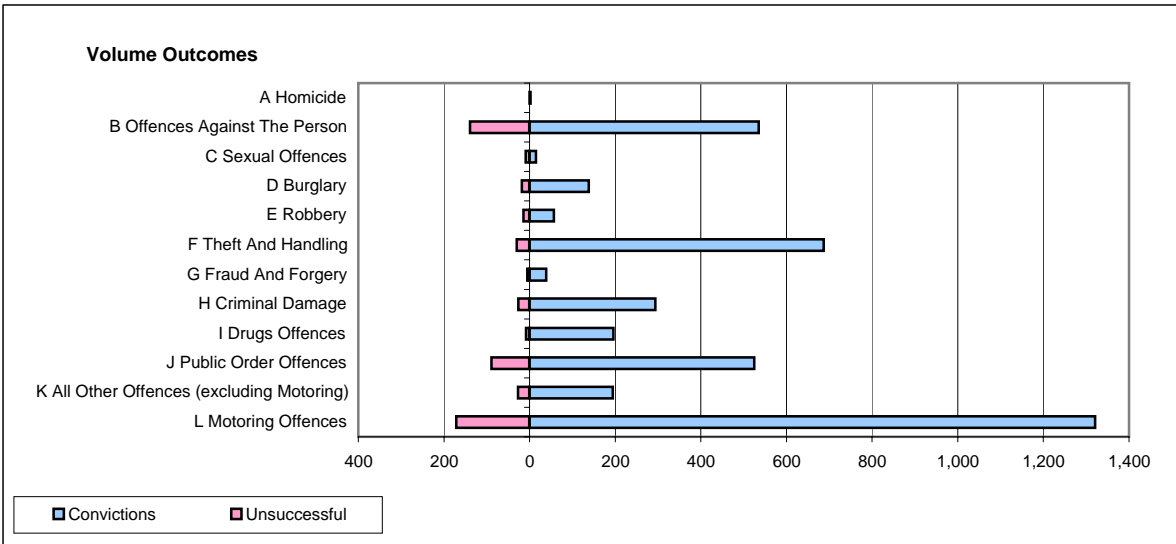
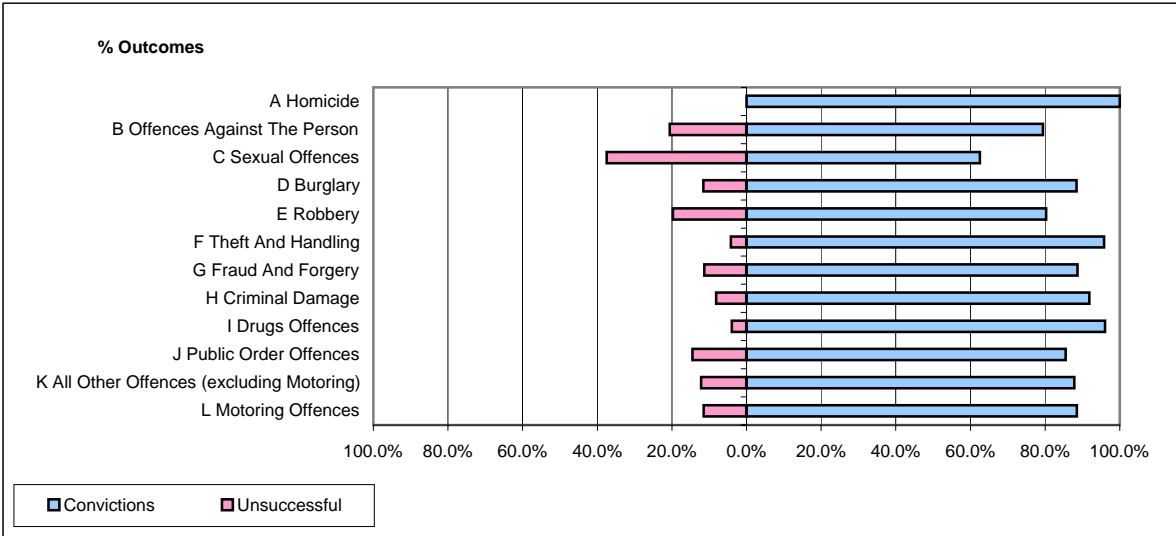


CPS OUTCOMES BY PRINCIPAL OFFENCE CATEGORY

May 2007

P15-GreaterManchester



	Convictions		Unsuccessful	
	Number of Defendants	%	Number of Defendants	%
A Homicide	2	100.0%	0	0.0%
B Offences Against The Person	535	79.4%	139	20.6%
C Sexual Offences	15	62.5%	9	37.5%
D Burglary	138	88.5%	18	11.5%
E Robbery	57	80.3%	14	19.7%
F Theft And Handling	687	95.8%	30	4.2%
G Fraud And Forgery	39	88.6%	5	11.4%
H Criminal Damage	294	91.9%	26	8.1%
I Drugs Offences	196	96.1%	8	3.9%
J Public Order Offences	525	85.5%	89	14.5%
K All Other Offences (excluding Motoring)	194	87.8%	27	12.2%
L Motoring Offences	1,321	88.5%	171	11.5%
Admin Finalisations	0	0.0%	90	100.0%
TOTAL	4,003	86.5%	626	13.5%