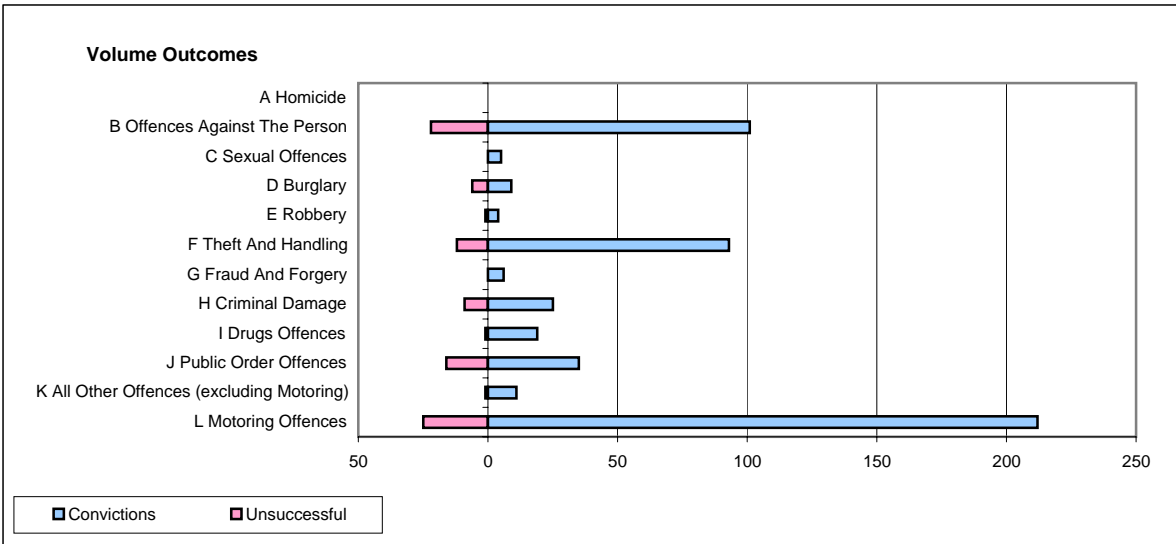
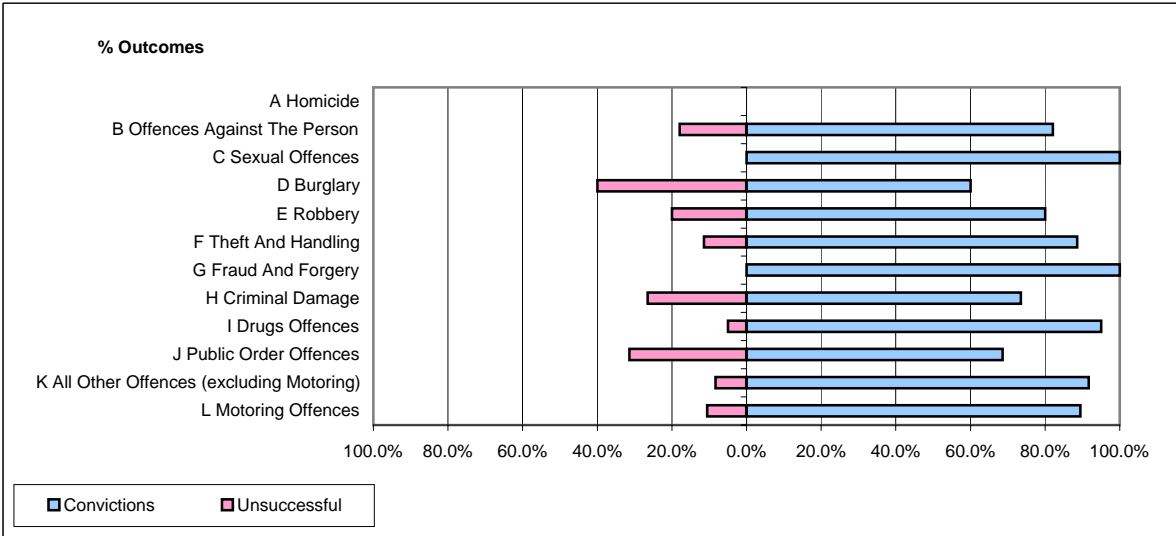


CPS OUTCOMES BY PRINCIPAL OFFENCE CATEGORY

May 2007

P14-Gloucestershire



	Convictions		Unsuccessful	
	Number of Defendants	%	Number of Defendants	%
A Homicide	0	#DIV/0!	0	#DIV/0!
B Offences Against The Person	101	82.1%	22	17.9%
C Sexual Offences	5	100.0%	0	0.0%
D Burglary	9	60.0%	6	40.0%
E Robbery	4	80.0%	1	20.0%
F Theft And Handling	93	88.6%	12	11.4%
G Fraud And Forgery	6	100.0%	0	0.0%
H Criminal Damage	25	73.5%	9	26.5%
I Drugs Offences	19	95.0%	1	5.0%
J Public Order Offences	35	68.6%	16	31.4%
K All Other Offences (excluding Motoring)	11	91.7%	1	8.3%
L Motoring Offences	212	89.5%	25	10.5%
Admin Finalisations	0	0.0%	10	100.0%
TOTAL	520	83.5%	103	16.5%