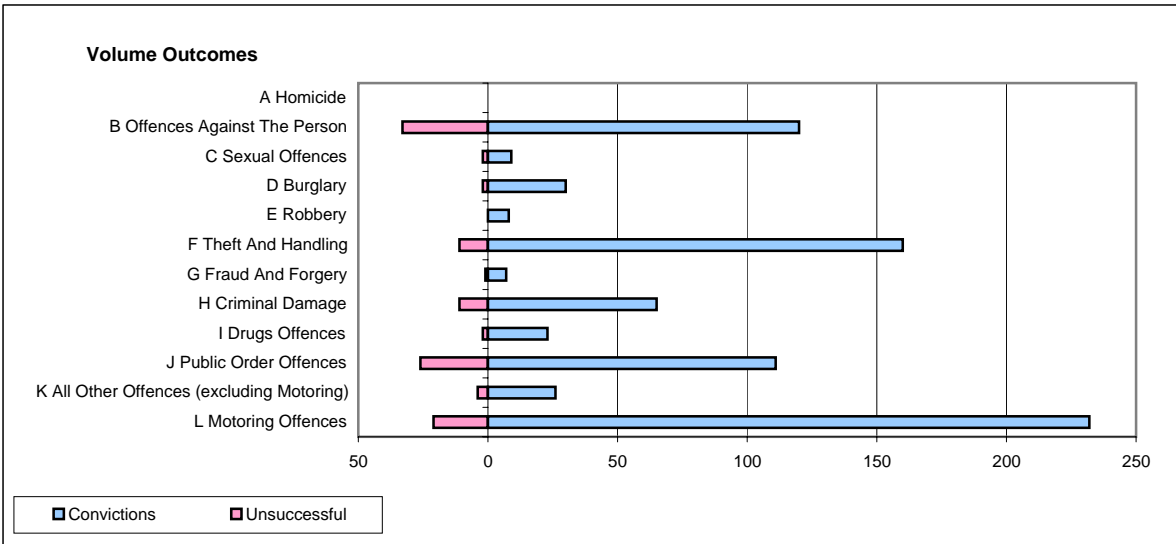
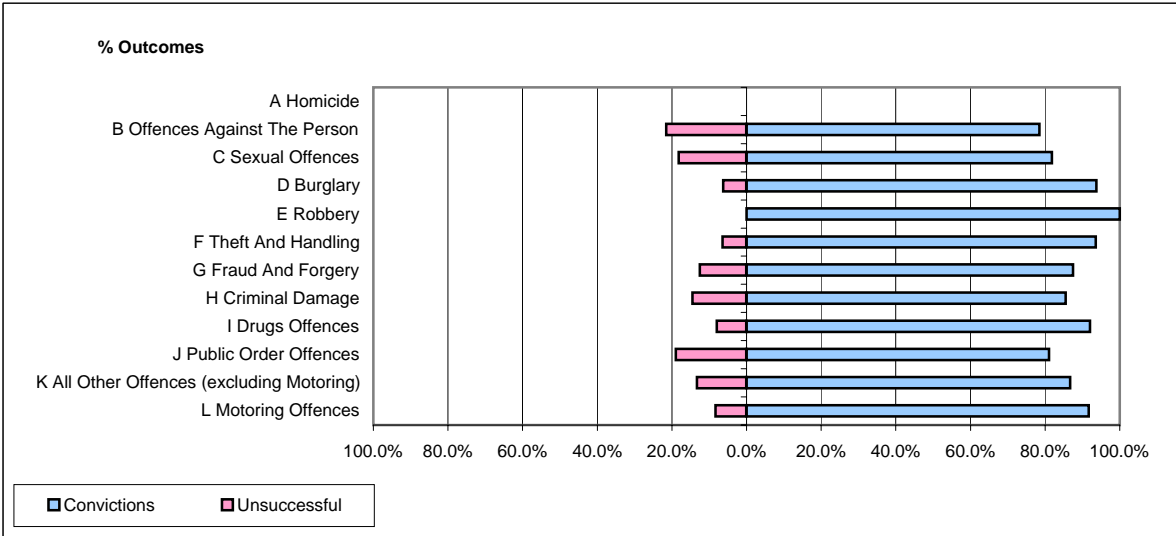


CPS OUTCOMES BY PRINCIPAL OFFENCE CATEGORY

May 2007

P11-Durham



	Convictions		Unsuccessful	
	Number of Defendants	%	Number of Defendants	%
A Homicide	0	#DIV/0!	0	#DIV/0!
B Offences Against The Person	120	78.4%	33	21.6%
C Sexual Offences	9	81.8%	2	18.2%
D Burglary	30	93.8%	2	6.3%
E Robbery	8	100.0%	0	0.0%
F Theft And Handling	160	93.6%	11	6.4%
G Fraud And Forgery	7	87.5%	1	12.5%
H Criminal Damage	65	85.5%	11	14.5%
I Drugs Offences	23	92.0%	2	8.0%
J Public Order Offences	111	81.0%	26	19.0%
K All Other Offences (excluding Motoring)	26	86.7%	4	13.3%
L Motoring Offences	232	91.7%	21	8.3%
Admin Finalisations	0	0.0%	11	100.0%
TOTAL	791	86.4%	124	13.6%