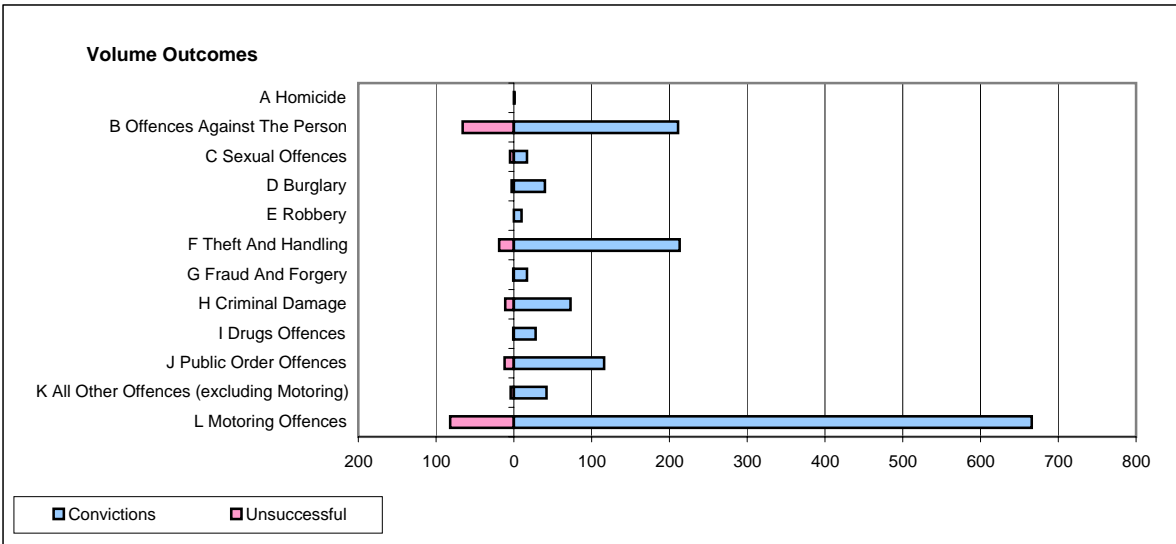
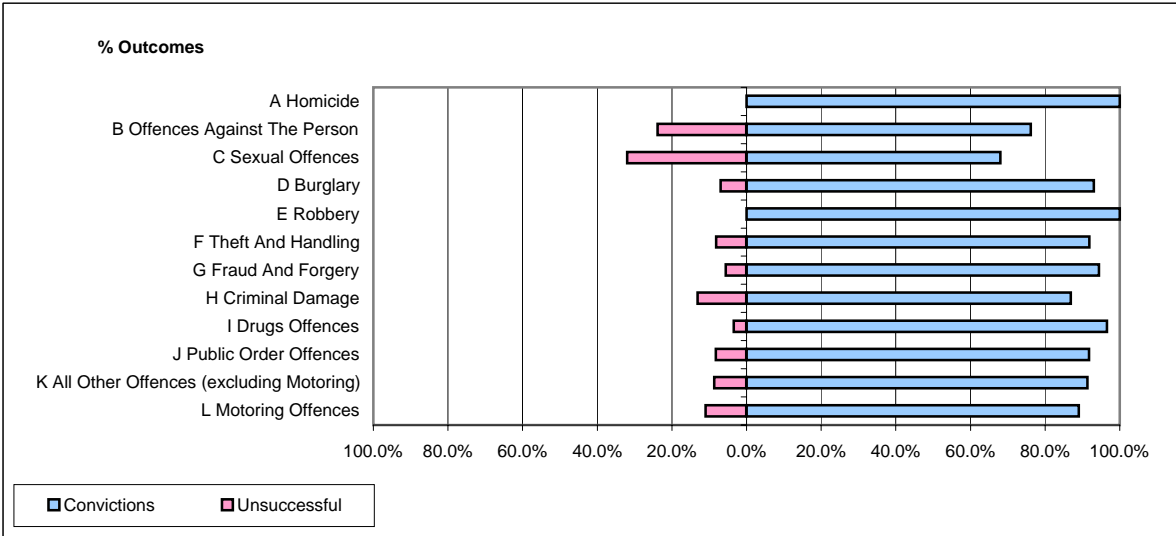


CPS OUTCOMES BY PRINCIPAL OFFENCE CATEGORY

May 2007

P04-Cheshire



	Convictions		Unsuccessful	
	Number of Defendants	%	Number of Defendants	%
A Homicide	1	100.0%	0	0.0%
B Offences Against The Person	211	76.2%	66	23.8%
C Sexual Offences	17	68.0%	5	32.0%
D Burglary	40	93.0%	3	7.0%
E Robbery	10	100.0%	0	0.0%
F Theft And Handling	213	91.8%	19	8.2%
G Fraud And Forgery	17	94.4%	1	5.6%
H Criminal Damage	73	86.9%	11	13.1%
I Drugs Offences	28	96.6%	1	3.4%
J Public Order Offences	116	91.8%	12	8.2%
K All Other Offences (excluding Motoring)	42	91.3%	4	8.7%
L Motoring Offences	666	89.0%	82	11.0%
Admin Finalisations	0	0.0%	29	100.0%
TOTAL	1,434	86.0%	233	14.0%