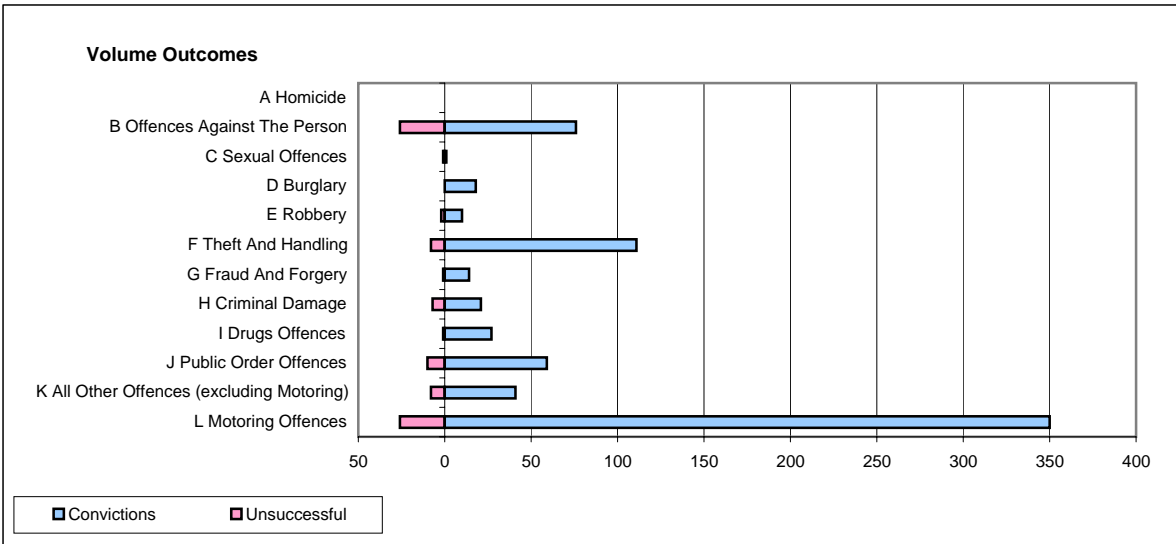
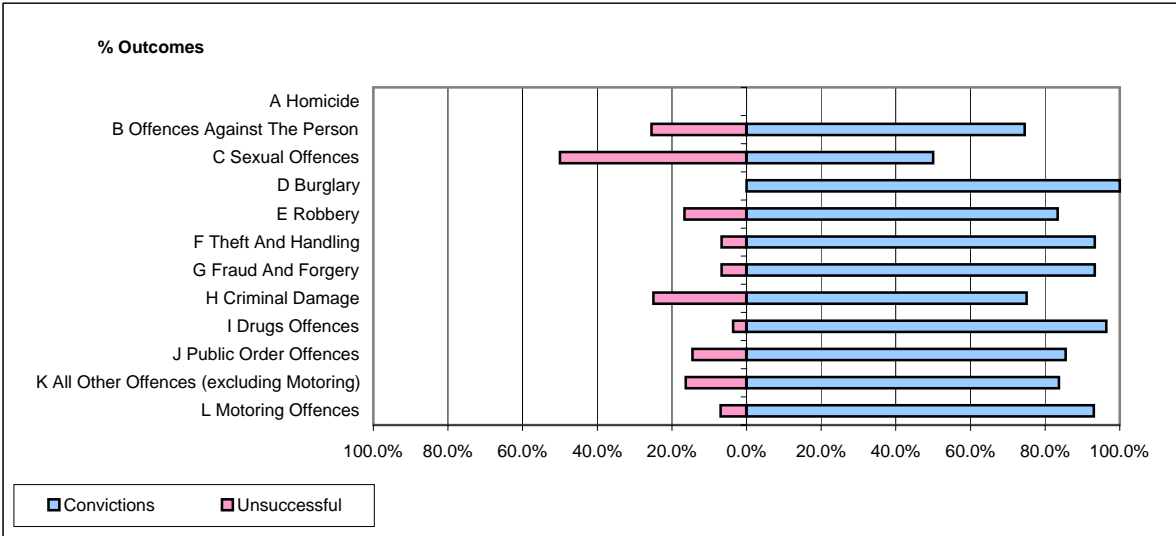


CPS OUTCOMES BY PRINCIPAL OFFENCE CATEGORY

May 2007

P02-Bedfordshire



	Convictions		Unsuccessful	
	Number of Defendants	%	Number of Defendants	%
A Homicide	0	#DIV/0!	0	#DIV/0!
B Offences Against The Person	76	74.5%	26	25.5%
C Sexual Offences	1	50.0%	1	50.0%
D Burglary	18	100.0%	0	0.0%
E Robbery	10	83.3%	2	16.7%
F Theft And Handling	111	93.3%	8	6.7%
G Fraud And Forgery	14	93.3%	1	6.7%
H Criminal Damage	21	75.0%	7	25.0%
I Drugs Offences	27	96.4%	1	3.6%
J Public Order Offences	59	85.5%	10	14.5%
K All Other Offences (excluding Motoring)	41	83.7%	8	16.3%
L Motoring Offences	350	93.1%	26	6.9%
Admin Finalisations	0	0.0%	18	100.0%
TOTAL	728	87.1%	108	12.9%