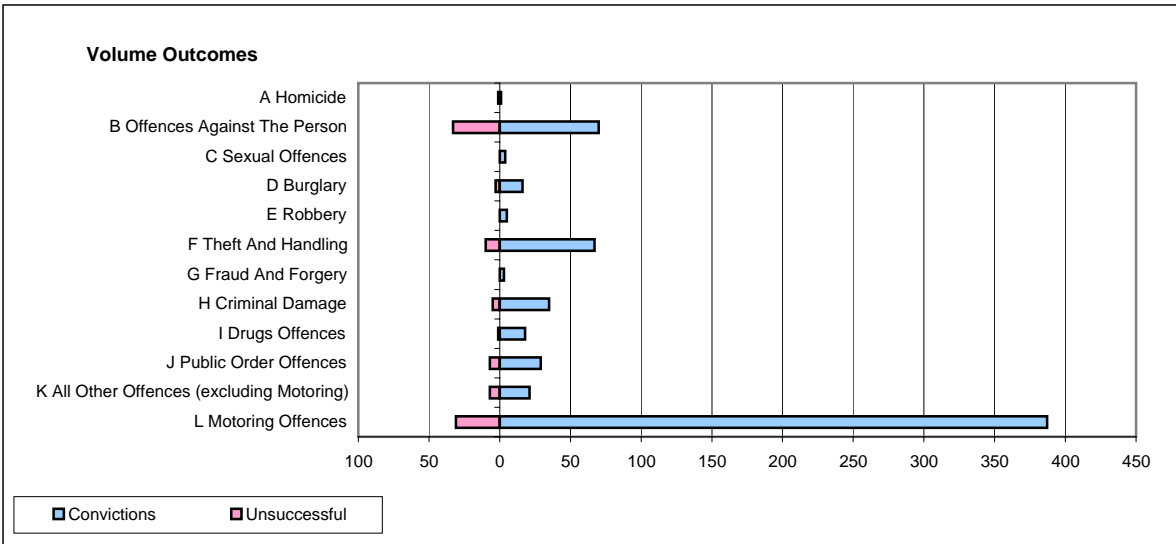
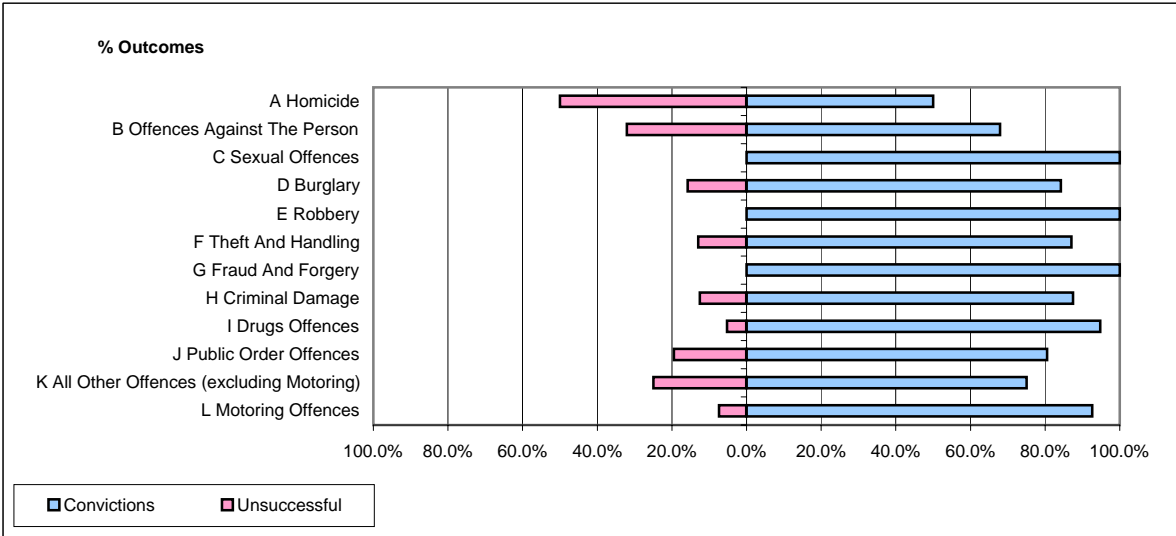


CPS OUTCOMES BY PRINCIPAL OFFENCE CATEGORY

April 2007

P43-Wiltshire



	Convictions		Unsuccessful	
	Number of Defendants	%	Number of Defendants	%
A Homicide	1	50.0%	1	50.0%
B Offences Against The Person	70	68.0%	33	32.0%
C Sexual Offences	4	100.0%	0	0.0%
D Burglary	16	84.2%	3	15.8%
E Robbery	5	100.0%	0	0.0%
F Theft And Handling	67	87.0%	10	13.0%
G Fraud And Forgery	3	100.0%	0	0.0%
H Criminal Damage	35	87.5%	5	12.5%
I Drugs Offences	18	94.7%	1	5.3%
J Public Order Offences	29	80.6%	7	19.4%
K All Other Offences (excluding Motoring)	21	75.0%	7	25.0%
L Motoring Offences	387	92.6%	31	7.4%
Admin Finalisations	0	0.0%	12	100.0%
TOTAL	656	85.6%	110	14.4%