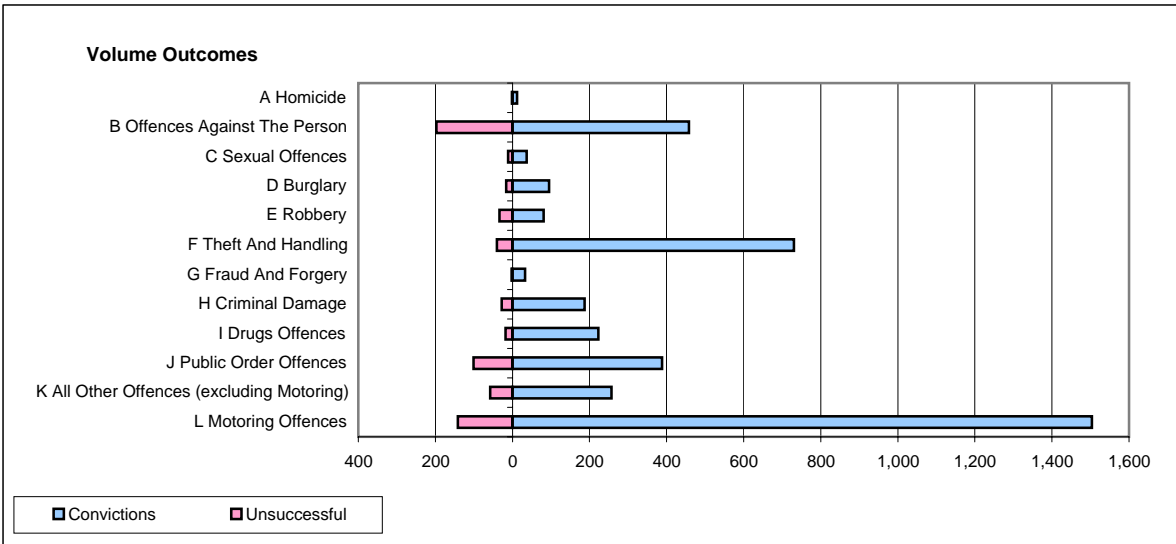
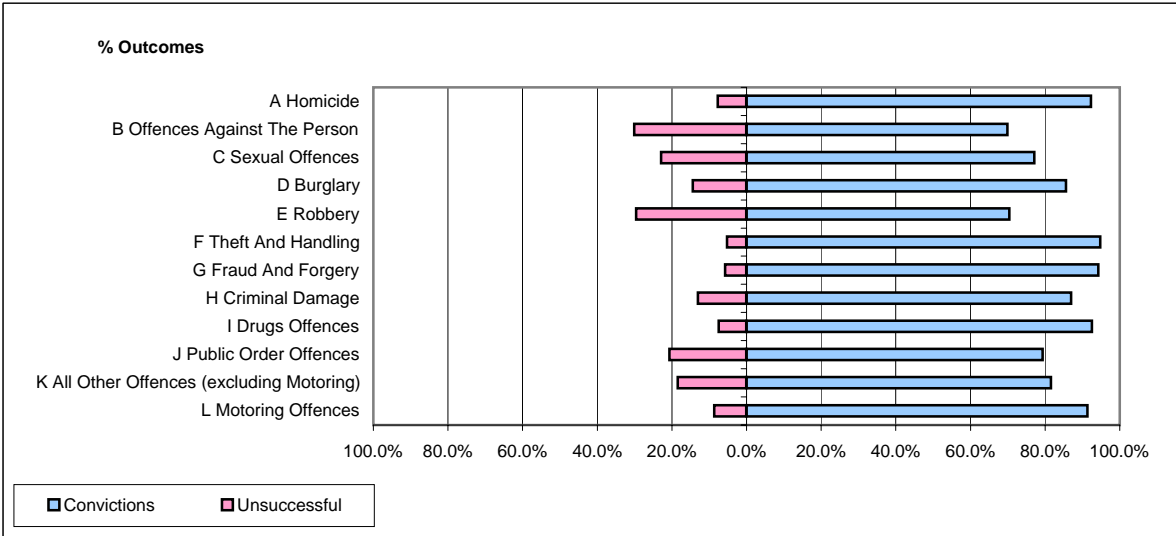


CPS OUTCOMES BY PRINCIPAL OFFENCE CATEGORY

April 2007

P41-WestMidlands



	Convictions		Unsuccessful	
	Number of Defendants	%	Number of Defendants	%
A Homicide	12	92.3%	1	7.7%
B Offences Against The Person	458	69.9%	197	30.1%
C Sexual Offences	37	77.1%	11	22.9%
D Burglary	95	85.6%	16	14.4%
E Robbery	81	70.4%	34	29.6%
F Theft And Handling	730	94.8%	40	5.2%
G Fraud And Forgery	33	94.3%	2	5.7%
H Criminal Damage	187	87.0%	28	13.0%
I Drugs Offences	223	92.5%	18	7.5%
J Public Order Offences	388	79.3%	101	20.7%
K All Other Offences (excluding Motoring)	257	81.6%	58	18.4%
L Motoring Offences	1,504	91.4%	142	8.6%
Admin Finalisations	0	0.0%	66	100.0%
TOTAL	4,005	84.9%	714	15.1%