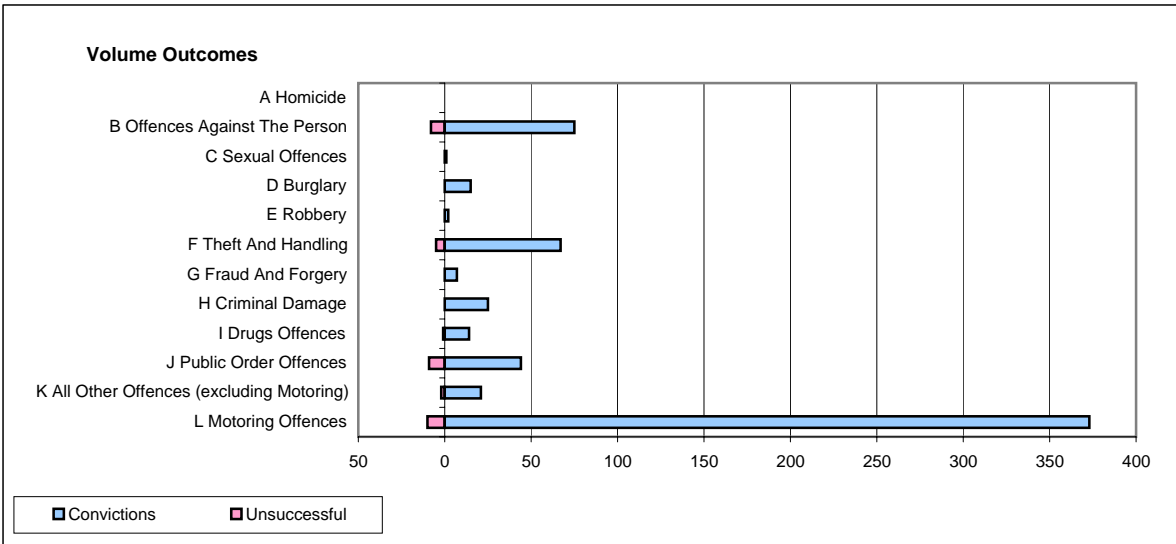
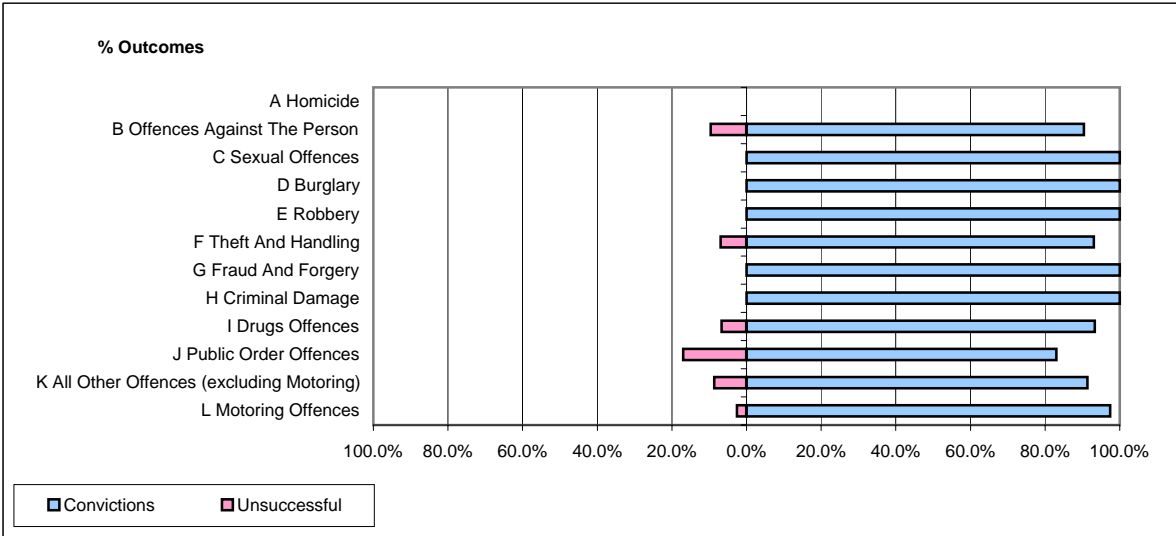


**CPS OUTCOMES BY PRINCIPAL OFFENCE CATEGORY**

**April 2007**

**P39-Warwickshire**



	Convictions		Unsuccessful	
	Number of Defendants	%	Number of Defendants	%
<b>A Homicide</b>	<b>0</b>	<b>#DIV/0!</b>	<b>0</b>	<b>#DIV/0!</b>
<b>B Offences Against The Person</b>	<b>75</b>	<b>90.4%</b>	<b>8</b>	<b>9.6%</b>
<b>C Sexual Offences</b>	<b>1</b>	<b>100.0%</b>	<b>0</b>	<b>0.0%</b>
<b>D Burglary</b>	<b>15</b>	<b>100.0%</b>	<b>0</b>	<b>0.0%</b>
<b>E Robbery</b>	<b>2</b>	<b>100.0%</b>	<b>0</b>	<b>0.0%</b>
<b>F Theft And Handling</b>	<b>67</b>	<b>93.1%</b>	<b>5</b>	<b>6.9%</b>
<b>G Fraud And Forgery</b>	<b>7</b>	<b>100.0%</b>	<b>0</b>	<b>0.0%</b>
<b>H Criminal Damage</b>	<b>25</b>	<b>100.0%</b>	<b>0</b>	<b>0.0%</b>
<b>I Drugs Offences</b>	<b>14</b>	<b>93.3%</b>	<b>1</b>	<b>6.7%</b>
<b>J Public Order Offences</b>	<b>44</b>	<b>83.0%</b>	<b>9</b>	<b>17.0%</b>
<b>K All Other Offences (excluding Motoring)</b>	<b>21</b>	<b>91.3%</b>	<b>2</b>	<b>8.7%</b>
<b>L Motoring Offences</b>	<b>373</b>	<b>97.4%</b>	<b>10</b>	<b>2.6%</b>
<b>Admin Finalisations</b>	<b>0</b>	<b>0.0%</b>	<b>4</b>	<b>100.0%</b>
<b>TOTAL</b>	<b>644</b>	<b>94.3%</b>	<b>39</b>	<b>5.7%</b>