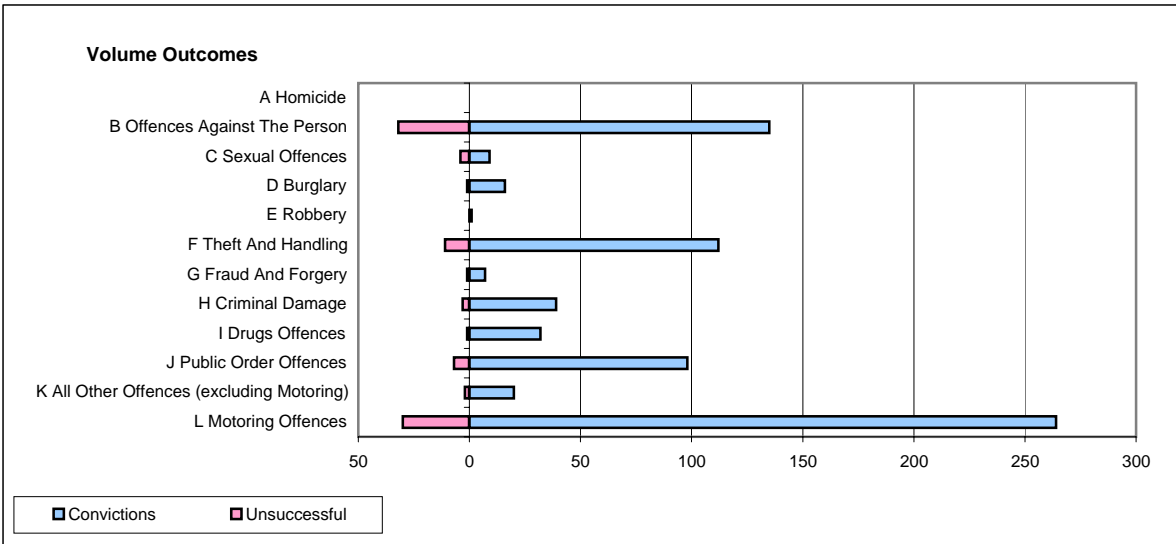
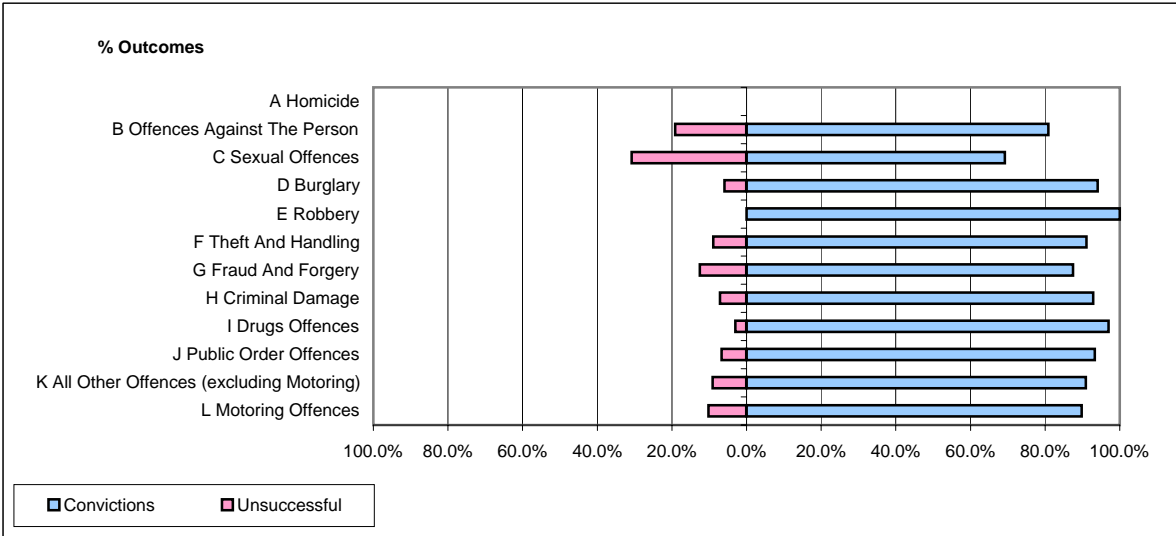


CPS OUTCOMES BY PRINCIPAL OFFENCE CATEGORY

April 2007

P35-Suffolk



	Convictions		Unsuccessful	
	Number of Defendants	%	Number of Defendants	%
A Homicide	0	#DIV/0!	0	#DIV/0!
B Offences Against The Person	135	80.8%	32	19.2%
C Sexual Offences	9	69.2%	4	30.8%
D Burglary	16	94.1%	1	5.9%
E Robbery	1	100.0%	0	0.0%
F Theft And Handling	112	91.1%	11	8.9%
G Fraud And Forgery	7	87.5%	1	12.5%
H Criminal Damage	39	92.9%	3	7.1%
I Drugs Offences	32	97.0%	1	3.0%
J Public Order Offences	98	93.3%	7	6.7%
K All Other Offences (excluding Motoring)	20	90.9%	2	9.1%
L Motoring Offences	264	89.8%	30	10.2%
Admin Finalisations	0	0.0%	14	100.0%
TOTAL	733	87.4%	106	12.6%