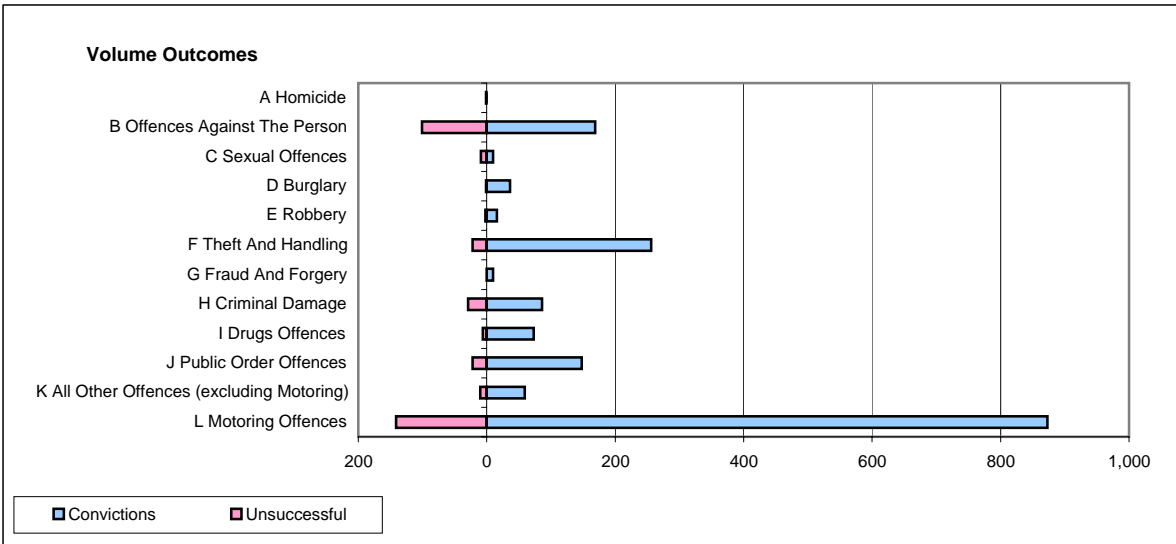
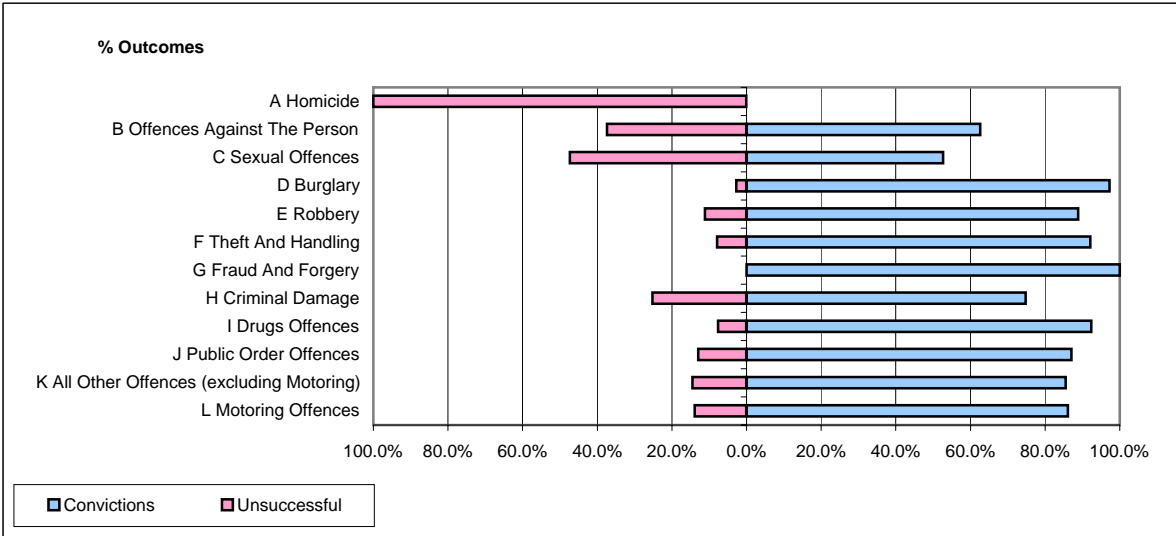


**CPS OUTCOMES BY PRINCIPAL OFFENCE CATEGORY**

**April 2007**

**P32-SouthWales**



	Convictions		Unsuccessful	
	Number of Defendants	%	Number of Defendants	%
<b>A Homicide</b>	<b>0</b>	<b>0.0%</b>	<b>1</b>	<b>100.0%</b>
<b>B Offences Against The Person</b>	<b>169</b>	<b>62.6%</b>	<b>101</b>	<b>37.4%</b>
<b>C Sexual Offences</b>	<b>10</b>	<b>52.6%</b>	<b>9</b>	<b>47.4%</b>
<b>D Burglary</b>	<b>36</b>	<b>97.3%</b>	<b>1</b>	<b>2.7%</b>
<b>E Robbery</b>	<b>16</b>	<b>88.9%</b>	<b>2</b>	<b>11.1%</b>
<b>F Theft And Handling</b>	<b>256</b>	<b>92.1%</b>	<b>22</b>	<b>7.9%</b>
<b>G Fraud And Forgery</b>	<b>10</b>	<b>100.0%</b>	<b>0</b>	<b>0.0%</b>
<b>H Criminal Damage</b>	<b>86</b>	<b>74.8%</b>	<b>29</b>	<b>25.2%</b>
<b>I Drugs Offences</b>	<b>73</b>	<b>92.4%</b>	<b>6</b>	<b>7.6%</b>
<b>J Public Order Offences</b>	<b>148</b>	<b>87.1%</b>	<b>22</b>	<b>12.9%</b>
<b>K All Other Offences (excluding Motoring)</b>	<b>59</b>	<b>85.5%</b>	<b>10</b>	<b>14.5%</b>
<b>L Motoring Offences</b>	<b>873</b>	<b>86.1%</b>	<b>141</b>	<b>13.9%</b>
<b>Admin Finalisations</b>	<b>0</b>	<b>0.0%</b>	<b>90</b>	<b>100.0%</b>
<b>TOTAL</b>	<b>1,736</b>	<b>80.0%</b>	<b>434</b>	<b>20.0%</b>