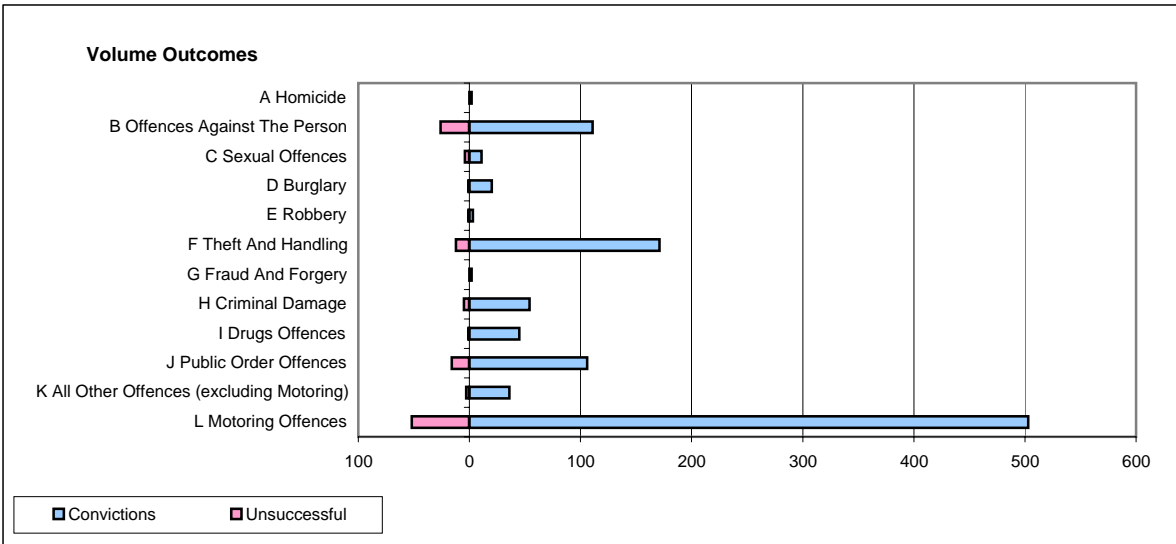
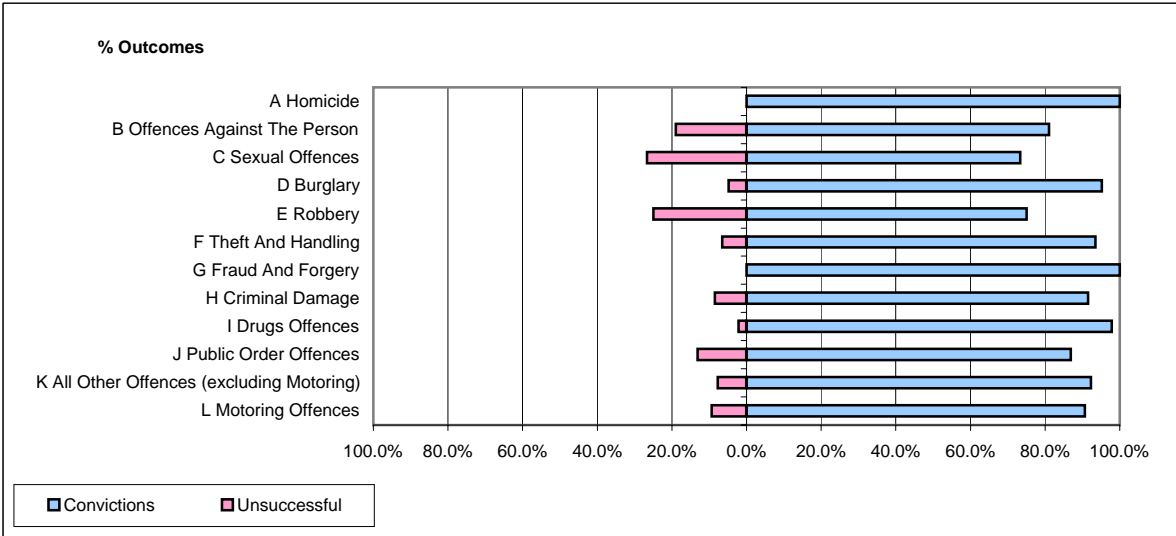


CPS OUTCOMES BY PRINCIPAL OFFENCE CATEGORY

April 2007

P26-Norfolk



	Convictions		Unsuccessful	
	Number of Defendants	%	Number of Defendants	%
A Homicide	2	100.0%	0	0.0%
B Offences Against The Person	111	81.0%	26	19.0%
C Sexual Offences	11	73.3%	4	26.7%
D Burglary	20	95.2%	1	4.8%
E Robbery	3	75.0%	1	25.0%
F Theft And Handling	171	93.4%	12	6.6%
G Fraud And Forgery	2	100.0%	0	0.0%
H Criminal Damage	54	91.5%	5	8.5%
I Drugs Offences	45	97.8%	1	2.2%
J Public Order Offences	106	86.9%	16	13.1%
K All Other Offences (excluding Motoring)	36	92.3%	3	7.7%
L Motoring Offences	503	90.6%	52	9.4%
Admin Finalisations	0	0.0%	27	100.0%
TOTAL	1,064	87.8%	148	12.2%