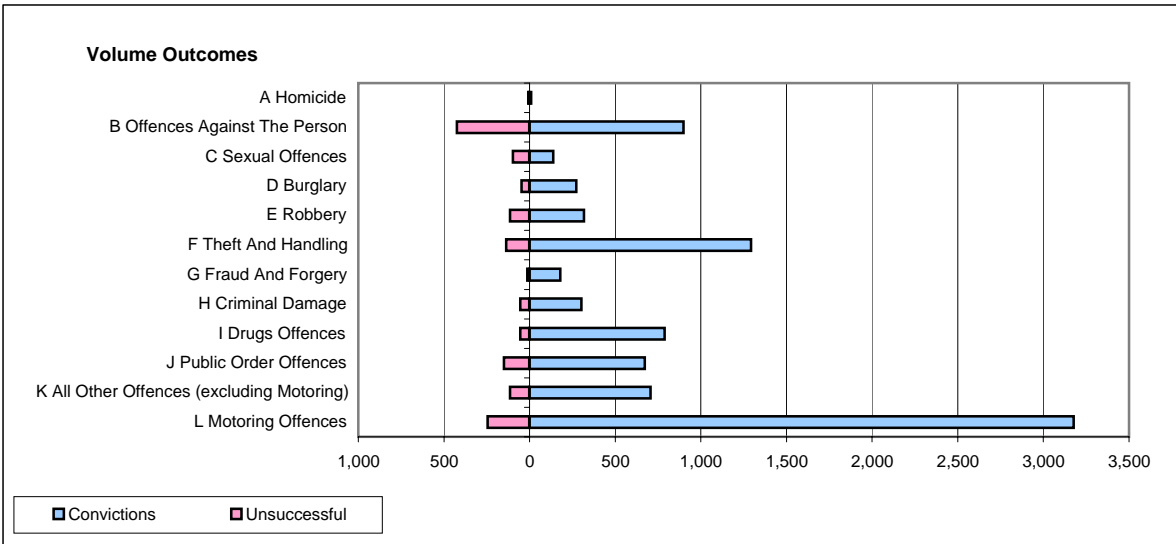
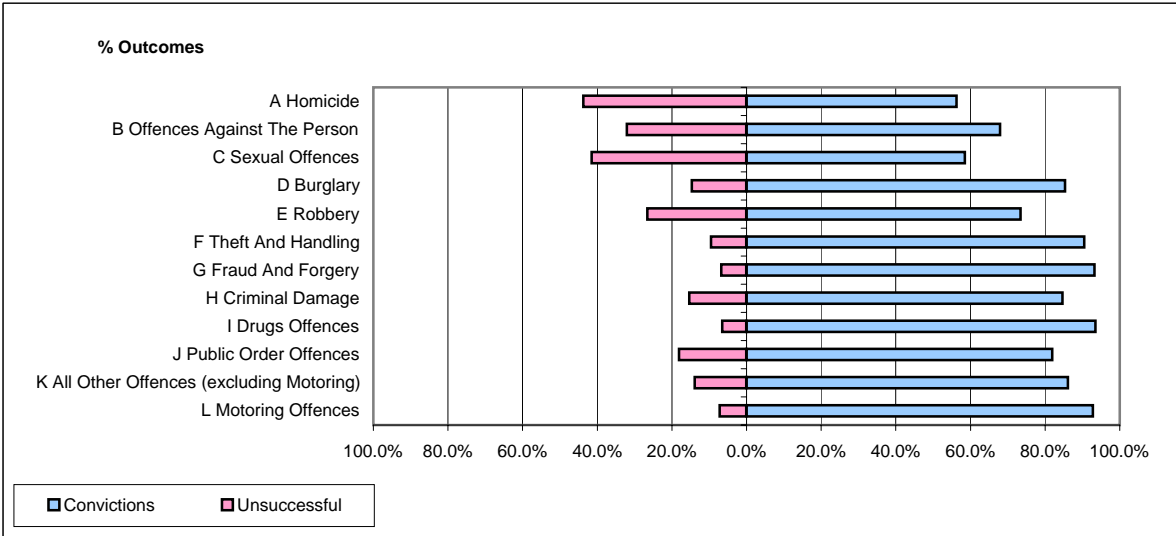


**CPS OUTCOMES BY PRINCIPAL OFFENCE CATEGORY**

**April 2007**

**P25-Metropolitan&City**



	Convictions		Unsuccessful	
	Number of Defendants	%	Number of Defendants	%
<b>A Homicide</b>	<b>9</b>	<b>56.3%</b>	<b>7</b>	<b>43.8%</b>
<b>B Offences Against The Person</b>	<b>898</b>	<b>67.9%</b>	<b>424</b>	<b>32.1%</b>
<b>C Sexual Offences</b>	<b>138</b>	<b>58.5%</b>	<b>98</b>	<b>41.5%</b>
<b>D Burglary</b>	<b>273</b>	<b>85.3%</b>	<b>47</b>	<b>14.7%</b>
<b>E Robbery</b>	<b>318</b>	<b>73.4%</b>	<b>115</b>	<b>26.6%</b>
<b>F Theft And Handling</b>	<b>1,293</b>	<b>90.5%</b>	<b>136</b>	<b>9.5%</b>
<b>G Fraud And Forgery</b>	<b>179</b>	<b>93.2%</b>	<b>13</b>	<b>6.8%</b>
<b>H Criminal Damage</b>	<b>303</b>	<b>84.6%</b>	<b>55</b>	<b>15.4%</b>
<b>I Drugs Offences</b>	<b>788</b>	<b>93.5%</b>	<b>55</b>	<b>6.5%</b>
<b>J Public Order Offences</b>	<b>673</b>	<b>81.9%</b>	<b>149</b>	<b>18.1%</b>
<b>K All Other Offences (excluding Motoring)</b>	<b>706</b>	<b>86.1%</b>	<b>114</b>	<b>13.9%</b>
<b>L Motoring Offences</b>	<b>3,176</b>	<b>92.8%</b>	<b>245</b>	<b>7.2%</b>
<b>Admin Finalisations</b>	<b>0</b>	<b>0.0%</b>	<b>377</b>	<b>100.0%</b>
<b>TOTAL</b>	<b>8,754</b>	<b>82.7%</b>	<b>1,835</b>	<b>17.3%</b>