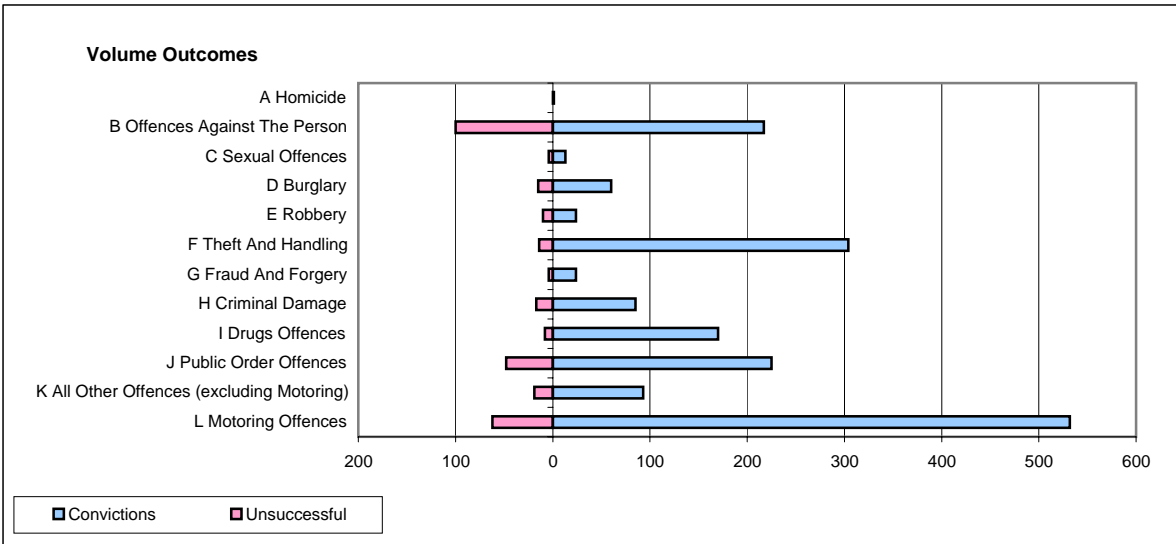
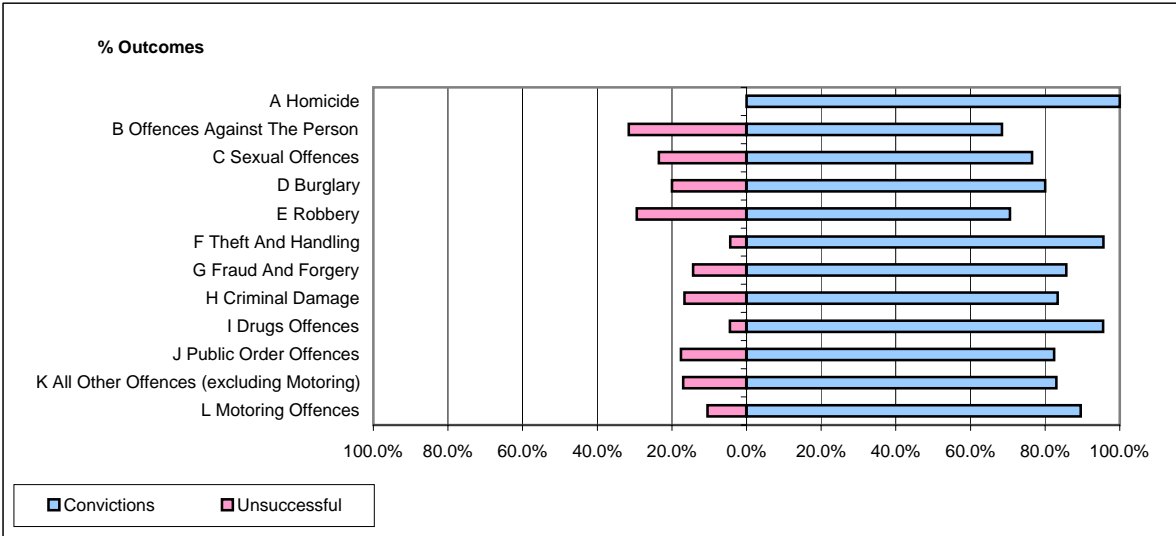


CPS OUTCOMES BY PRINCIPAL OFFENCE CATEGORY

April 2007

P24-Merseyside



	Convictions		Unsuccessful	
	Number of Defendants	%	Number of Defendants	%
A Homicide	1	100.0%	0	0.0%
B Offences Against The Person	217	68.5%	100	31.5%
C Sexual Offences	13	76.5%	4	23.5%
D Burglary	60	80.0%	15	20.0%
E Robbery	24	70.6%	10	29.4%
F Theft And Handling	304	95.6%	14	4.4%
G Fraud And Forgery	24	85.7%	4	14.3%
H Criminal Damage	85	83.3%	17	16.7%
I Drugs Offences	170	95.5%	8	4.5%
J Public Order Offences	225	82.4%	48	17.6%
K All Other Offences (excluding Motoring)	93	83.0%	19	17.0%
L Motoring Offences	532	89.6%	62	10.4%
Admin Finalisations	0	0.0%	32	100.0%
TOTAL	1,748	84.0%	333	16.0%