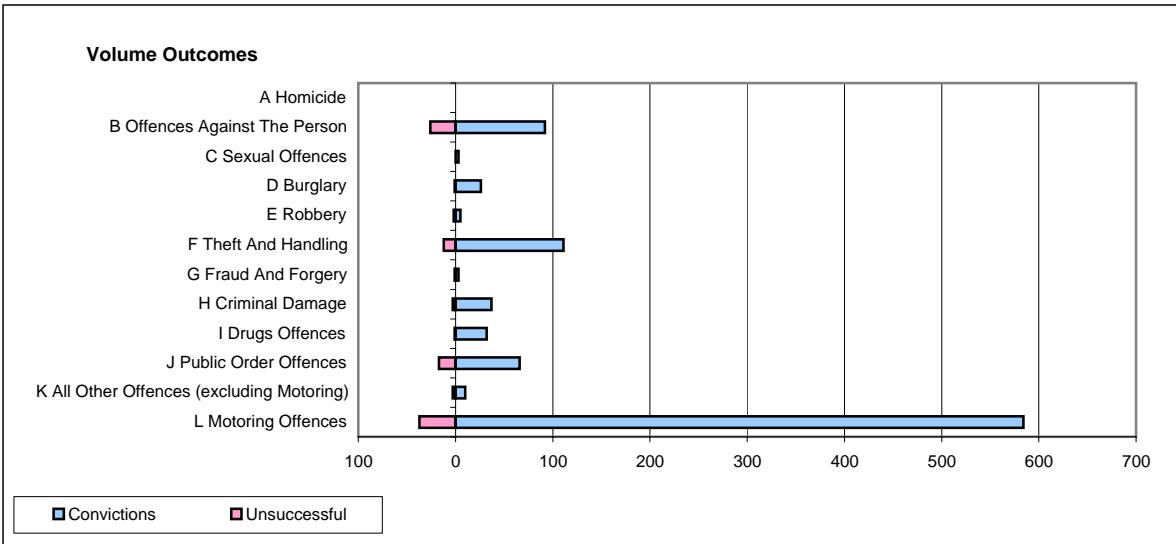
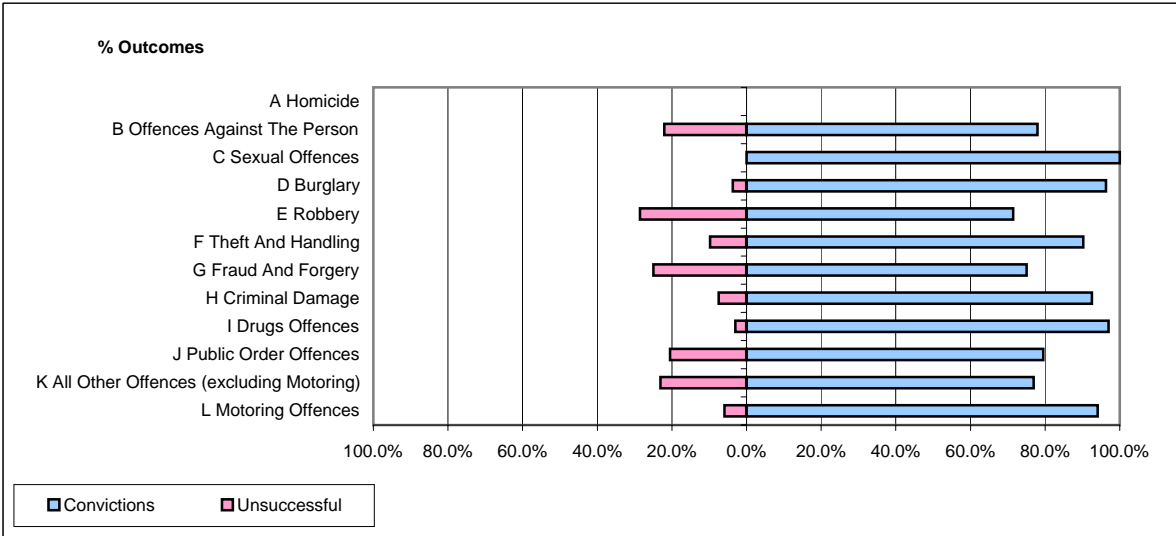


CPS OUTCOMES BY PRINCIPAL OFFENCE CATEGORY

April 2007

P23-Lincolnshire



	Convictions		Unsuccessful	
	Number of Defendants	%	Number of Defendants	%
A Homicide	0	#DIV/0!	0	#DIV/0!
B Offences Against The Person	92	78.0%	26	22.0%
C Sexual Offences	3	100.0%	0	0.0%
D Burglary	26	96.3%	1	3.7%
E Robbery	5	71.4%	2	28.6%
F Theft And Handling	111	90.2%	12	9.8%
G Fraud And Forgery	3	75.0%	1	25.0%
H Criminal Damage	37	92.5%	3	7.5%
I Drugs Offences	32	97.0%	1	3.0%
J Public Order Offences	66	79.5%	17	20.5%
K All Other Offences (excluding Motoring)	10	76.9%	3	23.1%
L Motoring Offences	584	94.0%	37	6.0%
Admin Finalisations	0	0.0%	9	100.0%
TOTAL	969	89.6%	112	10.4%