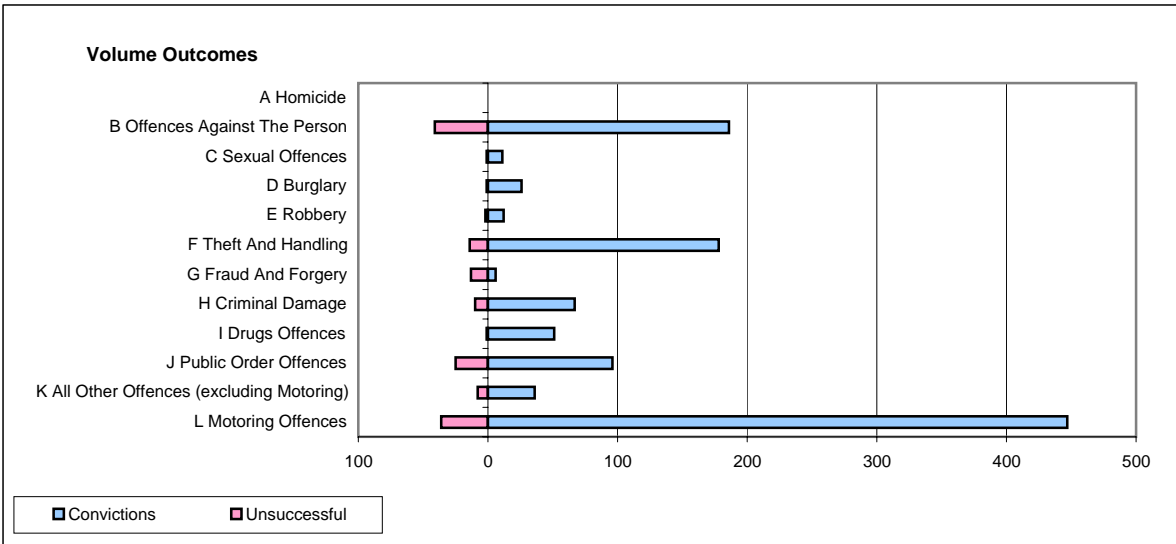
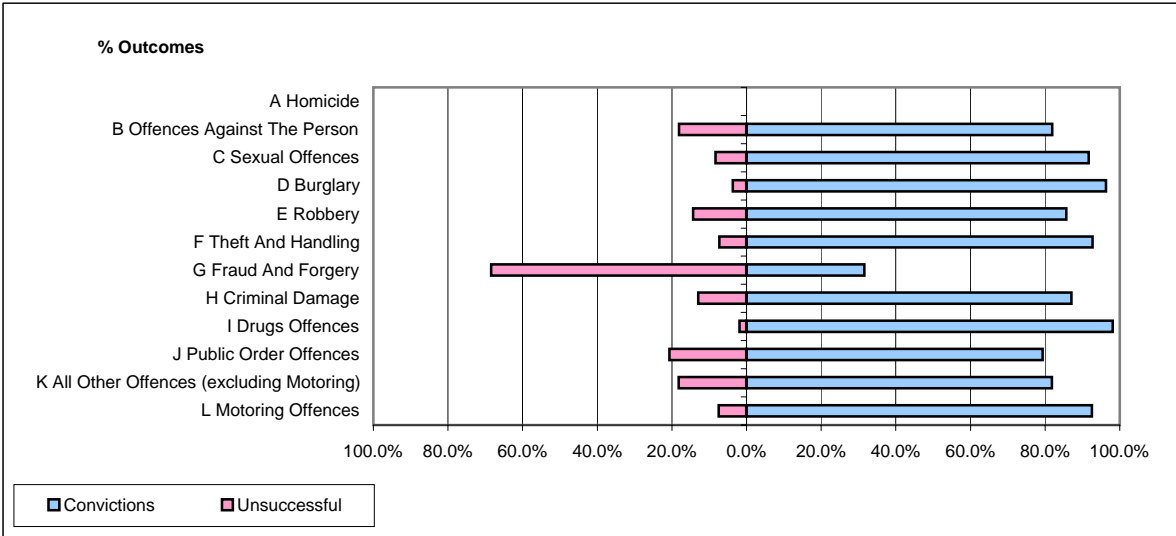


CPS OUTCOMES BY PRINCIPAL OFFENCE CATEGORY

April 2007

P22-Leicestershire



	Convictions		Unsuccessful	
	Number of Defendants	%	Number of Defendants	%
A Homicide	0	#DIV/0!	0	#DIV/0!
B Offences Against The Person	186	81.9%	41	18.1%
C Sexual Offences	11	91.7%	1	8.3%
D Burglary	26	96.3%	1	3.7%
E Robbery	12	85.7%	2	14.3%
F Theft And Handling	178	92.7%	14	7.3%
G Fraud And Forgery	6	31.6%	13	68.4%
H Criminal Damage	67	87.0%	10	13.0%
I Drugs Offences	51	98.1%	1	1.9%
J Public Order Offences	96	79.3%	25	20.7%
K All Other Offences (excluding Motoring)	36	81.8%	8	18.2%
L Motoring Offences	447	92.5%	36	7.5%
Admin Finalisations	0	0.0%	26	100.0%
TOTAL	1,116	86.2%	178	13.8%