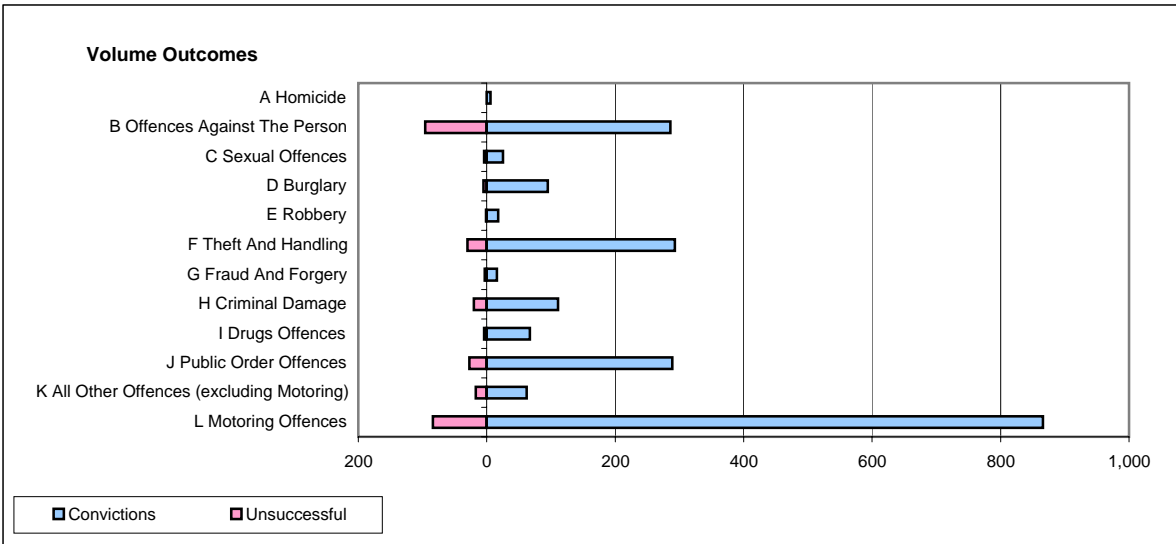
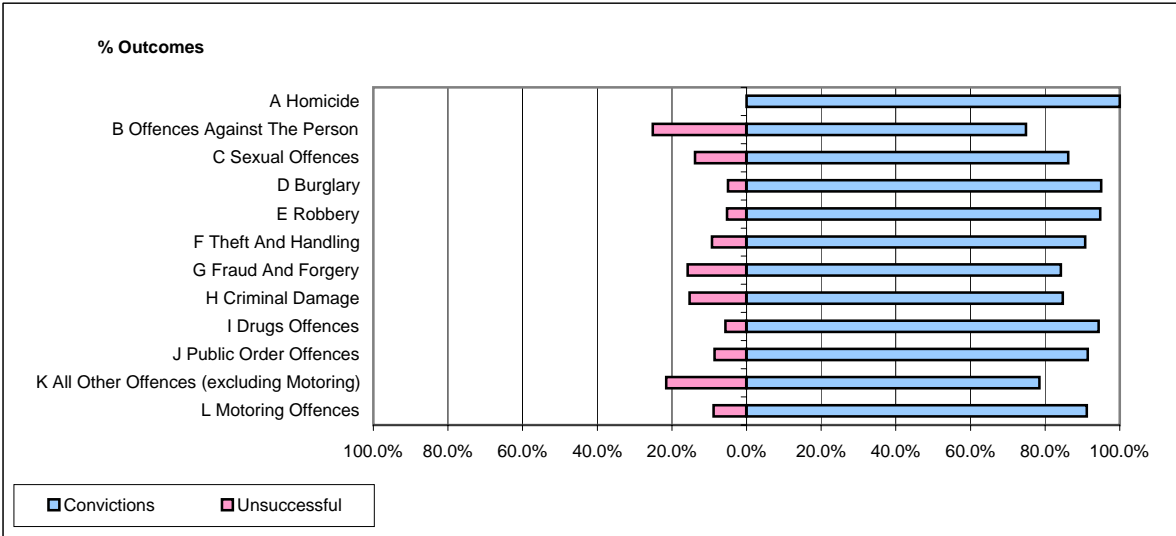


**CPS OUTCOMES BY PRINCIPAL OFFENCE CATEGORY**

**April 2007**

**P21-Lancashire**



	Convictions		Unsuccessful	
	Number of Defendants	%	Number of Defendants	%
<b>A Homicide</b>	6	100.0%	0	0.0%
<b>B Offences Against The Person</b>	286	74.9%	96	25.1%
<b>C Sexual Offences</b>	25	86.2%	4	13.8%
<b>D Burglary</b>	95	95.0%	5	5.0%
<b>E Robbery</b>	18	94.7%	1	5.3%
<b>F Theft And Handling</b>	293	90.7%	30	9.3%
<b>G Fraud And Forgery</b>	16	84.2%	3	15.8%
<b>H Criminal Damage</b>	111	84.7%	20	15.3%
<b>I Drugs Offences</b>	67	94.4%	4	5.6%
<b>J Public Order Offences</b>	289	91.5%	27	8.5%
<b>K All Other Offences (excluding Motoring)</b>	62	78.5%	17	21.5%
<b>L Motoring Offences</b>	866	91.2%	84	8.8%
<b>Admin Finalisations</b>	0	0.0%	40	100.0%
<b>TOTAL</b>	2,134	86.6%	331	13.4%