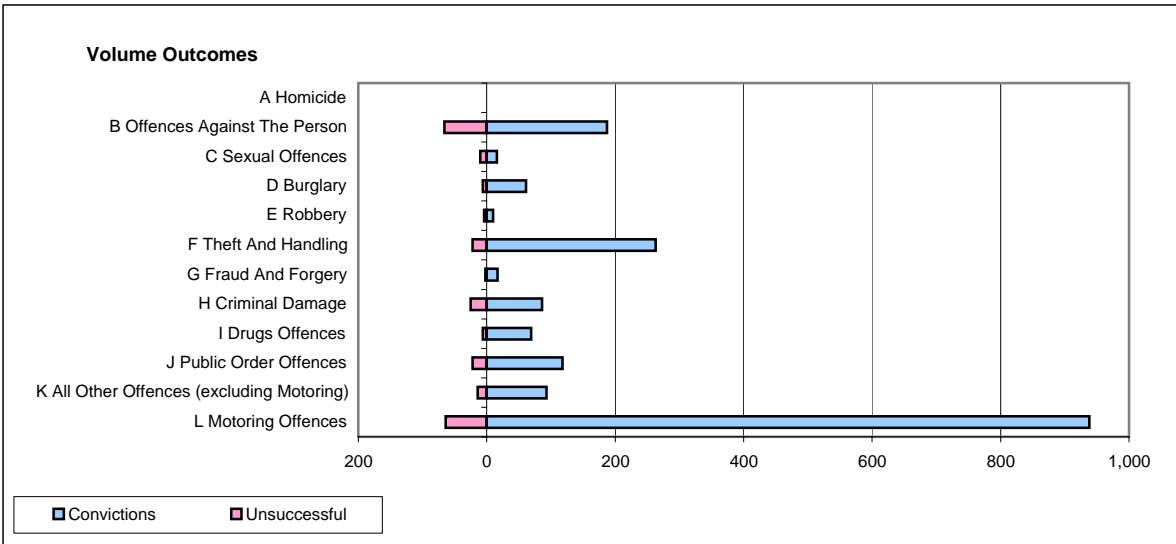
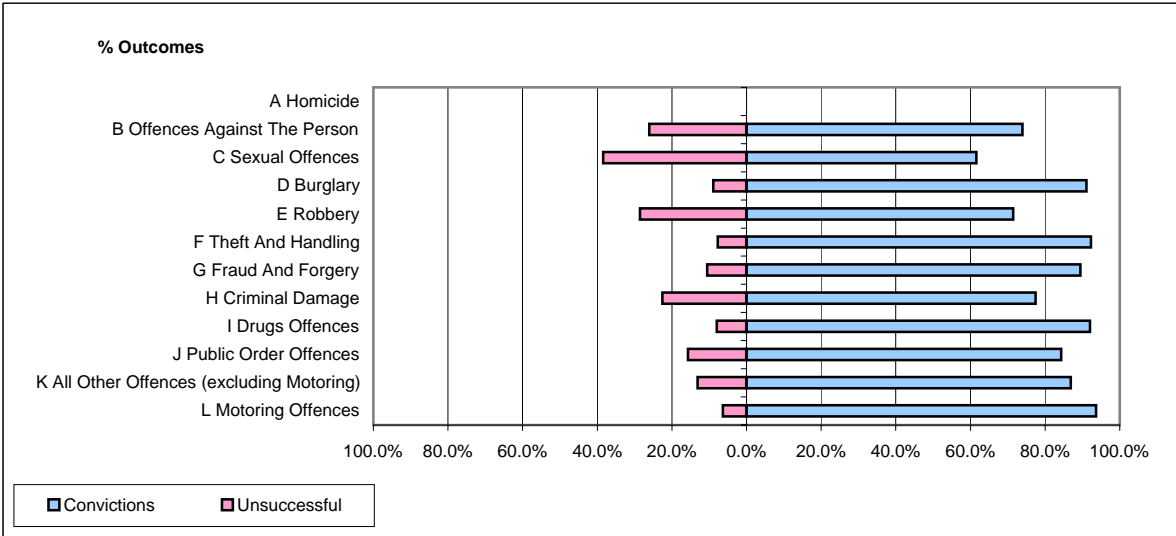


CPS OUTCOMES BY PRINCIPAL OFFENCE CATEGORY

April 2007

P20-Kent



	Convictions		Unsuccessful	
	Number of Defendants	%	Number of Defendants	%
A Homicide	0	#DIV/0!	0	#DIV/0!
B Offences Against The Person	187	73.9%	66	26.1%
C Sexual Offences	16	61.5%	10	38.5%
D Burglary	61	91.0%	6	9.0%
E Robbery	10	71.4%	4	28.6%
F Theft And Handling	263	92.3%	22	7.7%
G Fraud And Forgery	17	89.5%	2	10.5%
H Criminal Damage	86	77.5%	25	22.5%
I Drugs Offences	69	92.0%	6	8.0%
J Public Order Offences	118	84.3%	22	15.7%
K All Other Offences (excluding Motoring)	93	86.9%	14	13.1%
L Motoring Offences	938	93.6%	64	6.4%
Admin Finalisations	0	0.0%	25	100.0%
TOTAL	1,858	87.5%	266	12.5%