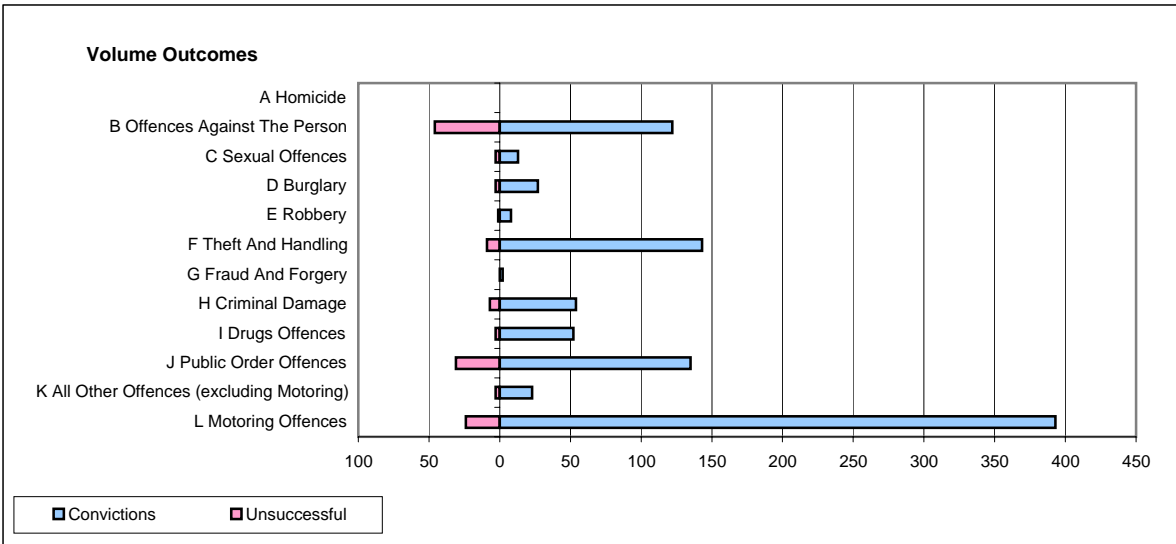
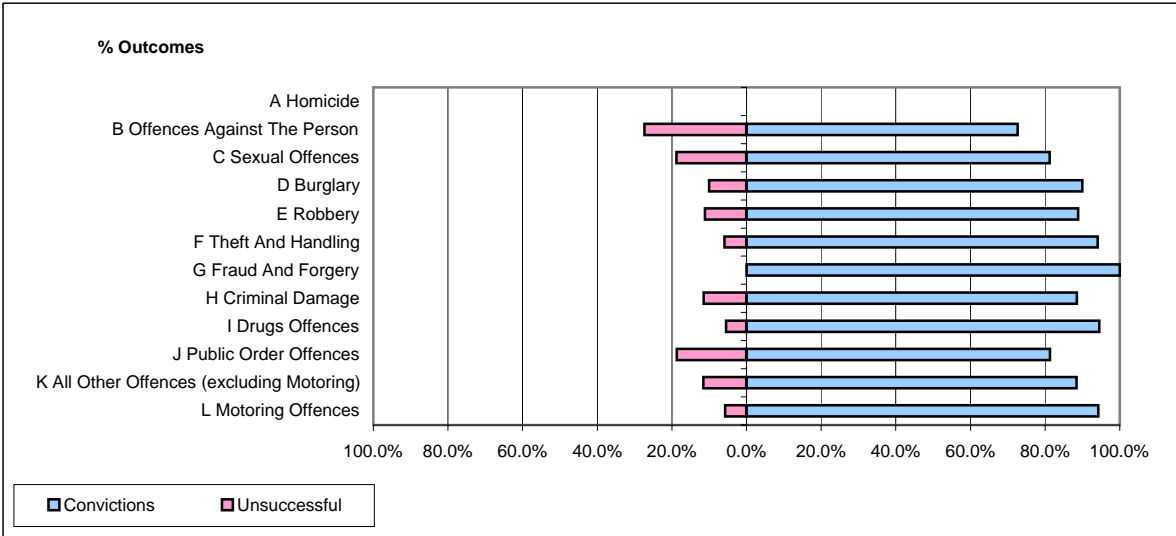


CPS OUTCOMES BY PRINCIPAL OFFENCE CATEGORY

April 2007

P16-Gwent



	Convictions		Unsuccessful	
	Number of Defendants	%	Number of Defendants	%
A Homicide	0	#DIV/0!	0	#DIV/0!
B Offences Against The Person	122	72.6%	46	27.4%
C Sexual Offences	13	81.3%	3	18.8%
D Burglary	27	90.0%	3	10.0%
E Robbery	8	88.9%	1	11.1%
F Theft And Handling	143	94.1%	9	5.9%
G Fraud And Forgery	2	100.0%	0	0.0%
H Criminal Damage	54	88.5%	7	11.5%
I Drugs Offences	52	94.5%	3	5.5%
J Public Order Offences	135	81.3%	31	18.7%
K All Other Offences (excluding Motoring)	23	88.5%	3	11.5%
L Motoring Offences	393	94.2%	24	5.8%
Admin Finalisations	0	0.0%	14	100.0%
TOTAL	972	87.1%	144	12.9%