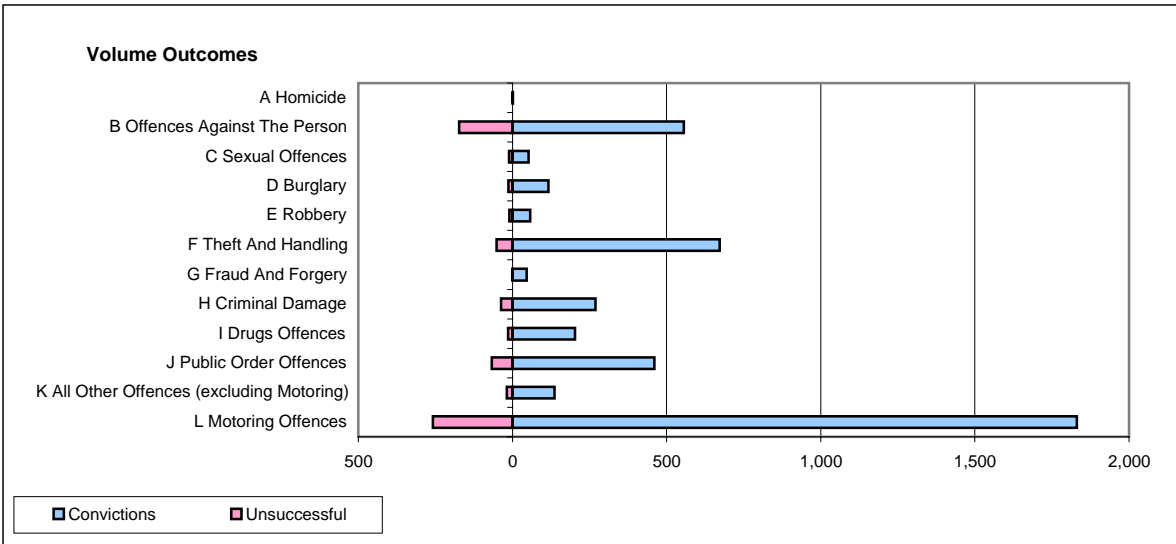
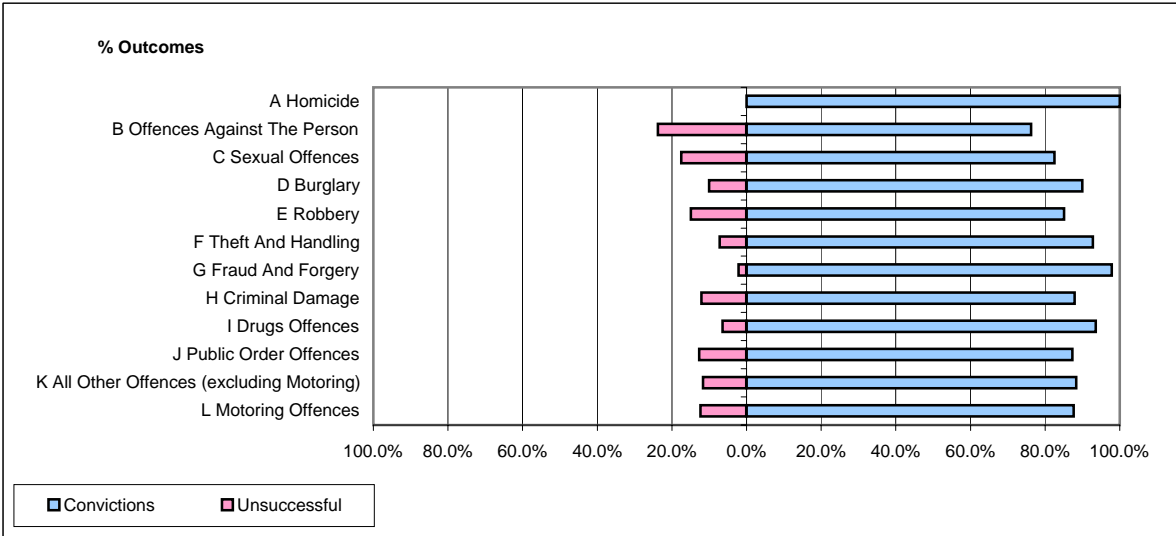


CPS OUTCOMES BY PRINCIPAL OFFENCE CATEGORY

April 2007

P15-GreaterManchester



	Convictions		Unsuccessful	
	Number of Defendants	%	Number of Defendants	%
A Homicide	1	100.0%	0	0.0%
B Offences Against The Person	556	76.3%	173	23.7%
C Sexual Offences	52	82.5%	11	17.5%
D Burglary	117	90.0%	13	10.0%
E Robbery	57	85.1%	10	14.9%
F Theft And Handling	672	92.8%	52	7.2%
G Fraud And Forgery	46	97.9%	1	2.1%
H Criminal Damage	269	87.9%	37	12.1%
I Drugs Offences	203	93.5%	14	6.5%
J Public Order Offences	460	87.3%	67	12.7%
K All Other Offences (excluding Motoring)	136	88.3%	18	11.7%
L Motoring Offences	1,831	87.6%	258	12.4%
Admin Finalisations	0	0.0%	78	100.0%
TOTAL	4,400	85.7%	732	14.3%