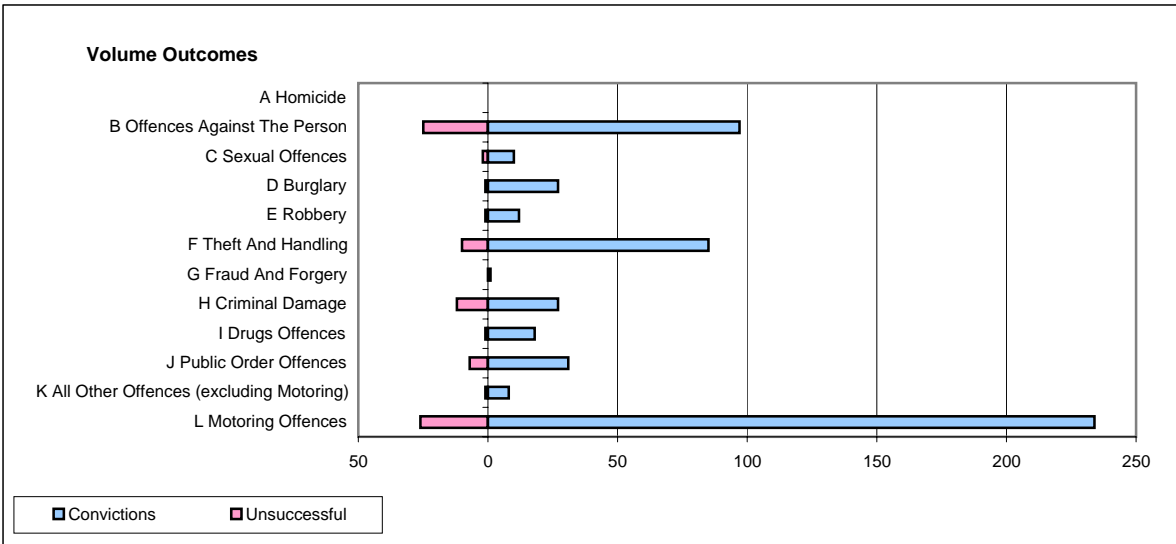
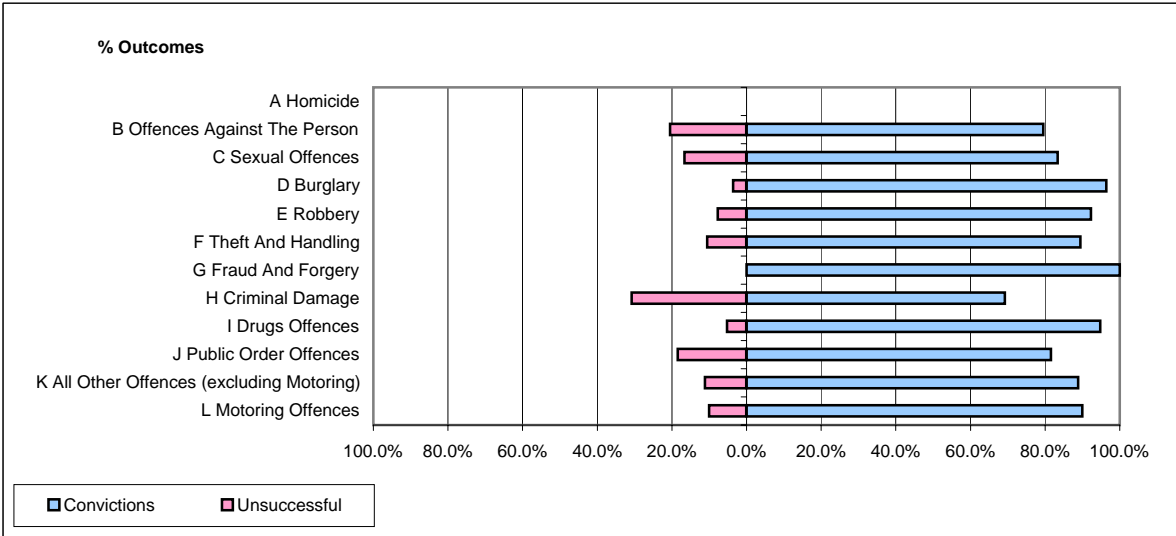


CPS OUTCOMES BY PRINCIPAL OFFENCE CATEGORY

April 2007

P14-Gloucestershire



	Convictions		Unsuccessful	
	Number of Defendants	%	Number of Defendants	%
A Homicide	0	#DIV/0!	0	#DIV/0!
B Offences Against The Person	97	79.5%	25	20.5%
C Sexual Offences	10	83.3%	2	16.7%
D Burglary	27	96.4%	1	3.6%
E Robbery	12	92.3%	1	7.7%
F Theft And Handling	85	89.5%	10	10.5%
G Fraud And Forgery	1	100.0%	0	0.0%
H Criminal Damage	27	69.2%	12	30.8%
I Drugs Offences	18	94.7%	1	5.3%
J Public Order Offences	31	81.6%	7	18.4%
K All Other Offences (excluding Motoring)	8	88.9%	1	11.1%
L Motoring Offences	234	90.0%	26	10.0%
Admin Finalisations	0	0.0%	8	100.0%
TOTAL	550	85.4%	94	14.6%