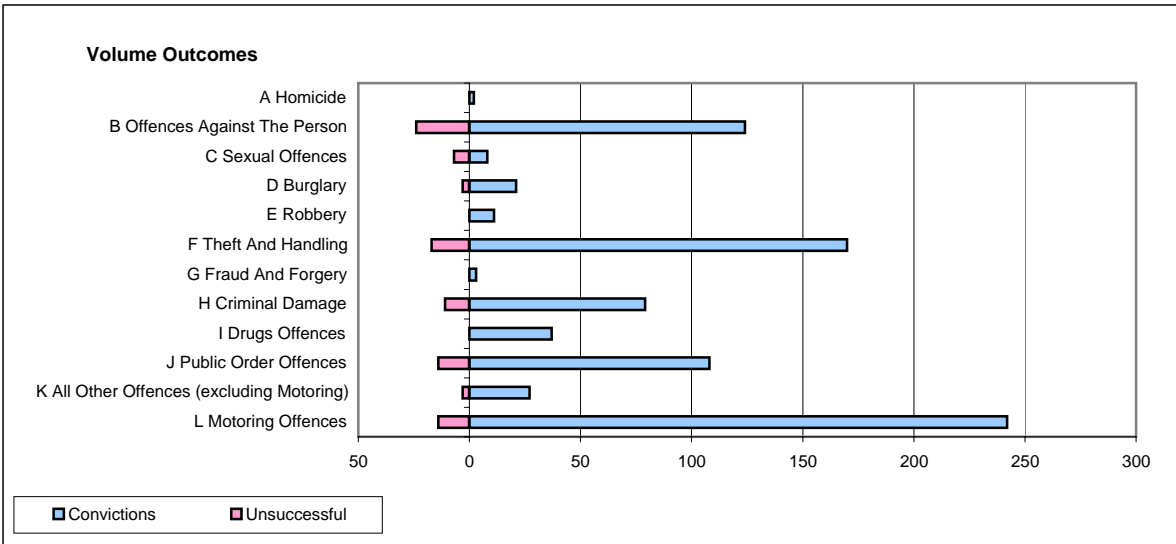
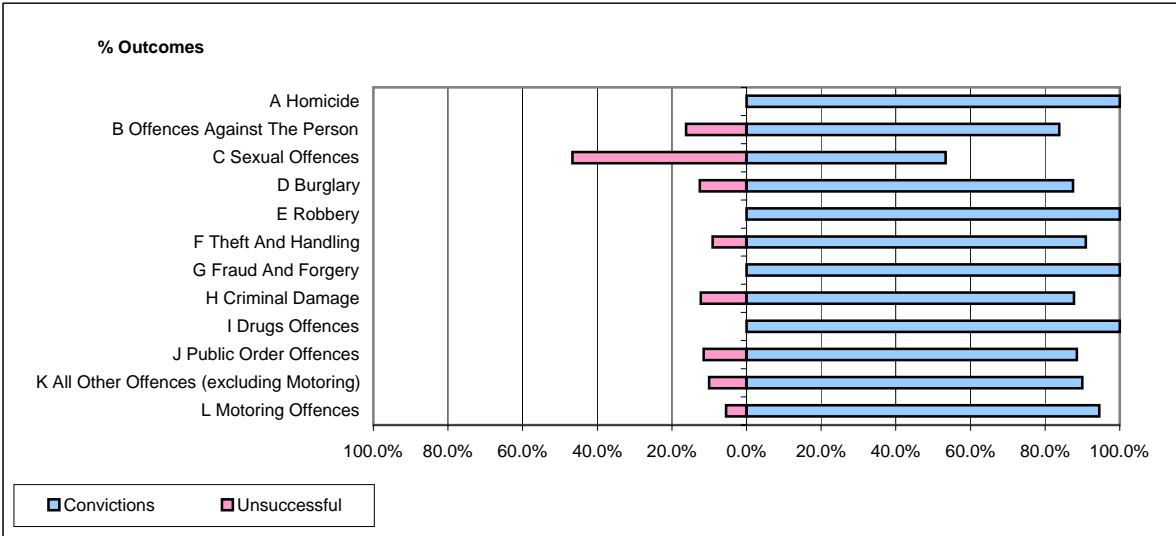


**CPS OUTCOMES BY PRINCIPAL OFFENCE CATEGORY**

**April 2007**

**P11-Durham**



	Convictions		Unsuccessful	
	Number of Defendants	%	Number of Defendants	%
<b>A Homicide</b>	<b>2</b>	<b>100.0%</b>	<b>0</b>	<b>0.0%</b>
<b>B Offences Against The Person</b>	<b>124</b>	<b>83.8%</b>	<b>24</b>	<b>16.2%</b>
<b>C Sexual Offences</b>	<b>8</b>	<b>53.3%</b>	<b>7</b>	<b>46.7%</b>
<b>D Burglary</b>	<b>21</b>	<b>87.5%</b>	<b>3</b>	<b>12.5%</b>
<b>E Robbery</b>	<b>11</b>	<b>100.0%</b>	<b>0</b>	<b>0.0%</b>
<b>F Theft And Handling</b>	<b>170</b>	<b>90.9%</b>	<b>17</b>	<b>9.1%</b>
<b>G Fraud And Forgery</b>	<b>3</b>	<b>100.0%</b>	<b>0</b>	<b>0.0%</b>
<b>H Criminal Damage</b>	<b>79</b>	<b>87.8%</b>	<b>11</b>	<b>12.2%</b>
<b>I Drugs Offences</b>	<b>37</b>	<b>100.0%</b>	<b>0</b>	<b>0.0%</b>
<b>J Public Order Offences</b>	<b>108</b>	<b>88.5%</b>	<b>14</b>	<b>11.5%</b>
<b>K All Other Offences (excluding Motoring)</b>	<b>27</b>	<b>90.0%</b>	<b>3</b>	<b>10.0%</b>
<b>L Motoring Offences</b>	<b>242</b>	<b>94.5%</b>	<b>14</b>	<b>5.5%</b>
<b>Admin Finalisations</b>	<b>0</b>	<b>0.0%</b>	<b>8</b>	<b>100.0%</b>
<b>TOTAL</b>	<b>832</b>	<b>89.2%</b>	<b>101</b>	<b>10.8%</b>