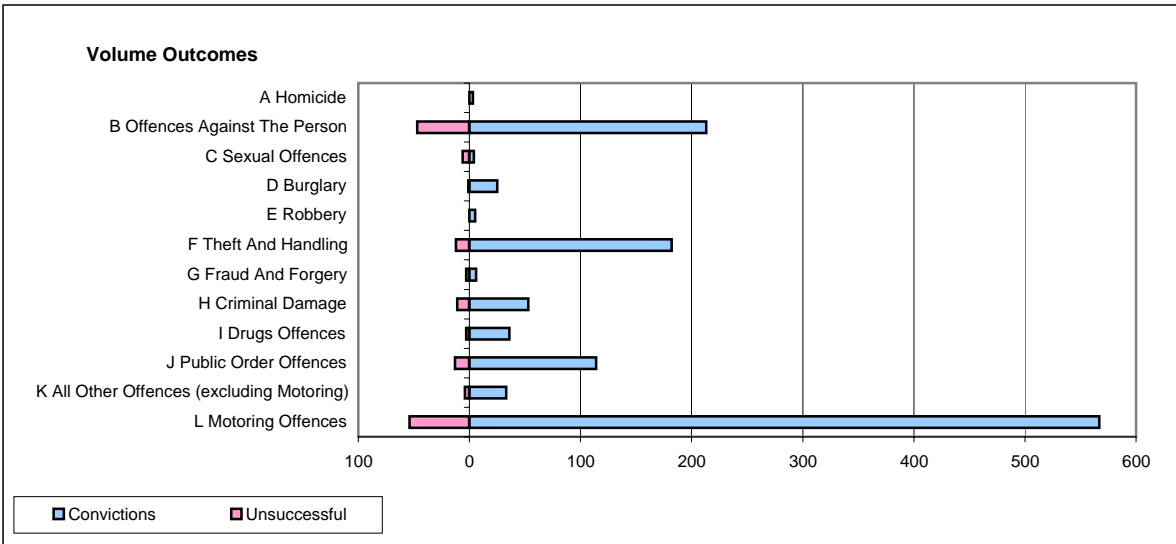
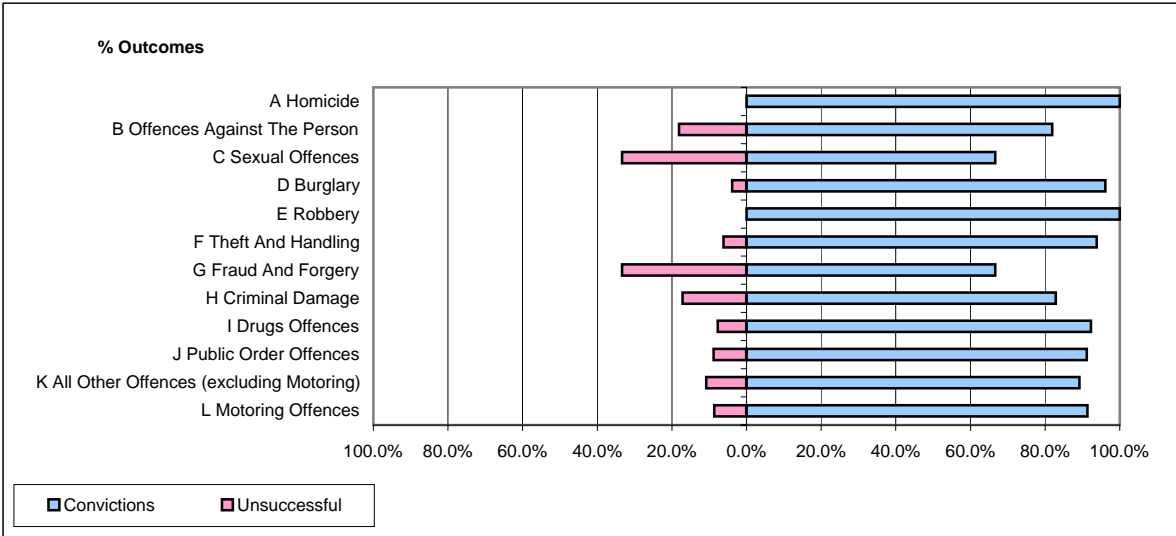


CPS OUTCOMES BY PRINCIPAL OFFENCE CATEGORY

April 2007

P04-Cheshire



	Convictions		Unsuccessful	
	Number of Defendants	%	Number of Defendants	%
A Homicide	3	100.0%	0	0.0%
B Offences Against The Person	213	81.9%	47	18.1%
C Sexual Offences	4	66.7%	6	33.3%
D Burglary	25	96.2%	1	3.8%
E Robbery	5	100.0%	0	0.0%
F Theft And Handling	182	93.8%	12	6.2%
G Fraud And Forgery	6	66.7%	3	33.3%
H Criminal Damage	53	82.8%	11	17.2%
I Drugs Offences	36	92.3%	3	7.7%
J Public Order Offences	114	91.2%	13	8.8%
K All Other Offences (excluding Motoring)	33	89.2%	4	10.8%
L Motoring Offences	567	91.3%	54	8.7%
Admin Finalisations	0	0.0%	12	100.0%
TOTAL	1,241	88.2%	166	11.8%