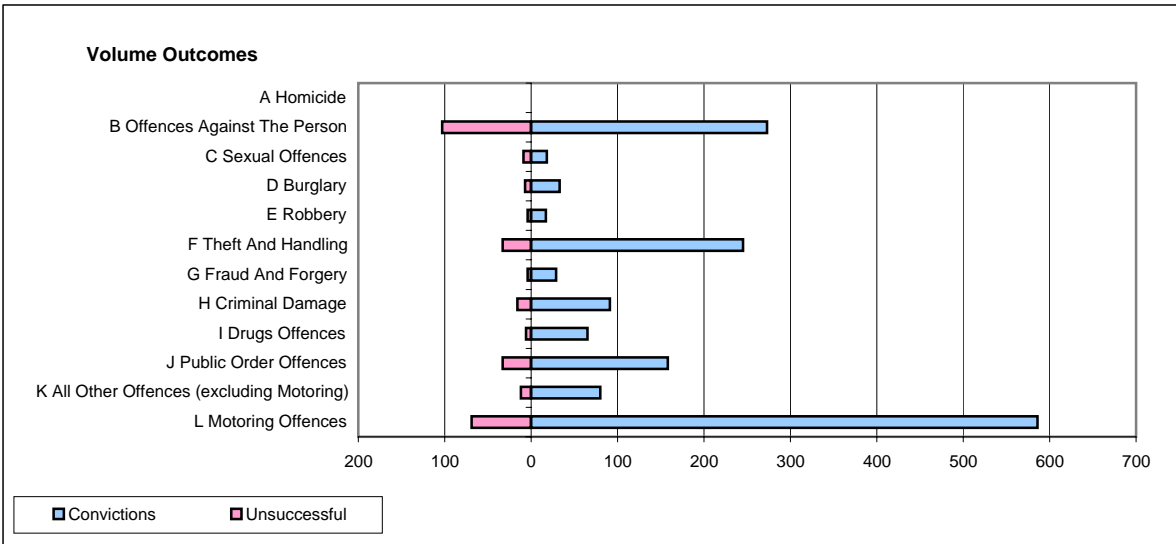
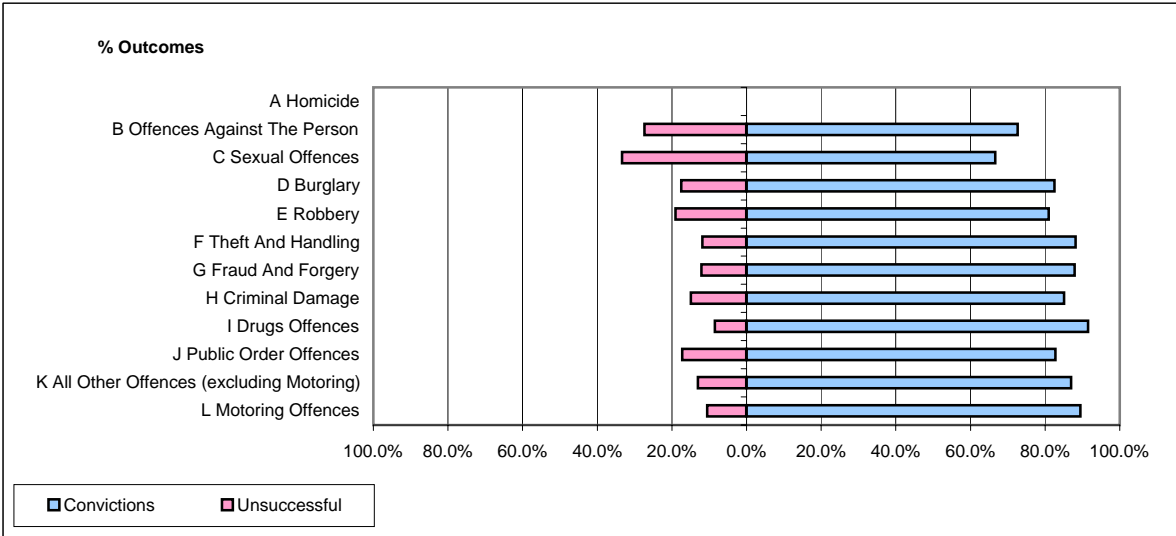


**CPS OUTCOMES BY PRINCIPAL OFFENCE CATEGORY**

**March 2007**

**P37-Sussex**



	Convictions		Unsuccessful	
	Number of Defendants	%	Number of Defendants	%
<b>A Homicide</b>	<b>0</b>	<b>#DIV/0!</b>	<b>0</b>	<b>#DIV/0!</b>
<b>B Offences Against The Person</b>	<b>273</b>	<b>72.6%</b>	<b>103</b>	<b>27.4%</b>
<b>C Sexual Offences</b>	<b>18</b>	<b>66.7%</b>	<b>9</b>	<b>33.3%</b>
<b>D Burglary</b>	<b>33</b>	<b>82.5%</b>	<b>7</b>	<b>17.5%</b>
<b>E Robbery</b>	<b>17</b>	<b>81.0%</b>	<b>4</b>	<b>19.0%</b>
<b>F Theft And Handling</b>	<b>245</b>	<b>88.1%</b>	<b>33</b>	<b>11.9%</b>
<b>G Fraud And Forgery</b>	<b>29</b>	<b>87.9%</b>	<b>4</b>	<b>12.1%</b>
<b>H Criminal Damage</b>	<b>91</b>	<b>85.0%</b>	<b>16</b>	<b>15.0%</b>
<b>I Drugs Offences</b>	<b>65</b>	<b>91.5%</b>	<b>6</b>	<b>8.5%</b>
<b>J Public Order Offences</b>	<b>158</b>	<b>82.7%</b>	<b>33</b>	<b>17.3%</b>
<b>K All Other Offences (excluding Motoring)</b>	<b>80</b>	<b>87.0%</b>	<b>12</b>	<b>13.0%</b>
<b>L Motoring Offences</b>	<b>586</b>	<b>89.5%</b>	<b>69</b>	<b>10.5%</b>
<b>Admin Finalisations</b>	<b>0</b>	<b>0.0%</b>	<b>58</b>	<b>100.0%</b>
<b>TOTAL</b>	<b>1,595</b>	<b>81.8%</b>	<b>354</b>	<b>18.2%</b>