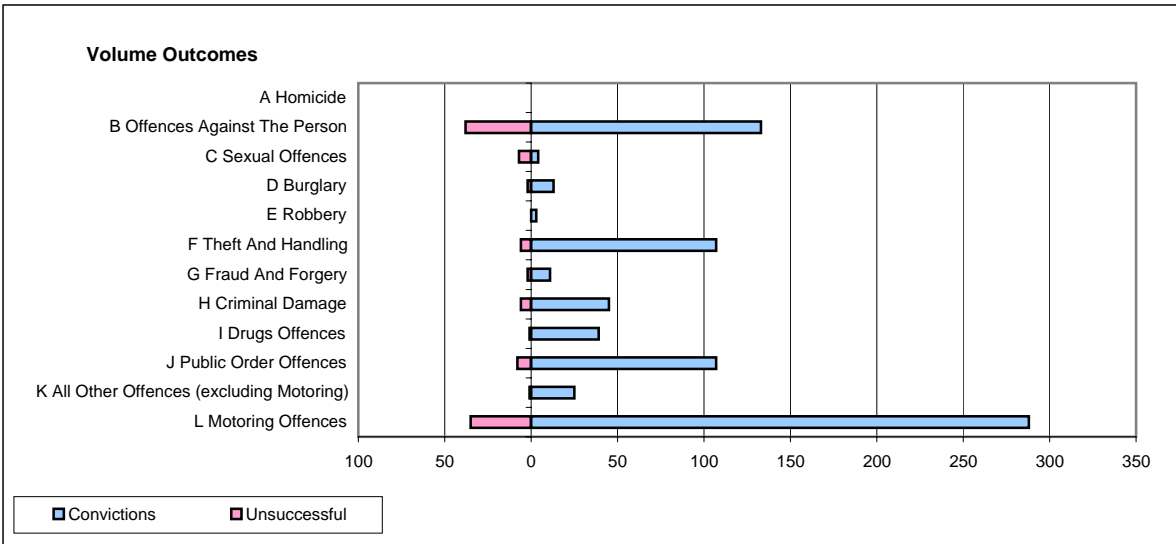
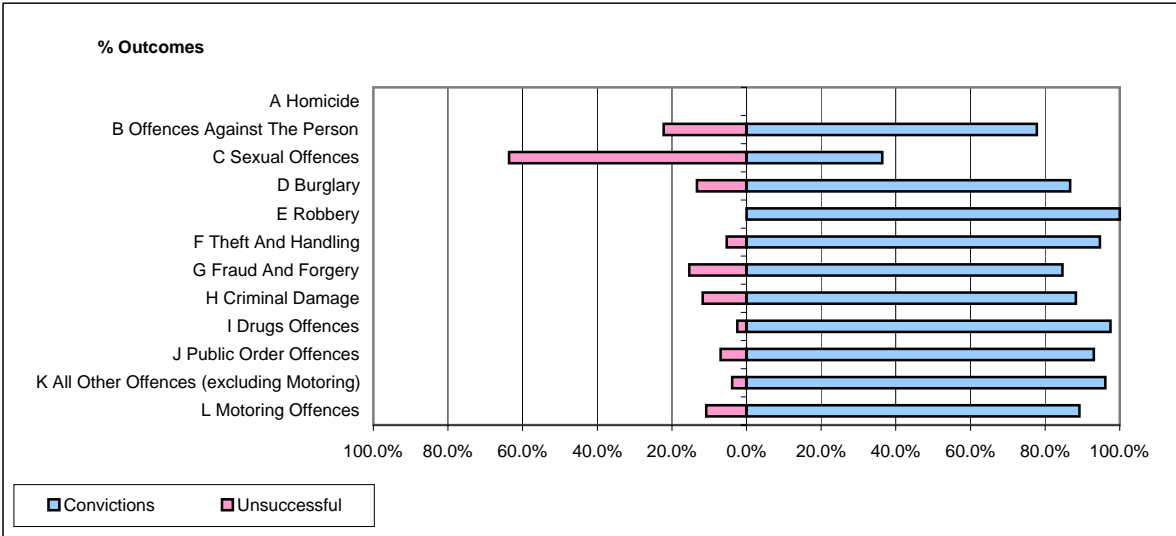


CPS OUTCOMES BY PRINCIPAL OFFENCE CATEGORY

March 2007

P35-Suffolk



	Convictions		Unsuccessful	
	Number of Defendants	%	Number of Defendants	%
A Homicide	0	#DIV/0!	0	#DIV/0!
B Offences Against The Person	133	77.8%	38	22.2%
C Sexual Offences	4	36.4%	7	63.6%
D Burglary	13	86.7%	2	13.3%
E Robbery	3	100.0%	0	0.0%
F Theft And Handling	107	94.7%	6	5.3%
G Fraud And Forgery	11	84.6%	2	15.4%
H Criminal Damage	45	88.2%	6	11.8%
I Drugs Offences	39	97.5%	1	2.5%
J Public Order Offences	107	93.0%	8	7.0%
K All Other Offences (excluding Motoring)	25	96.2%	1	3.8%
L Motoring Offences	288	89.2%	35	10.8%
Admin Finalisations	0	0.0%	14	100.0%
TOTAL	775	86.6%	120	13.4%