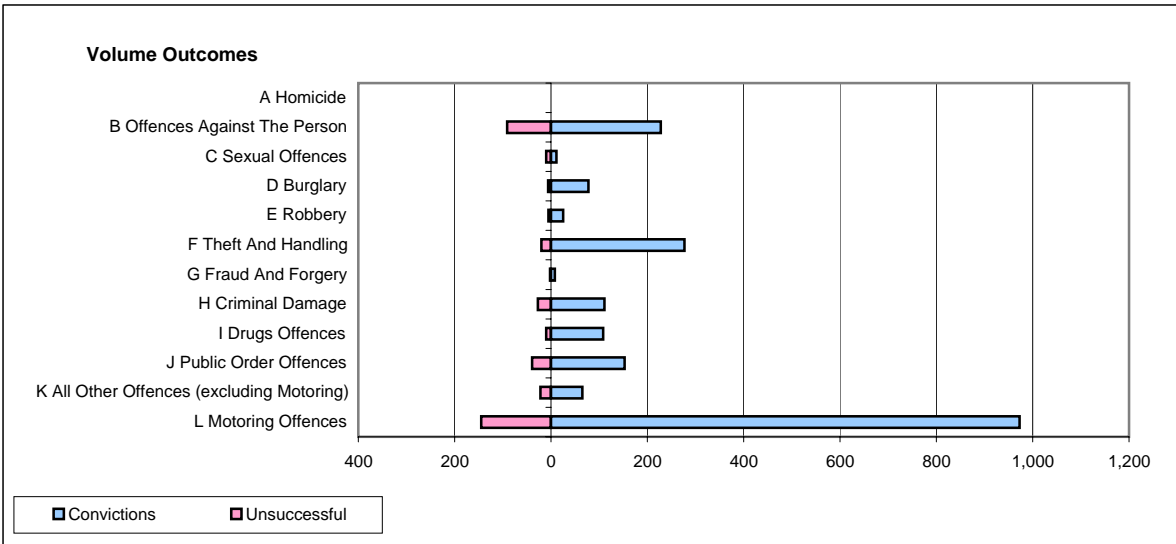
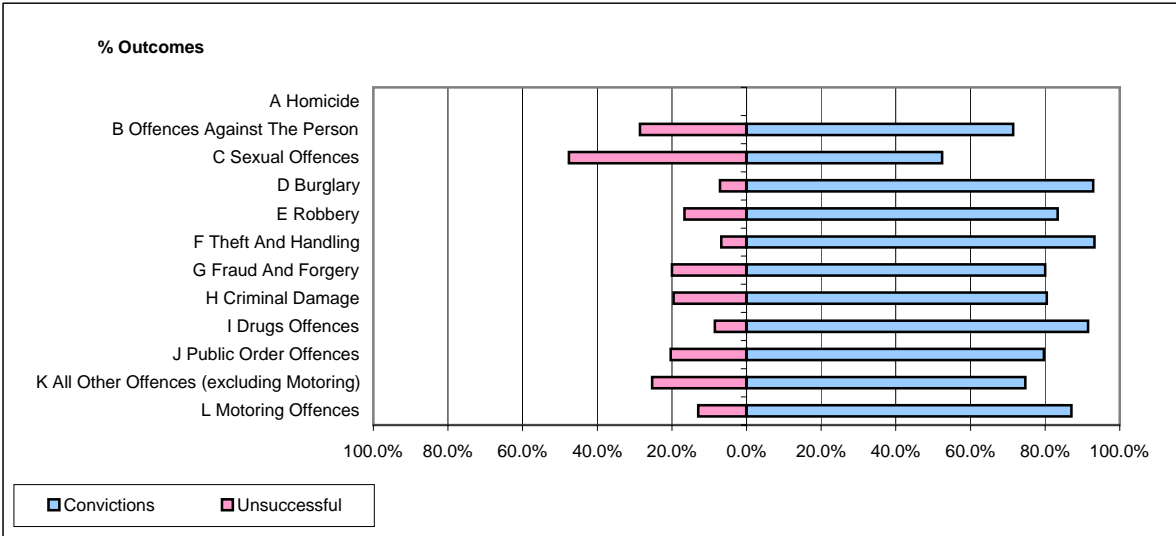


**CPS OUTCOMES BY PRINCIPAL OFFENCE CATEGORY**

**March 2007**

**P32-SouthWales**



	Convictions		Unsuccessful	
	Number of Defendants	%	Number of Defendants	%
<b>A Homicide</b>	<b>0</b>	<b>#DIV/0!</b>	<b>0</b>	<b>#DIV/0!</b>
<b>B Offences Against The Person</b>	<b>228</b>	<b>71.5%</b>	<b>91</b>	<b>28.5%</b>
<b>C Sexual Offences</b>	<b>11</b>	<b>52.4%</b>	<b>10</b>	<b>47.6%</b>
<b>D Burglary</b>	<b>78</b>	<b>92.9%</b>	<b>6</b>	<b>7.1%</b>
<b>E Robbery</b>	<b>25</b>	<b>83.3%</b>	<b>5</b>	<b>16.7%</b>
<b>F Theft And Handling</b>	<b>277</b>	<b>93.3%</b>	<b>20</b>	<b>6.7%</b>
<b>G Fraud And Forgery</b>	<b>8</b>	<b>80.0%</b>	<b>2</b>	<b>20.0%</b>
<b>H Criminal Damage</b>	<b>111</b>	<b>80.4%</b>	<b>27</b>	<b>19.6%</b>
<b>I Drugs Offences</b>	<b>108</b>	<b>91.5%</b>	<b>10</b>	<b>8.5%</b>
<b>J Public Order Offences</b>	<b>153</b>	<b>79.7%</b>	<b>39</b>	<b>20.3%</b>
<b>K All Other Offences (excluding Motoring)</b>	<b>65</b>	<b>74.7%</b>	<b>22</b>	<b>25.3%</b>
<b>L Motoring Offences</b>	<b>973</b>	<b>87.0%</b>	<b>145</b>	<b>13.0%</b>
<b>Admin Finalisations</b>	<b>0</b>	<b>0.0%</b>	<b>100</b>	<b>100.0%</b>
<b>TOTAL</b>	<b>2,037</b>	<b>81.0%</b>	<b>477</b>	<b>19.0%</b>