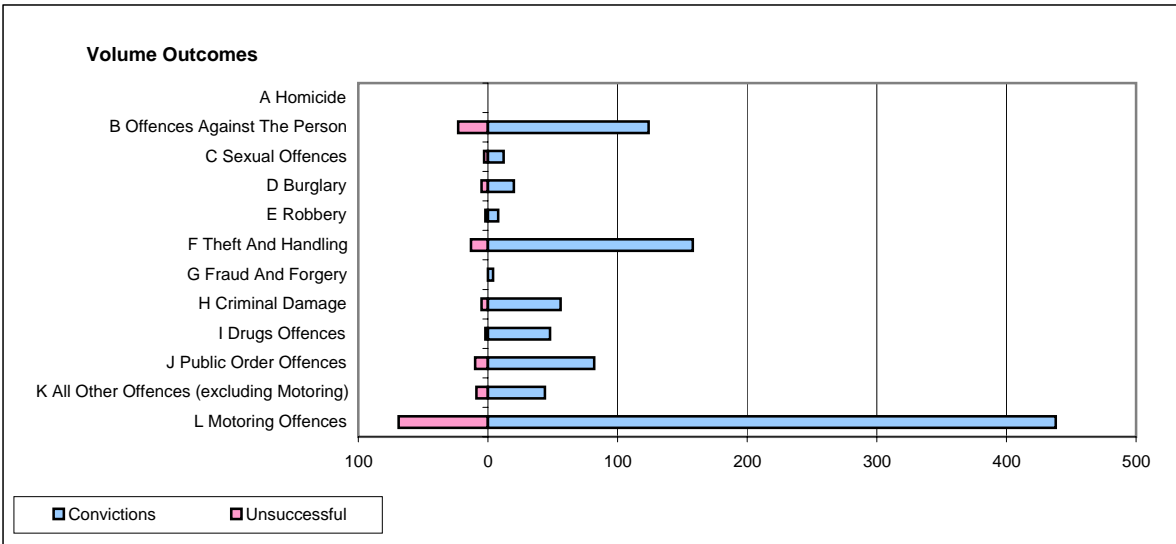
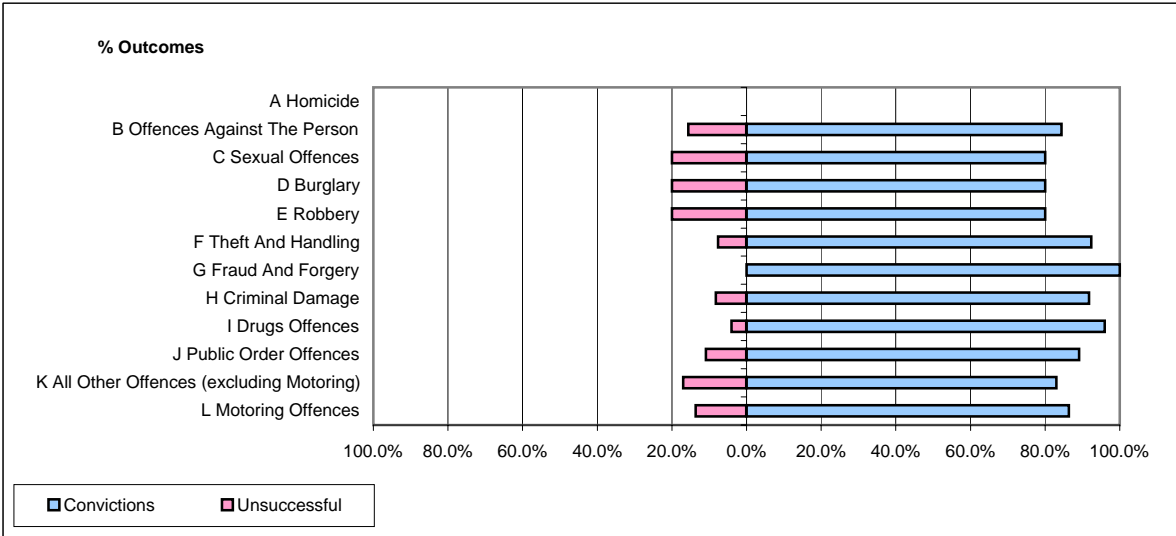


CPS OUTCOMES BY PRINCIPAL OFFENCE CATEGORY

March 2007

P26-Norfolk



	Convictions		Unsuccessful	
	Number of Defendants	%	Number of Defendants	%
A Homicide	0	#DIV/0!	0	#DIV/0!
B Offences Against The Person	124	84.0%	23	15.6%
C Sexual Offences	12	80.0%	3	20.0%
D Burglary	20	80.0%	5	20.0%
E Robbery	8	80.0%	2	20.0%
F Theft And Handling	158	92.4%	13	7.6%
G Fraud And Forgery	4	100.0%	0	0.0%
H Criminal Damage	56	91.8%	5	8.2%
I Drugs Offences	48	96.0%	2	4.0%
J Public Order Offences	82	89.1%	10	10.9%
K All Other Offences (excluding Motoring)	44	83.0%	9	17.0%
L Motoring Offences	438	86.4%	69	13.6%
Admin Finalisations	0	0.0%	21	100.0%
TOTAL	994	86.0%	162	14.0%