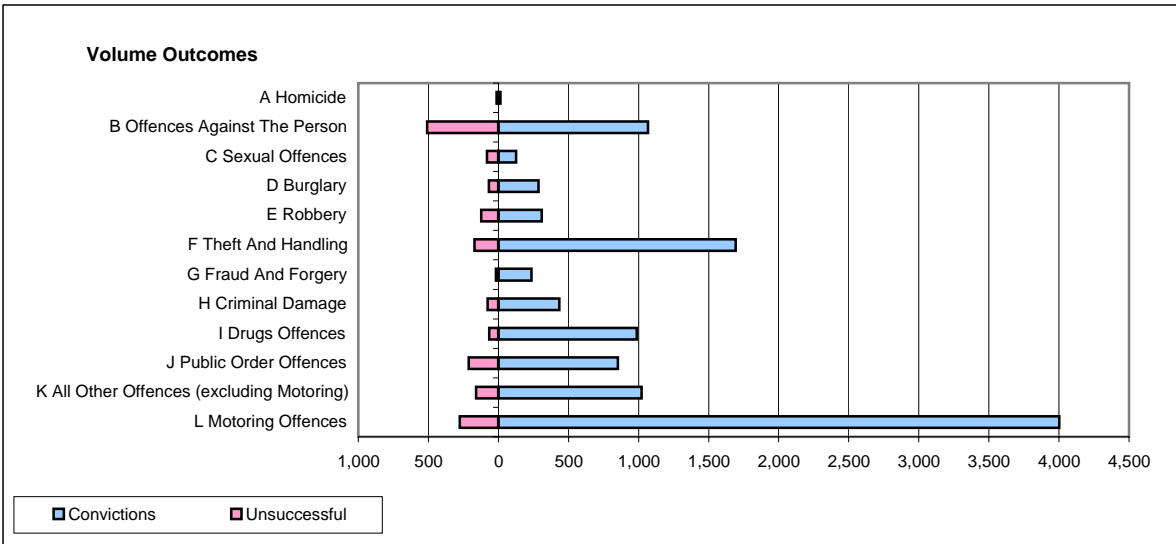
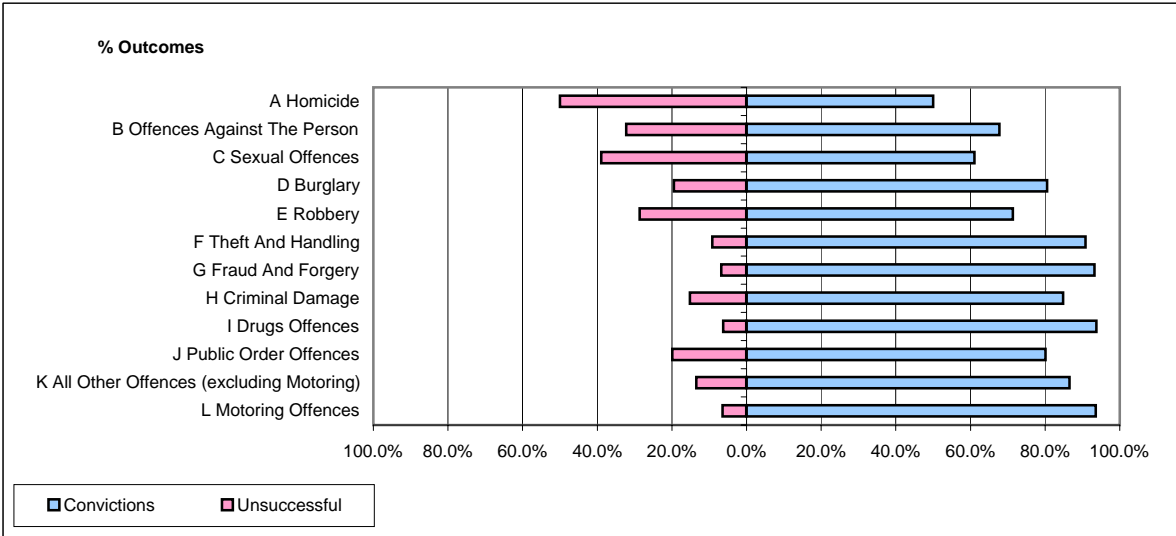


**CPS OUTCOMES BY PRINCIPAL OFFENCE CATEGORY**

**March 2007**

**P25-Metropolitan&City**



	Convictions		Unsuccessful	
	Number of Defendants	%	Number of Defendants	%
<b>A Homicide</b>	13	50.0%	13	50.0%
<b>B Offences Against The Person</b>	1,067	67.7%	508	32.3%
<b>C Sexual Offences</b>	127	61.1%	81	38.9%
<b>D Burglary</b>	286	80.6%	69	19.4%
<b>E Robbery</b>	309	71.4%	124	28.6%
<b>F Theft And Handling</b>	1,693	90.8%	171	9.2%
<b>G Fraud And Forgery</b>	235	93.3%	17	6.7%
<b>H Criminal Damage</b>	435	84.8%	78	15.2%
<b>I Drugs Offences</b>	988	93.7%	66	6.3%
<b>J Public Order Offences</b>	852	80.1%	212	19.9%
<b>K All Other Offences (excluding Motoring)</b>	1,022	86.5%	159	13.5%
<b>L Motoring Offences</b>	4,003	93.5%	276	6.5%
<b>Admin Finalisations</b>	0	0.0%	432	100.0%
<b>TOTAL</b>	<b>11,030</b>	<b>83.3%</b>	<b>2,206</b>	<b>16.7%</b>