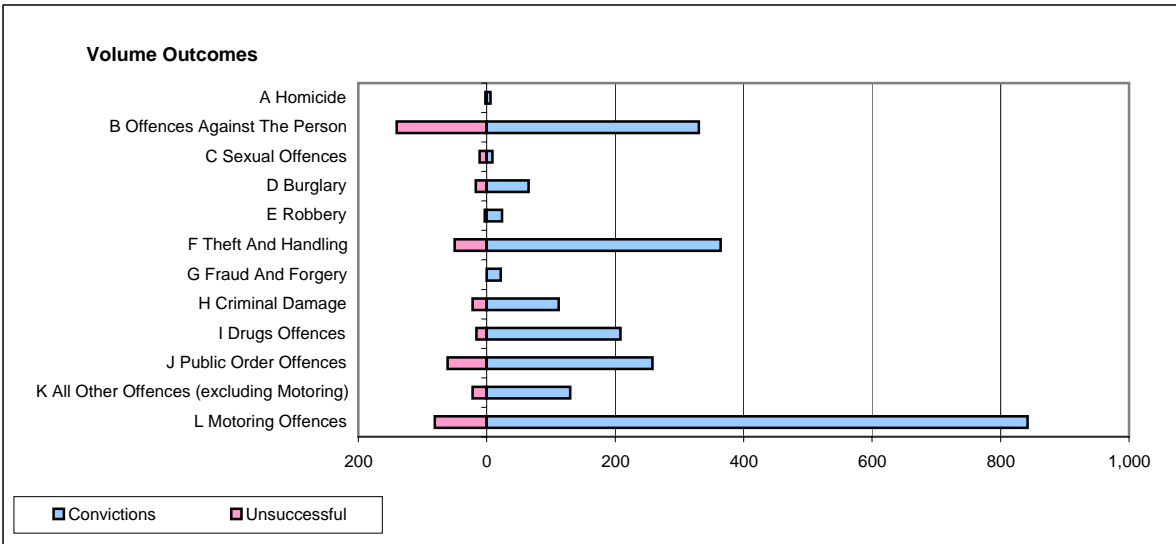
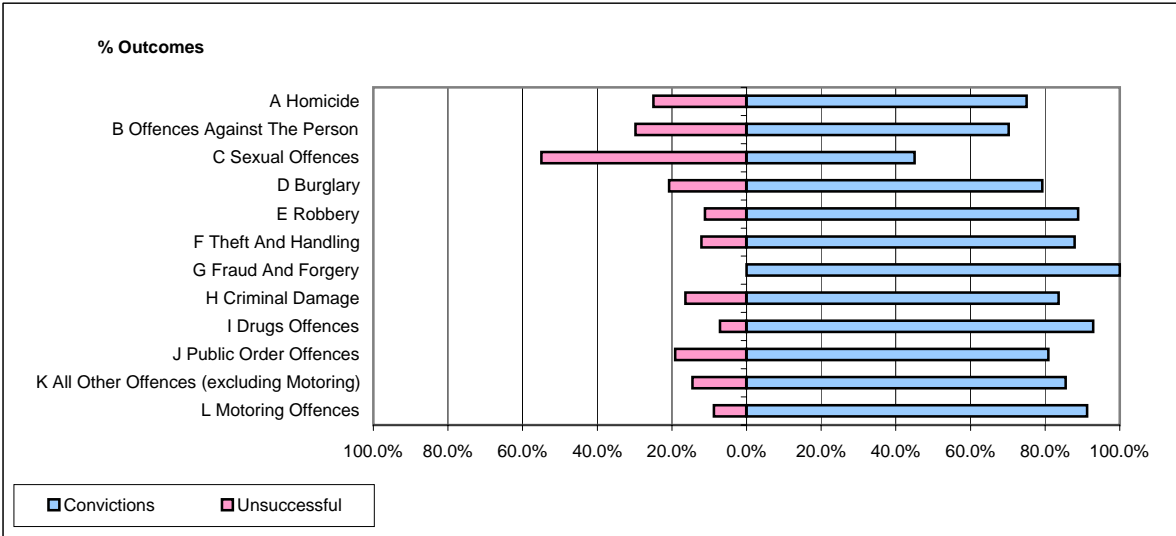


**CPS OUTCOMES BY PRINCIPAL OFFENCE CATEGORY**

**March 2007**

**P24-Merseyside**



	Convictions		Unsuccessful	
	Number of Defendants	%	Number of Defendants	%
<b>A Homicide</b>	6	75.0%	2	25.0%
<b>B Offences Against The Person</b>	330	70.2%	140	29.8%
<b>C Sexual Offences</b>	9	45.0%	11	55.0%
<b>D Burglary</b>	65	79.3%	17	20.7%
<b>E Robbery</b>	24	88.9%	3	11.1%
<b>F Theft And Handling</b>	364	87.9%	50	12.1%
<b>G Fraud And Forgery</b>	22	100.0%	0	0.0%
<b>H Criminal Damage</b>	112	83.6%	22	16.4%
<b>I Drugs Offences</b>	208	92.9%	16	7.1%
<b>J Public Order Offences</b>	258	80.9%	61	19.1%
<b>K All Other Offences (excluding Motoring)</b>	130	85.5%	22	14.5%
<b>L Motoring Offences</b>	842	91.2%	81	8.8%
<b>Admin Finalisations</b>	0	0.0%	54	100.0%
<b>TOTAL</b>	2,370	83.2%	479	16.8%