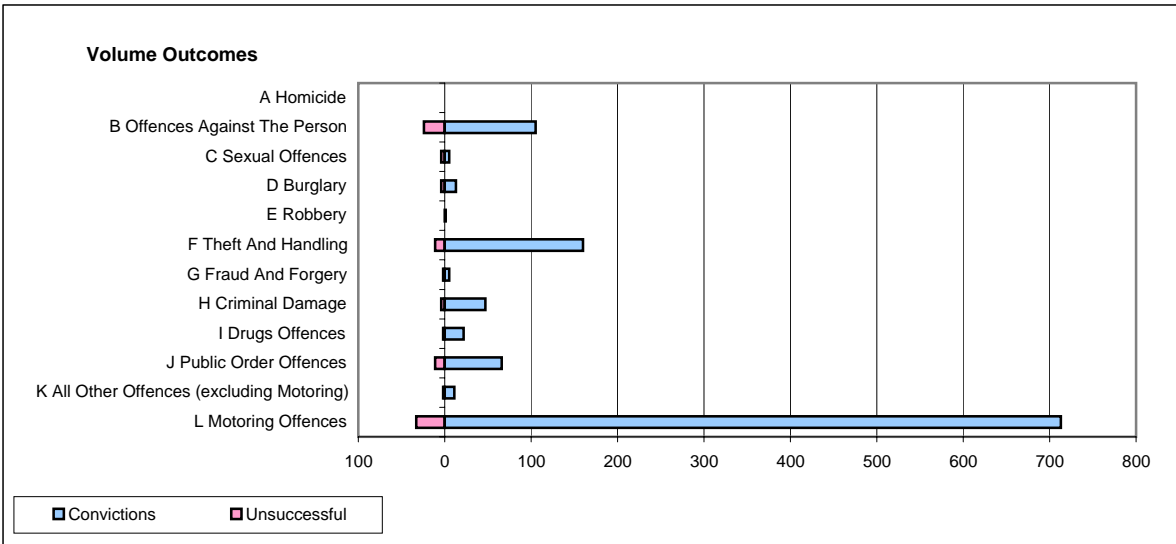
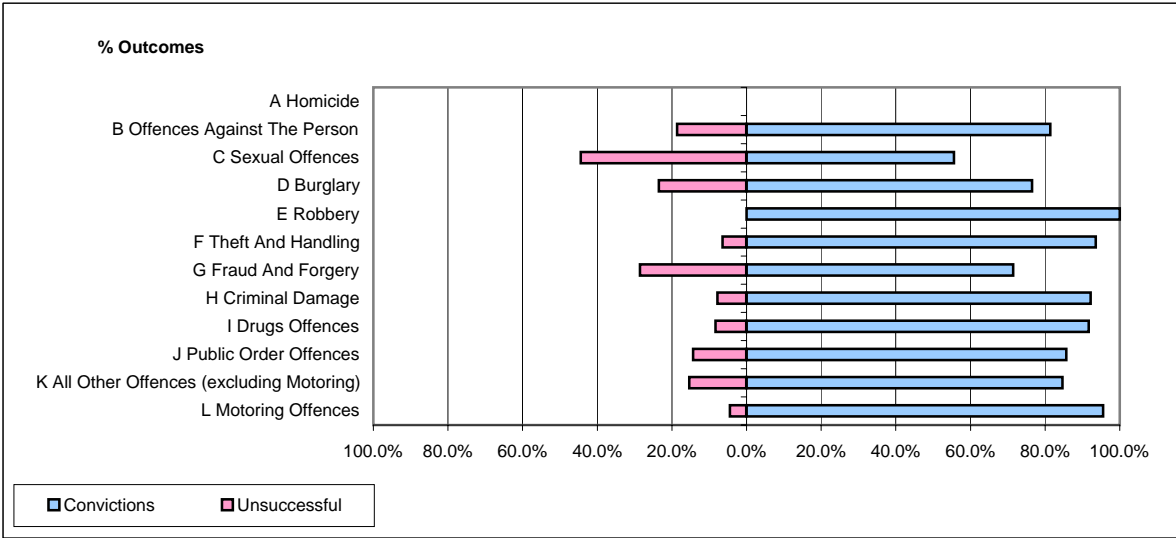


CPS OUTCOMES BY PRINCIPAL OFFENCE CATEGORY

March 2007

P23-Lincolnshire



	Convictions		Unsuccessful	
	Number of Defendants	%	Number of Defendants	%
A Homicide	0	#DIV/0!	0	#DIV/0!
B Offences Against The Person	105	81.4%	24	18.6%
C Sexual Offences	5	55.6%	4	44.4%
D Burglary	13	76.5%	4	23.5%
E Robbery	1	100.0%	0	0.0%
F Theft And Handling	160	93.6%	11	6.4%
G Fraud And Forgery	5	71.4%	2	28.6%
H Criminal Damage	47	92.2%	4	7.8%
I Drugs Offences	22	91.7%	2	8.3%
J Public Order Offences	66	85.7%	11	14.3%
K All Other Offences (excluding Motoring)	11	84.6%	2	15.4%
L Motoring Offences	713	95.6%	33	4.4%
Admin Finalisations	0	0.0%	13	100.0%
TOTAL	1,148	91.3%	110	8.7%