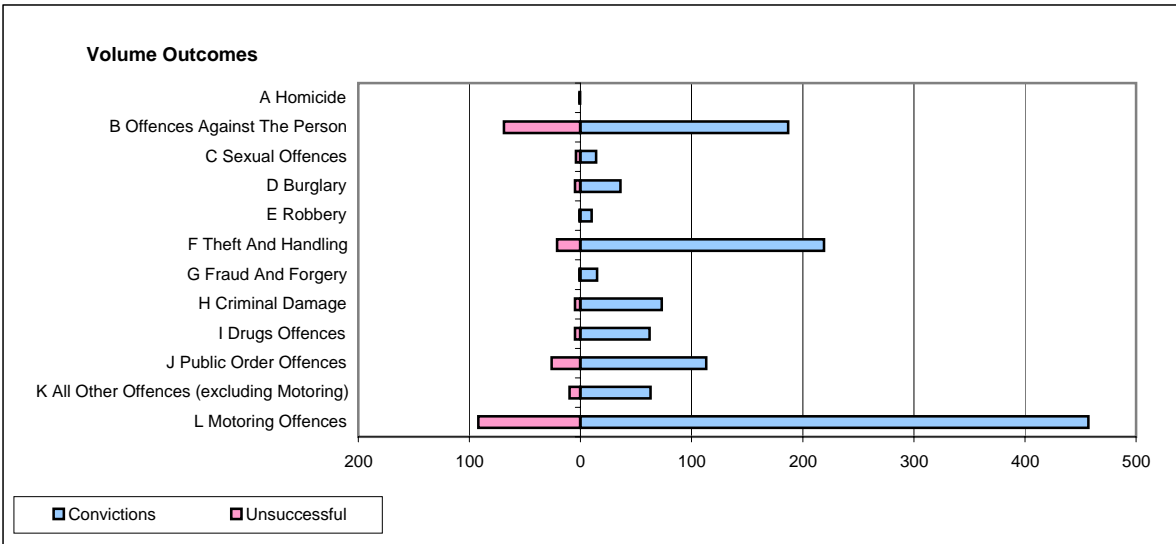
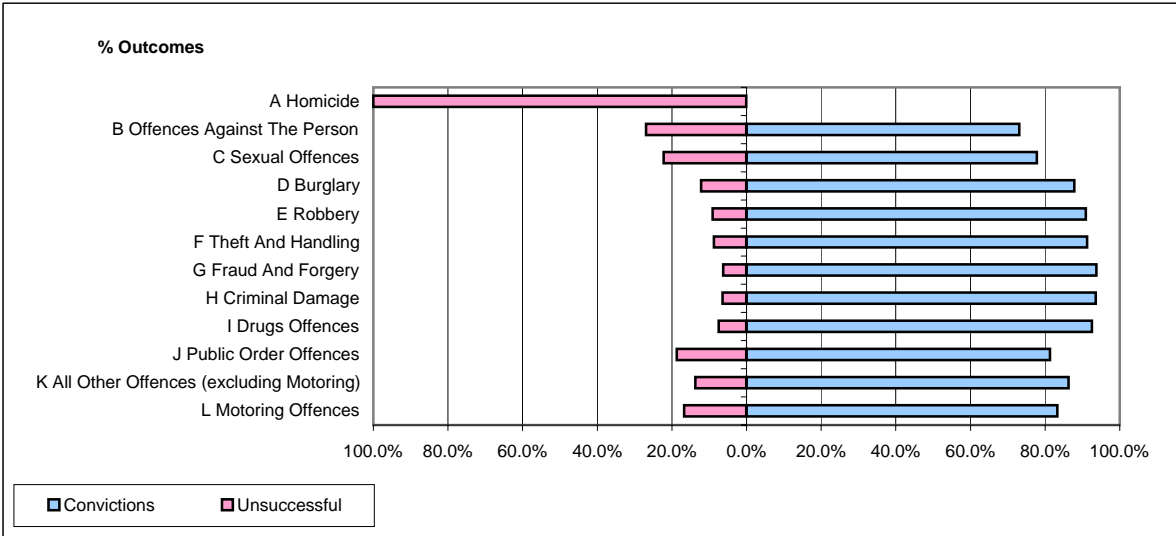


CPS OUTCOMES BY PRINCIPAL OFFENCE CATEGORY

March 2007

P22-Leicestershire



	Convictions		Unsuccessful	
	Number of Defendants	%	Number of Defendants	%
A Homicide	0	0.0%	1	100.0%
B Offences Against The Person	187	73.0%	69	27.0%
C Sexual Offences	14	77.8%	4	22.2%
D Burglary	36	87.8%	5	12.2%
E Robbery	10	90.9%	1	9.1%
F Theft And Handling	219	91.3%	21	8.8%
G Fraud And Forgery	15	93.8%	1	6.3%
H Criminal Damage	73	93.6%	5	6.4%
I Drugs Offences	62	92.5%	5	7.5%
J Public Order Offences	113	81.3%	26	18.7%
K All Other Offences (excluding Motoring)	63	86.3%	10	13.7%
L Motoring Offences	457	83.2%	92	16.8%
Admin Finalisations	0	0.0%	37	100.0%
TOTAL	1,249	81.8%	277	18.2%