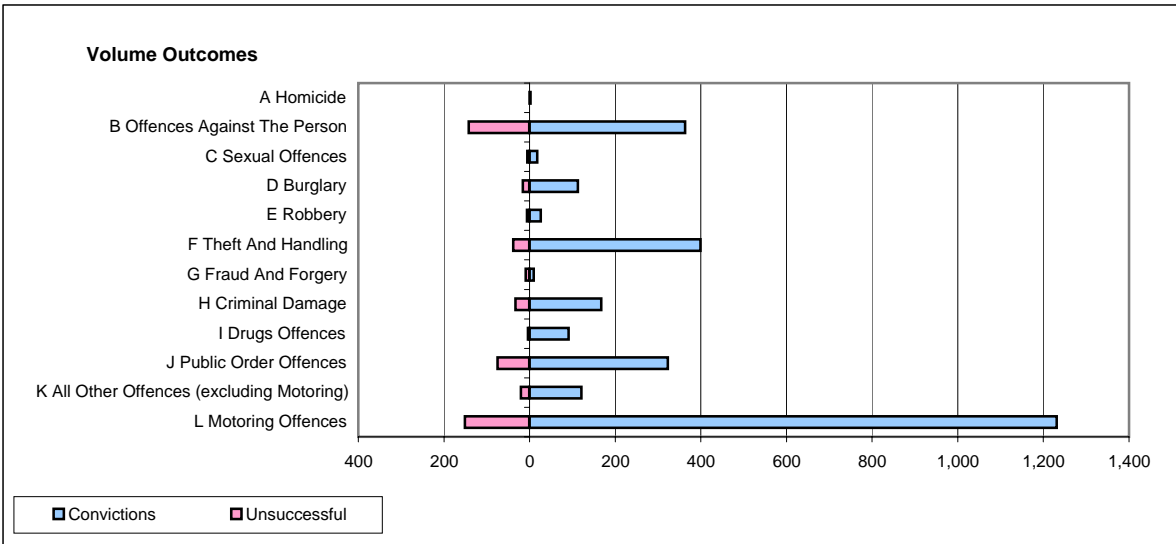
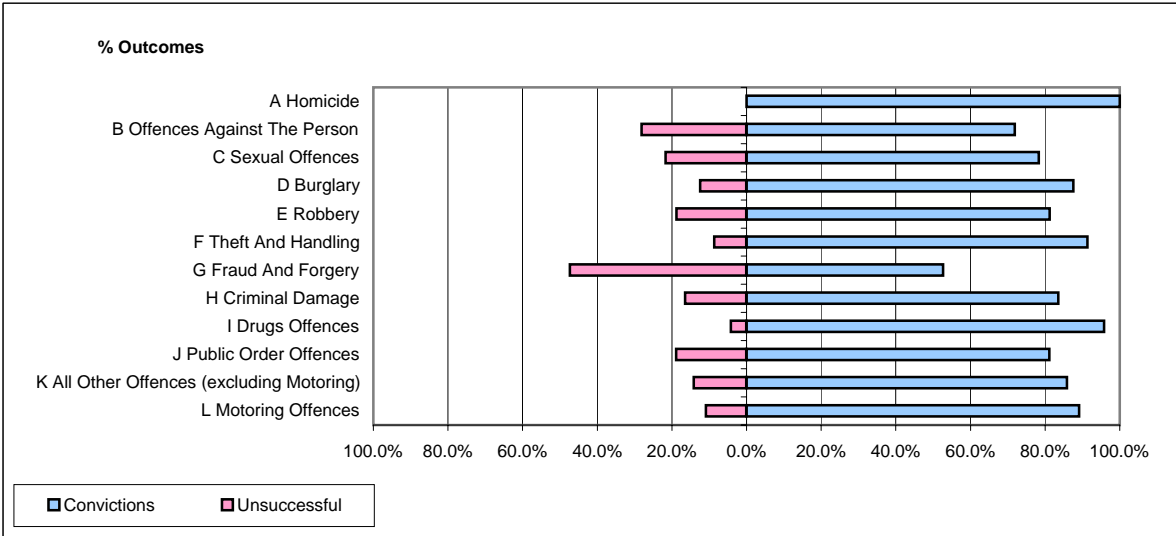


CPS OUTCOMES BY PRINCIPAL OFFENCE CATEGORY

March 2007

P21-Lancashire



	Convictions		Unsuccessful	
	Number of Defendants	%	Number of Defendants	%
A Homicide	2	100.0%	0	0.0%
B Offences Against The Person	363	71.9%	142	28.1%
C Sexual Offences	18	78.3%	5	21.7%
D Burglary	113	87.6%	16	12.4%
E Robbery	26	81.3%	6	18.8%
F Theft And Handling	399	91.3%	38	8.7%
G Fraud And Forgery	10	52.6%	9	47.4%
H Criminal Damage	167	83.5%	33	16.5%
I Drugs Offences	91	95.8%	4	4.2%
J Public Order Offences	323	81.2%	75	18.8%
K All Other Offences (excluding Motoring)	121	85.8%	20	14.2%
L Motoring Offences	1,231	89.1%	151	10.9%
Admin Finalisations	0	0.0%	35	100.0%
TOTAL	2,864	84.3%	534	15.7%