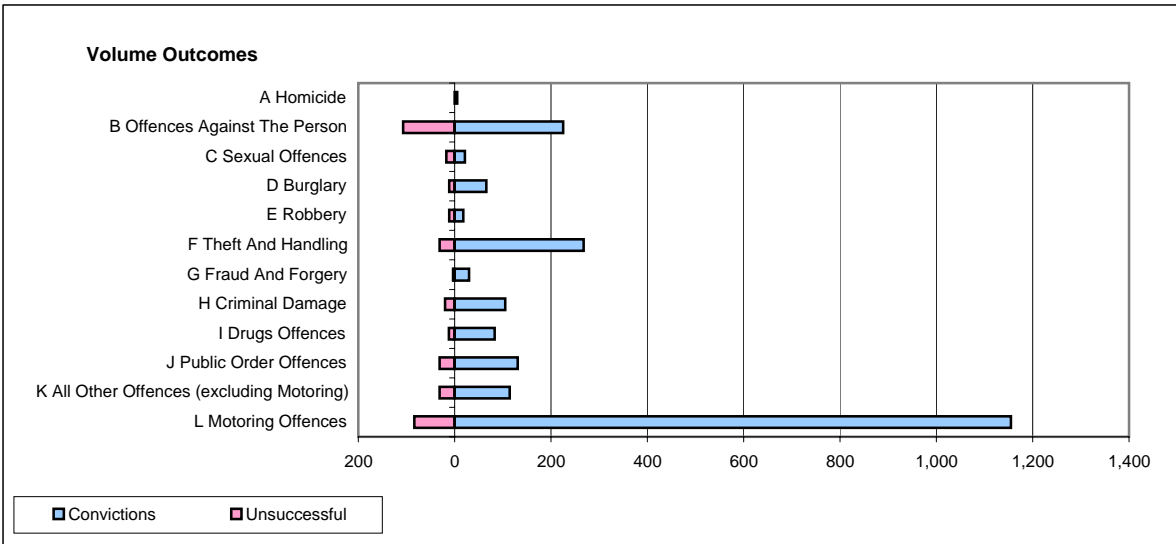
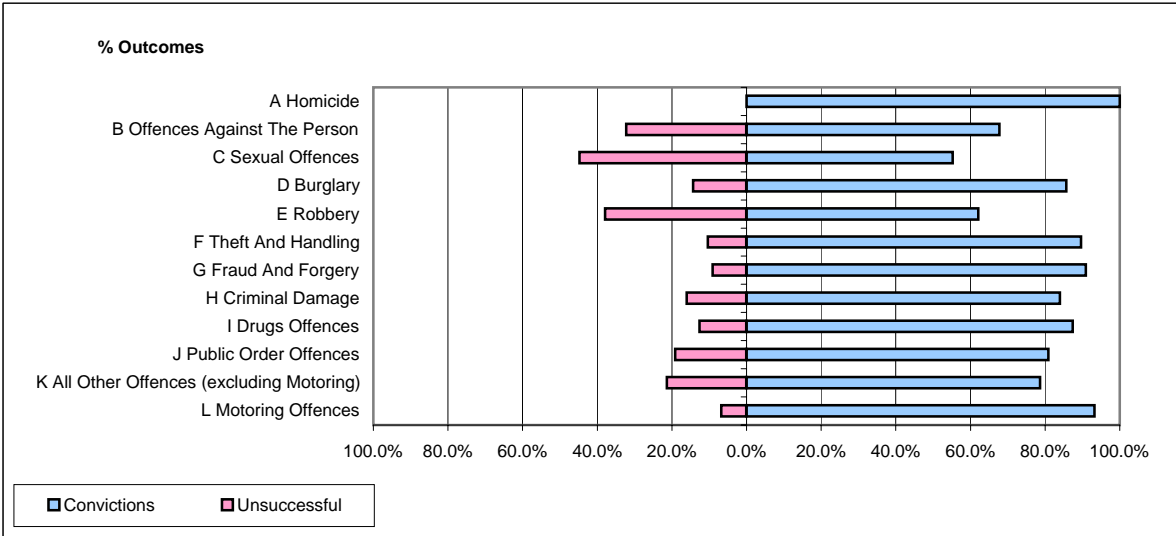


CPS OUTCOMES BY PRINCIPAL OFFENCE CATEGORY

March 2007

P20-Kent



	Convictions		Unsuccessful	
	Number of Defendants	%	Number of Defendants	%
A Homicide	5	100.0%	0	0.0%
B Offences Against The Person	225	67.8%	107	32.2%
C Sexual Offences	21	55.3%	17	44.7%
D Burglary	66	85.7%	11	14.3%
E Robbery	18	62.1%	11	37.9%
F Theft And Handling	268	89.6%	31	10.4%
G Fraud And Forgery	30	90.9%	3	9.1%
H Criminal Damage	105	84.0%	20	16.0%
I Drugs Offences	83	87.4%	12	12.6%
J Public Order Offences	131	80.9%	31	19.1%
K All Other Offences (excluding Motoring)	114	78.6%	31	21.4%
L Motoring Offences	1,155	93.2%	84	6.8%
Admin Finalisations	0	0.0%	31	100.0%
TOTAL	2,221	85.1%	389	14.9%