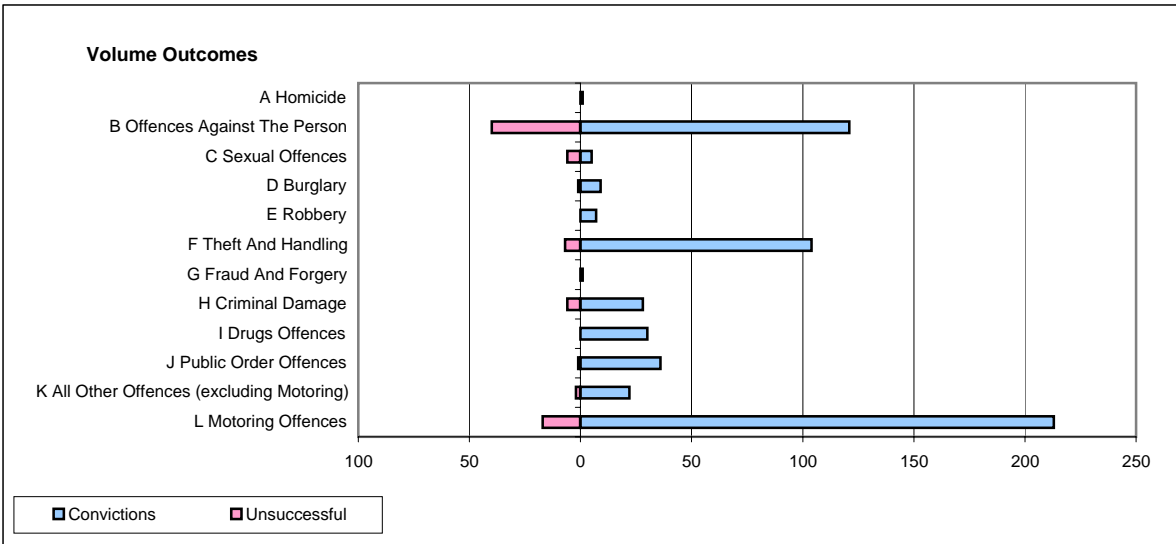
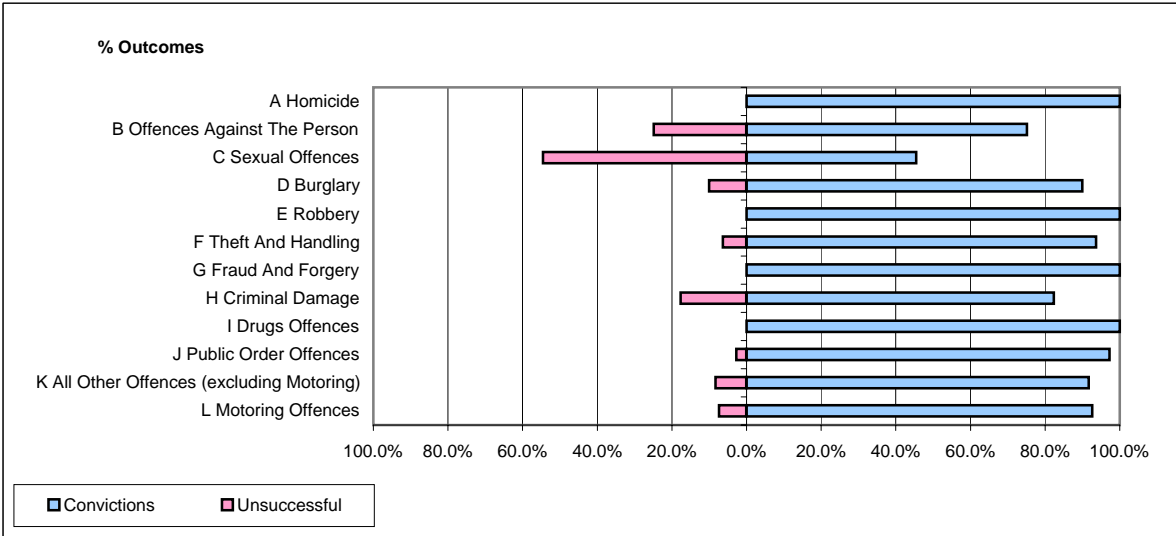


**CPS OUTCOMES BY PRINCIPAL OFFENCE CATEGORY**

**March 2007**

**P14-Gloucestershire**



	Convictions		Unsuccessful	
	Number of Defendants	%	Number of Defendants	%
<b>A Homicide</b>	1	100.0%	0	0.0%
<b>B Offences Against The Person</b>	121	75.2%	40	24.8%
<b>C Sexual Offences</b>	5	45.5%	6	54.5%
<b>D Burglary</b>	9	90.0%	1	10.0%
<b>E Robbery</b>	7	100.0%	0	0.0%
<b>F Theft And Handling</b>	104	93.7%	7	6.3%
<b>G Fraud And Forgery</b>	1	100.0%	0	0.0%
<b>H Criminal Damage</b>	28	82.4%	6	17.6%
<b>I Drugs Offences</b>	30	100.0%	0	0.0%
<b>J Public Order Offences</b>	36	97.3%	1	2.7%
<b>K All Other Offences (excluding Motoring)</b>	22	91.7%	2	8.3%
<b>L Motoring Offences</b>	213	92.6%	17	7.4%
<b>Admin Finalisations</b>	0	0.0%	6	100.0%
<b>TOTAL</b>	<b>577</b>	<b>87.0%</b>	<b>86</b>	<b>13.0%</b>