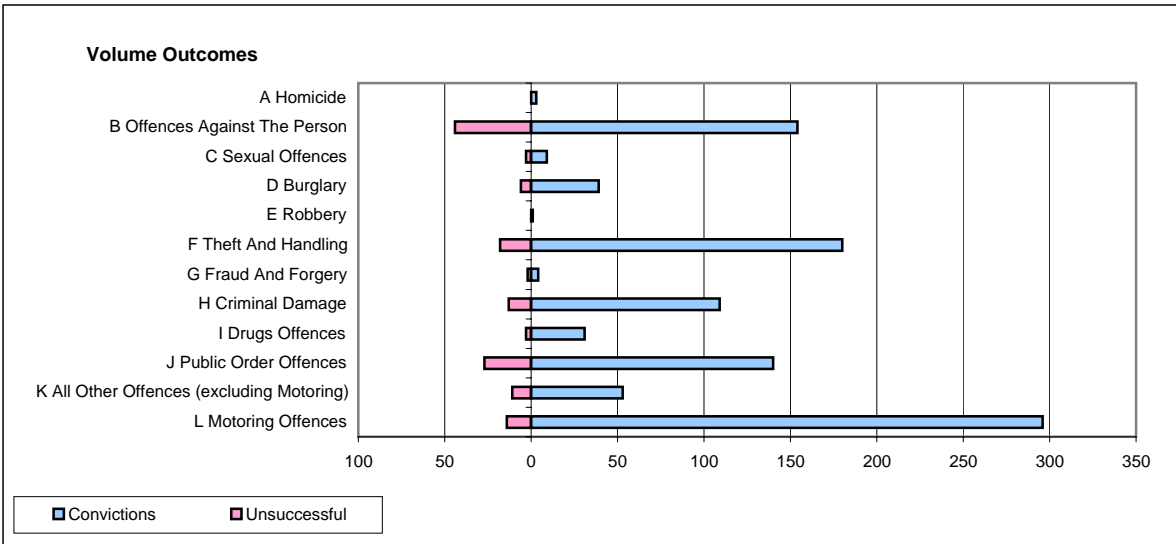
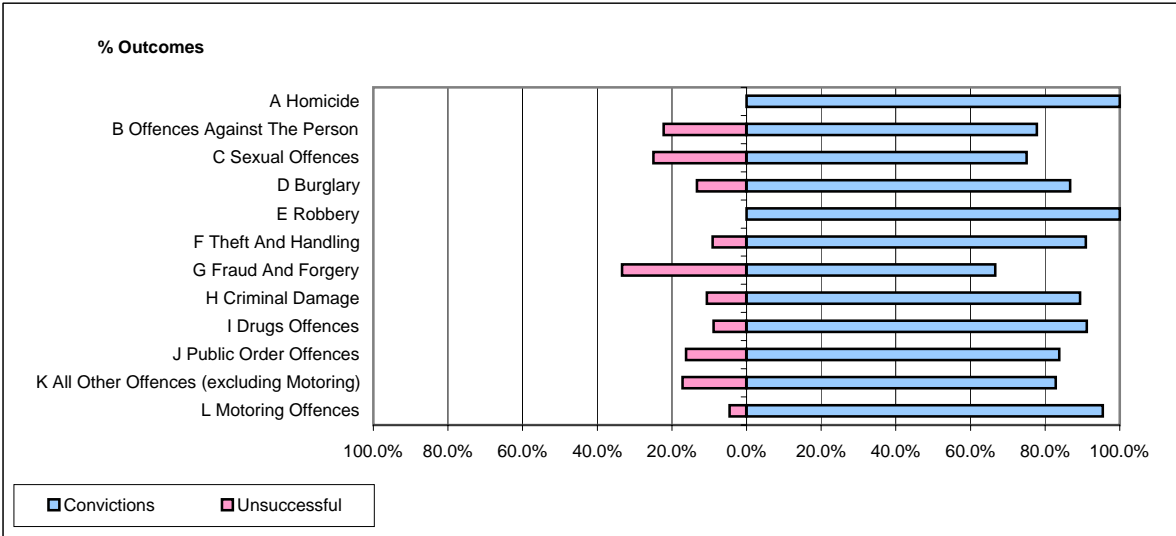


CPS OUTCOMES BY PRINCIPAL OFFENCE CATEGORY

March 2007

P11-Durham



	Convictions		Unsuccessful	
	Number of Defendants	%	Number of Defendants	%
A Homicide	3	100.0%	0	0.0%
B Offences Against The Person	154	77.8%	44	22.2%
C Sexual Offences	9	75.0%	3	25.0%
D Burglary	39	86.7%	6	13.3%
E Robbery	1	100.0%	0	0.0%
F Theft And Handling	180	90.9%	18	9.1%
G Fraud And Forgery	4	66.7%	2	33.3%
H Criminal Damage	109	89.3%	13	10.7%
I Drugs Offences	31	91.2%	3	8.8%
J Public Order Offences	140	83.8%	27	16.2%
K All Other Offences (excluding Motoring)	53	82.8%	11	17.2%
L Motoring Offences	296	95.5%	14	4.5%
Admin Finalisations	0	0.0%	8	100.0%
TOTAL	1,019	87.2%	149	12.8%