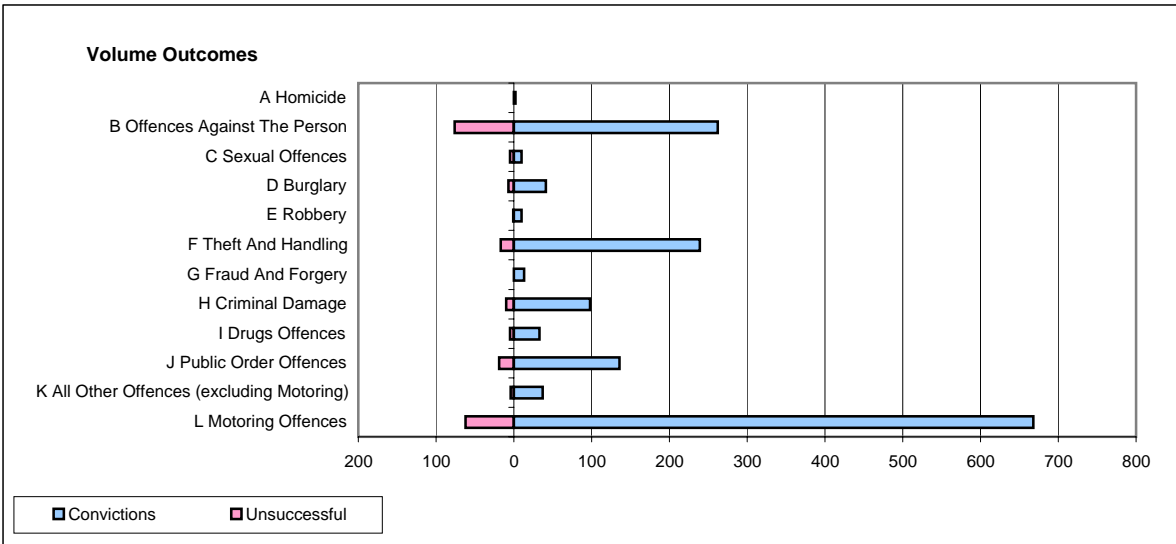
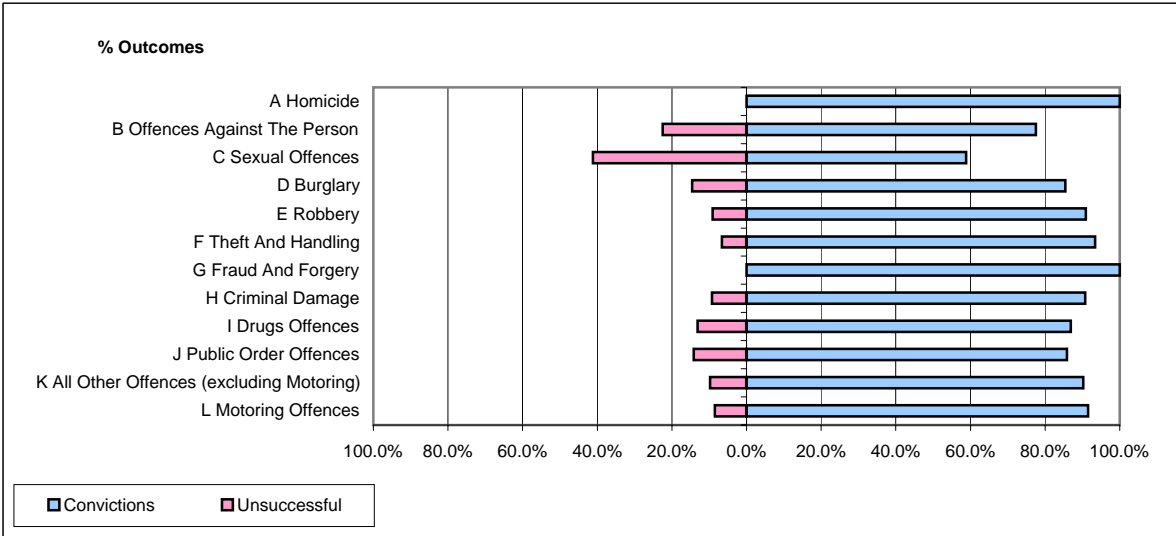


CPS OUTCOMES BY PRINCIPAL OFFENCE CATEGORY

March 2007

P04-Cheshire



	Convictions		Unsuccessful	
	Number of Defendants	%	Number of Defendants	%
A Homicide	2	100.0%	0	0.0%
B Offences Against The Person	262	77.5%	76	22.5%
C Sexual Offences	10	58.8%	5	41.2%
D Burglary	41	85.4%	7	14.6%
E Robbery	10	90.9%	1	9.1%
F Theft And Handling	239	93.4%	17	6.6%
G Fraud And Forgery	13	100.0%	0	0.0%
H Criminal Damage	98	90.7%	10	9.3%
I Drugs Offences	33	86.8%	5	13.2%
J Public Order Offences	136	85.8%	19	14.2%
K All Other Offences (excluding Motoring)	37	90.2%	4	9.8%
L Motoring Offences	668	91.5%	62	8.5%
Admin Finalisations	0	0.0%	19	100.0%
TOTAL	1,549	87.3%	225	12.7%