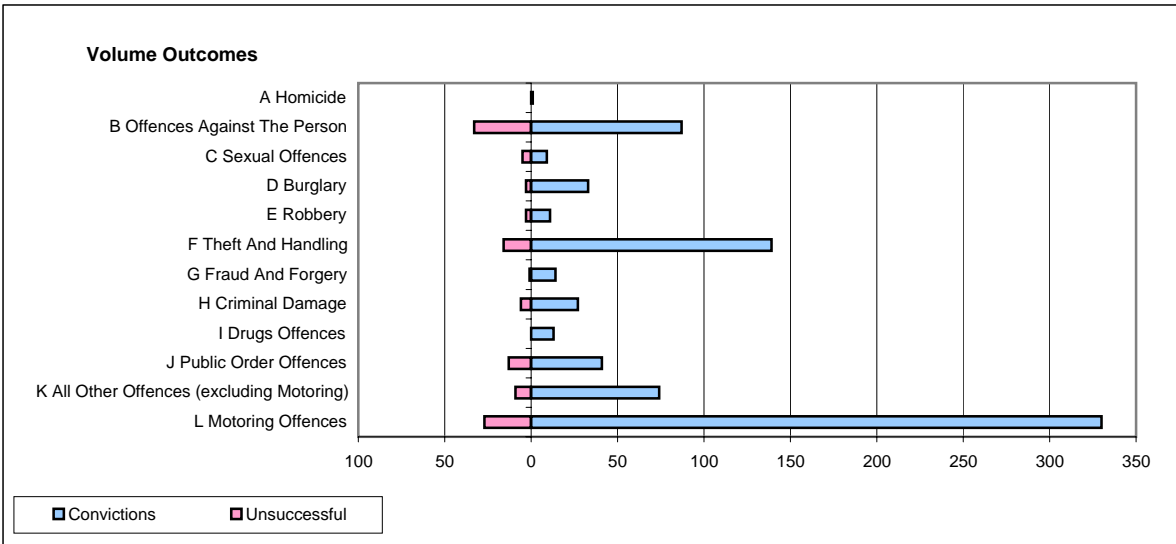
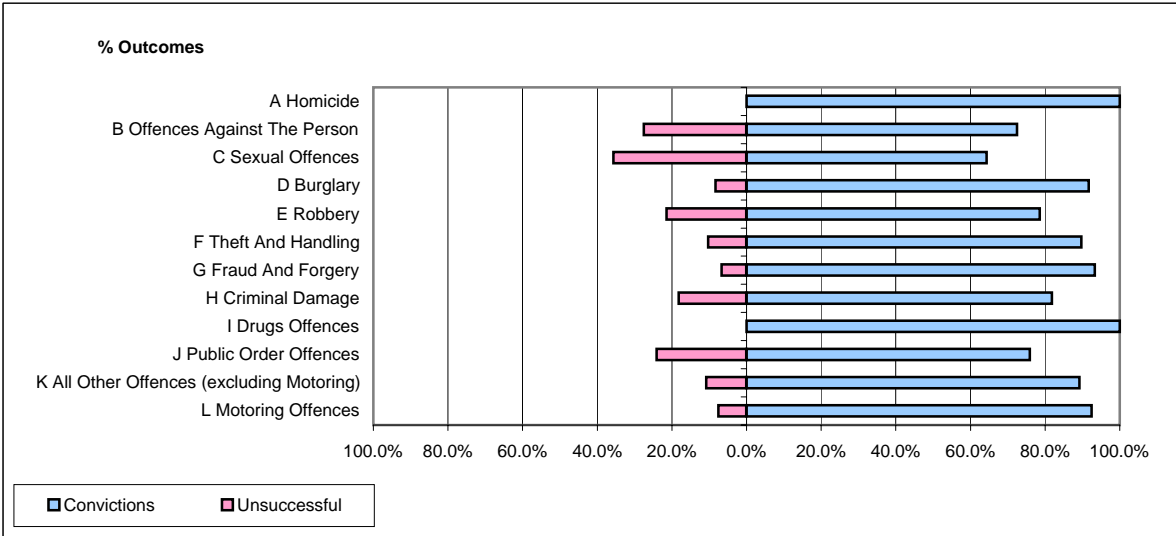


CPS OUTCOMES BY PRINCIPAL OFFENCE CATEGORY

March 2007

P02-Bedfordshire



	Convictions		Unsuccessful	
	Number of Defendants	%	Number of Defendants	%
A Homicide	1	100.0%	0	0.0%
B Offences Against The Person	87	72.5%	33	27.5%
C Sexual Offences	9	64.3%	5	35.7%
D Burglary	33	91.7%	3	8.3%
E Robbery	11	78.6%	3	21.4%
F Theft And Handling	139	89.7%	16	10.3%
G Fraud And Forgery	14	93.3%	1	6.7%
H Criminal Damage	27	81.8%	6	18.2%
I Drugs Offences	13	100.0%	0	0.0%
J Public Order Offences	41	75.9%	13	24.1%
K All Other Offences (excluding Motoring)	74	89.2%	9	10.8%
L Motoring Offences	330	92.4%	27	7.6%
Admin Finalisations	0	0.0%	12	100.0%
TOTAL	779	85.9%	128	14.1%