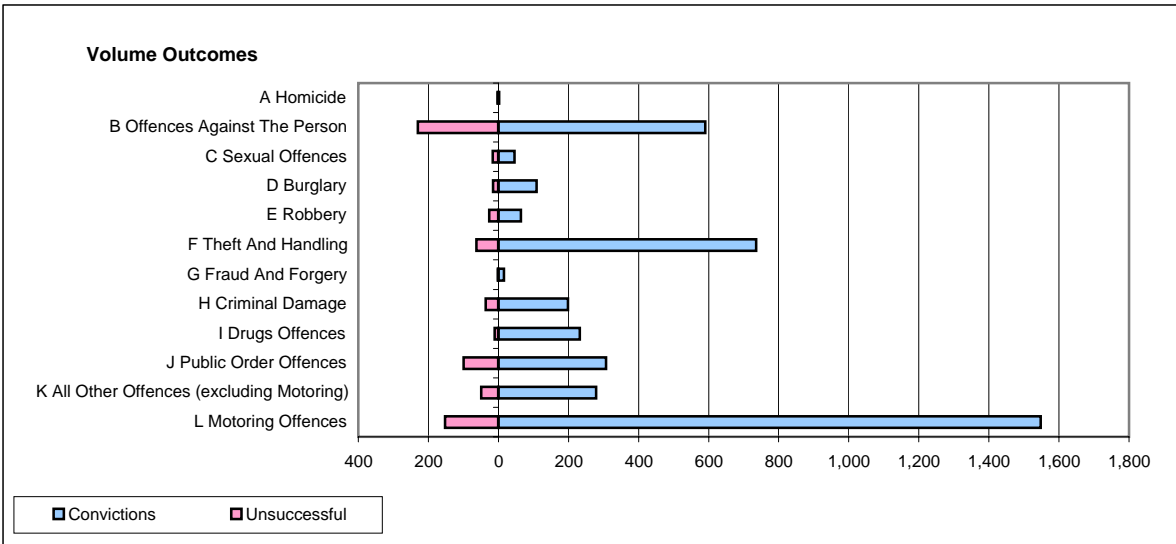
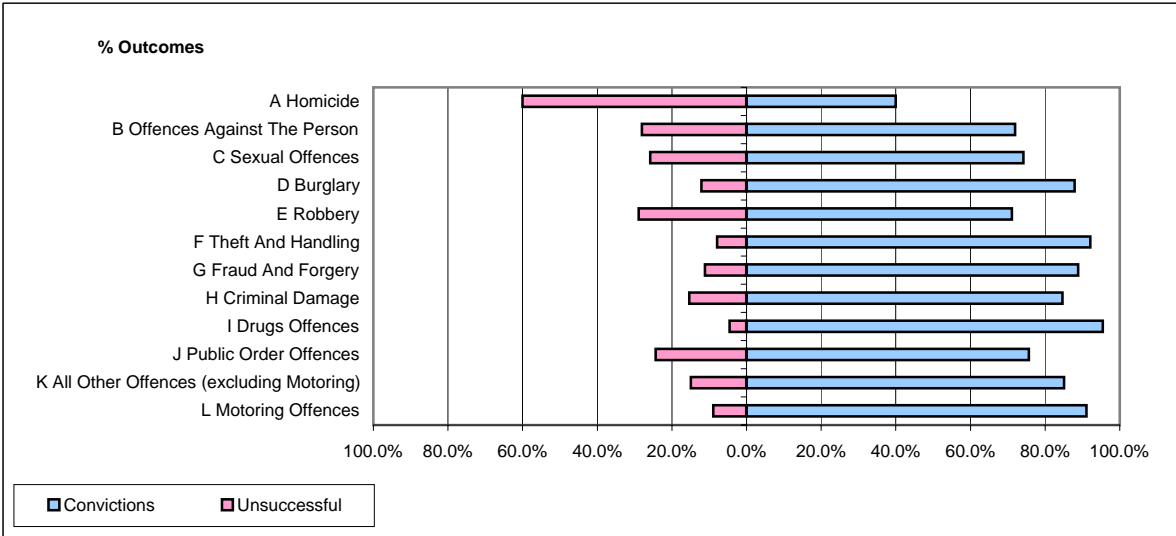


**CPS OUTCOMES BY PRINCIPAL OFFENCE CATEGORY**

**February 2007**

**P41-WestMidlands**



	Convictions		Unsuccessful	
	Number of Defendants	%	Number of Defendants	%
<b>A Homicide</b>	<b>2</b>	<b>40.0%</b>	<b>3</b>	<b>60.0%</b>
<b>B Offences Against The Person</b>	<b>590</b>	<b>72.0%</b>	<b>230</b>	<b>28.0%</b>
<b>C Sexual Offences</b>	<b>46</b>	<b>74.2%</b>	<b>16</b>	<b>25.8%</b>
<b>D Burglary</b>	<b>109</b>	<b>87.9%</b>	<b>15</b>	<b>12.1%</b>
<b>E Robbery</b>	<b>64</b>	<b>71.1%</b>	<b>26</b>	<b>28.9%</b>
<b>F Theft And Handling</b>	<b>736</b>	<b>92.1%</b>	<b>63</b>	<b>7.9%</b>
<b>G Fraud And Forgery</b>	<b>16</b>	<b>88.9%</b>	<b>2</b>	<b>11.1%</b>
<b>H Criminal Damage</b>	<b>198</b>	<b>84.6%</b>	<b>36</b>	<b>15.4%</b>
<b>I Drugs Offences</b>	<b>232</b>	<b>95.5%</b>	<b>11</b>	<b>4.5%</b>
<b>J Public Order Offences</b>	<b>307</b>	<b>75.6%</b>	<b>99</b>	<b>24.4%</b>
<b>K All Other Offences (excluding Motoring)</b>	<b>279</b>	<b>85.1%</b>	<b>49</b>	<b>14.9%</b>
<b>L Motoring Offences</b>	<b>1,548</b>	<b>91.1%</b>	<b>152</b>	<b>8.9%</b>
<b>Admin Finalisations</b>	<b>0</b>	<b>0.0%</b>	<b>99</b>	<b>100.0%</b>
<b>TOTAL</b>	<b>4,127</b>	<b>83.7%</b>	<b>801</b>	<b>16.3%</b>