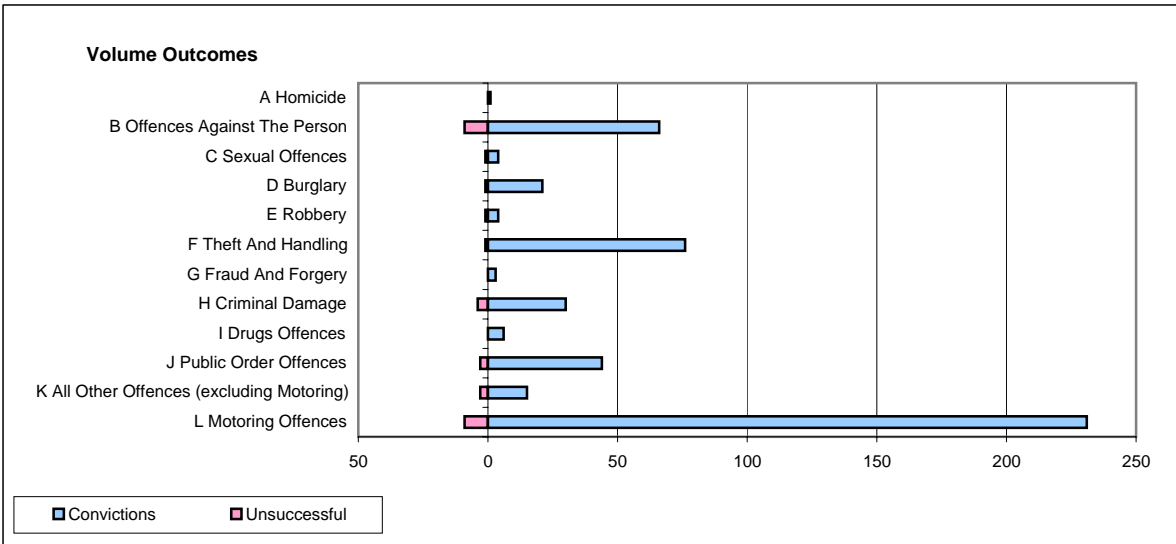
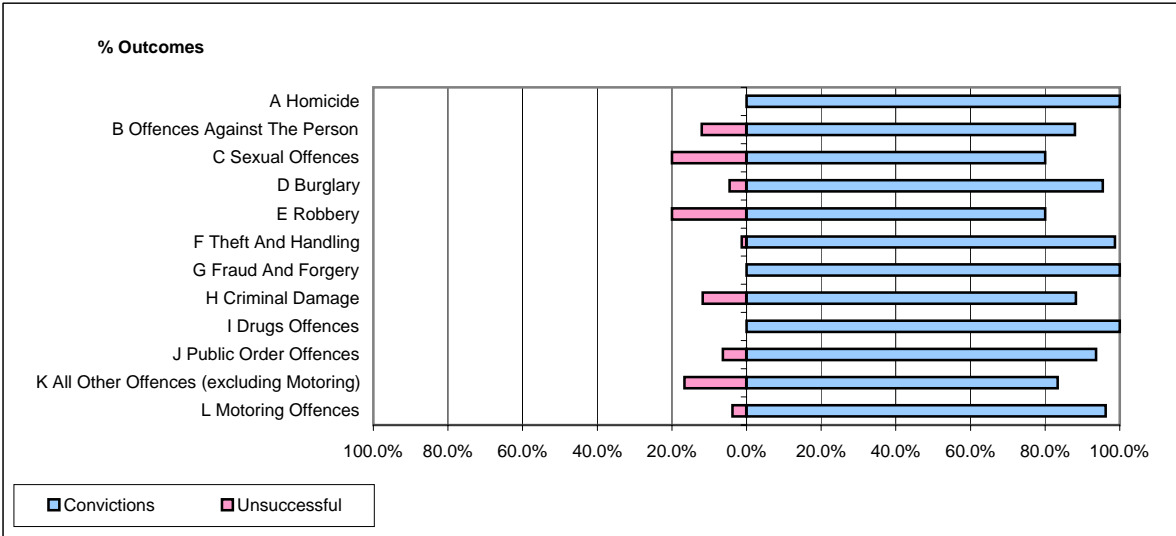


CPS OUTCOMES BY PRINCIPAL OFFENCE CATEGORY

February 2007

P39-Warwickshire



	Convictions		Unsuccessful	
	Number of Defendants	%	Number of Defendants	%
A Homicide	1	100.0%	0	0.0%
B Offences Against The Person	66	88.0%	9	12.0%
C Sexual Offences	4	80.0%	1	20.0%
D Burglary	21	95.5%	1	4.5%
E Robbery	4	80.0%	1	20.0%
F Theft And Handling	76	98.7%	1	1.3%
G Fraud And Forgery	3	100.0%	0	0.0%
H Criminal Damage	30	88.2%	4	11.8%
I Drugs Offences	6	100.0%	0	0.0%
J Public Order Offences	44	93.6%	3	6.4%
K All Other Offences (excluding Motoring)	15	83.3%	3	16.7%
L Motoring Offences	231	96.3%	9	3.8%
Admin Finalisations	0	0.0%	13	100.0%
TOTAL	501	91.8%	45	8.2%