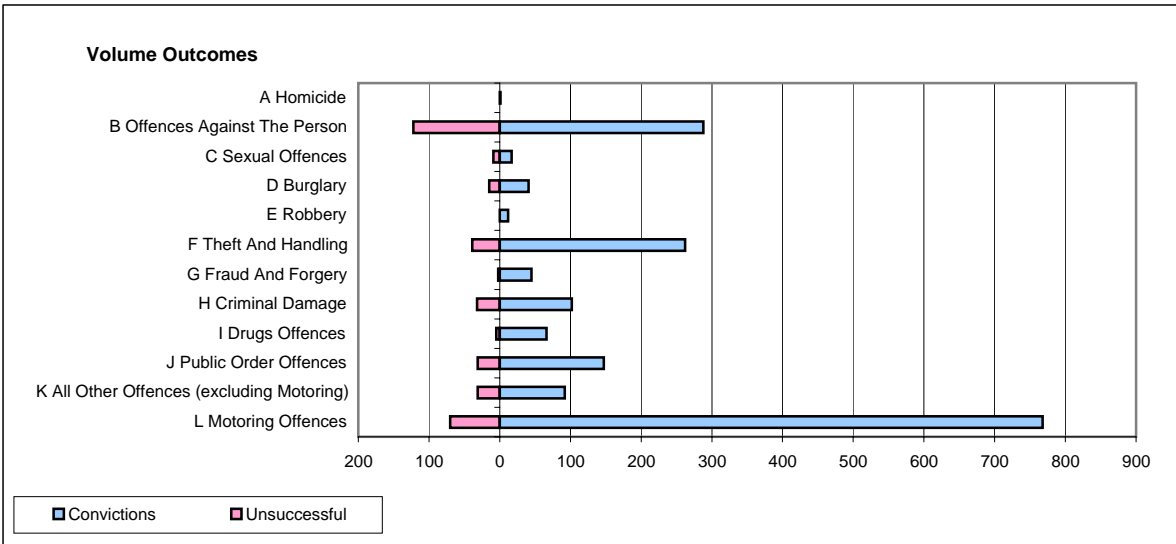
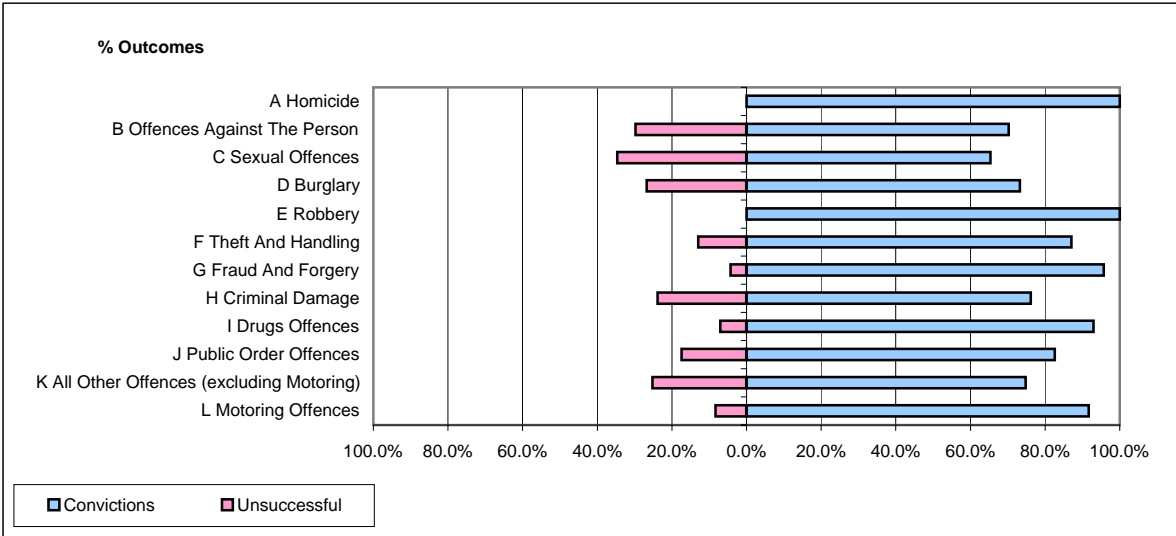


**CPS OUTCOMES BY PRINCIPAL OFFENCE CATEGORY**

**February 2007**

**P37-Sussex**



	Convictions		Unsuccessful	
	Number of Defendants	%	Number of Defendants	%
<b>A Homicide</b>	<b>1</b>	<b>100.0%</b>	<b>0</b>	<b>0.0%</b>
<b>B Offences Against The Person</b>	<b>288</b>	<b>70.2%</b>	<b>122</b>	<b>29.8%</b>
<b>C Sexual Offences</b>	<b>17</b>	<b>65.4%</b>	<b>9</b>	<b>34.6%</b>
<b>D Burglary</b>	<b>41</b>	<b>73.2%</b>	<b>15</b>	<b>26.8%</b>
<b>E Robbery</b>	<b>12</b>	<b>100.0%</b>	<b>0</b>	<b>0.0%</b>
<b>F Theft And Handling</b>	<b>262</b>	<b>87.0%</b>	<b>39</b>	<b>13.0%</b>
<b>G Fraud And Forgery</b>	<b>45</b>	<b>95.7%</b>	<b>2</b>	<b>4.3%</b>
<b>H Criminal Damage</b>	<b>102</b>	<b>76.1%</b>	<b>32</b>	<b>23.9%</b>
<b>I Drugs Offences</b>	<b>66</b>	<b>93.0%</b>	<b>5</b>	<b>7.0%</b>
<b>J Public Order Offences</b>	<b>147</b>	<b>82.6%</b>	<b>31</b>	<b>17.4%</b>
<b>K All Other Offences (excluding Motoring)</b>	<b>92</b>	<b>74.8%</b>	<b>31</b>	<b>25.2%</b>
<b>L Motoring Offences</b>	<b>768</b>	<b>91.6%</b>	<b>70</b>	<b>8.4%</b>
<b>Admin Finalisations</b>	<b>0</b>	<b>0.0%</b>	<b>37</b>	<b>100.0%</b>
<b>TOTAL</b>	<b>1,841</b>	<b>82.4%</b>	<b>393</b>	<b>17.6%</b>