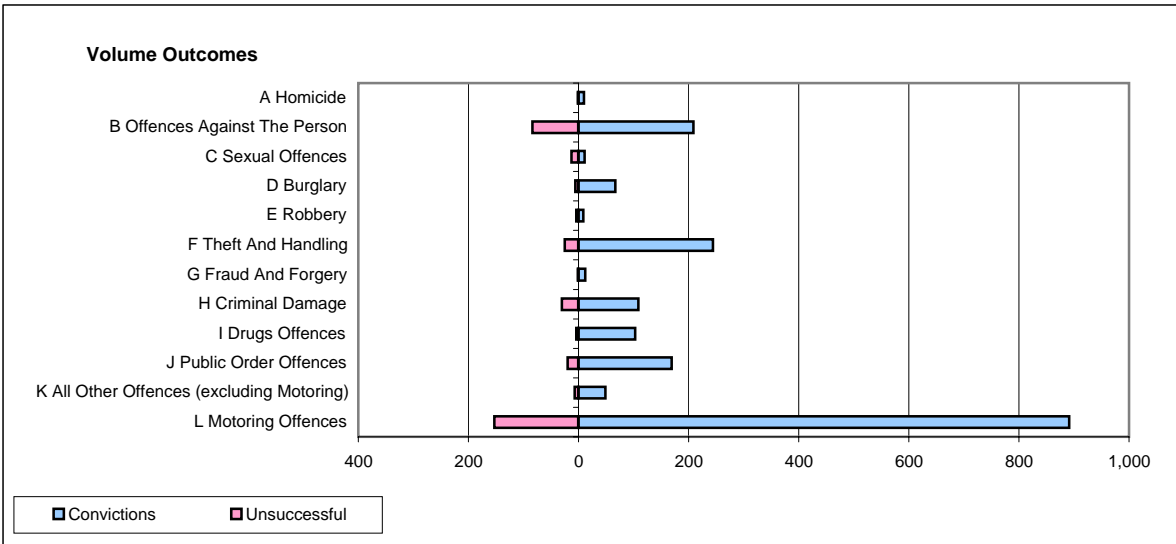
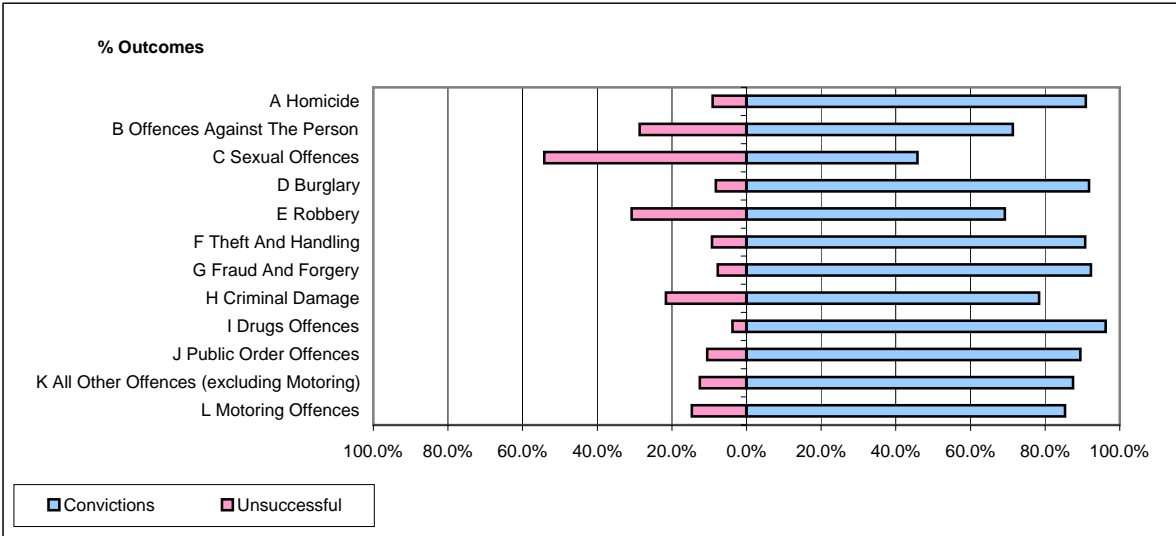


CPS OUTCOMES BY PRINCIPAL OFFENCE CATEGORY

February 2007

P32-SouthWales



	Convictions		Unsuccessful	
	Number of Defendants	%	Number of Defendants	%
A Homicide	10	90.9%	1	9.1%
B Offences Against The Person	209	71.3%	84	28.7%
C Sexual Offences	11	45.8%	13	54.2%
D Burglary	67	91.8%	6	8.2%
E Robbery	9	69.2%	4	30.8%
F Theft And Handling	244	90.7%	25	9.3%
G Fraud And Forgery	12	92.3%	1	7.7%
H Criminal Damage	109	78.4%	30	21.6%
I Drugs Offences	103	96.3%	4	3.7%
J Public Order Offences	169	89.4%	20	10.6%
K All Other Offences (excluding Motoring)	49	87.5%	7	12.5%
L Motoring Offences	891	85.3%	153	14.7%
Admin Finalisations	0	0.0%	89	100.0%
TOTAL	1,883	81.2%	437	18.8%