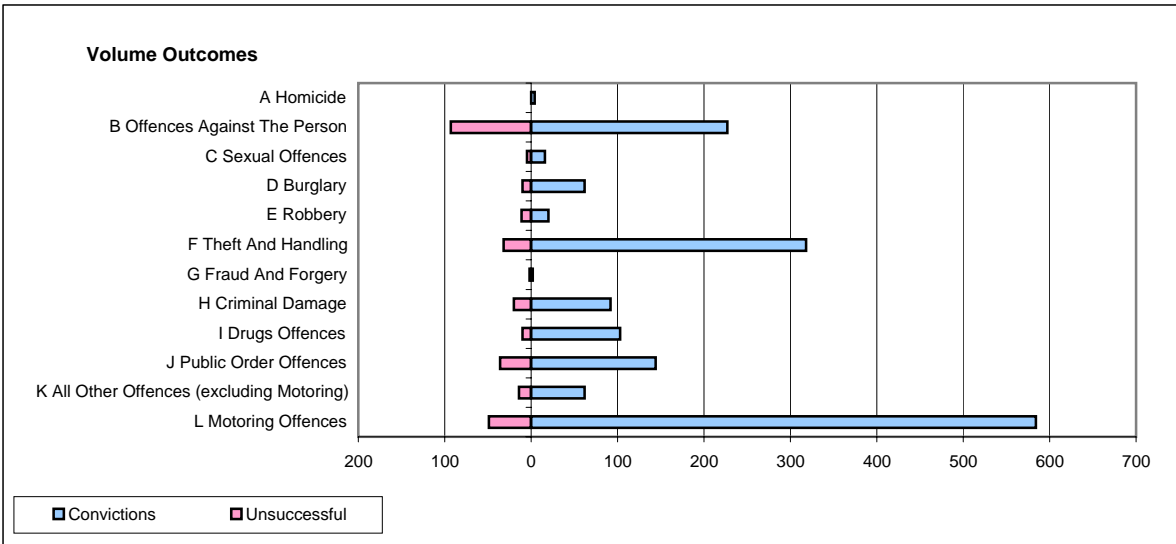
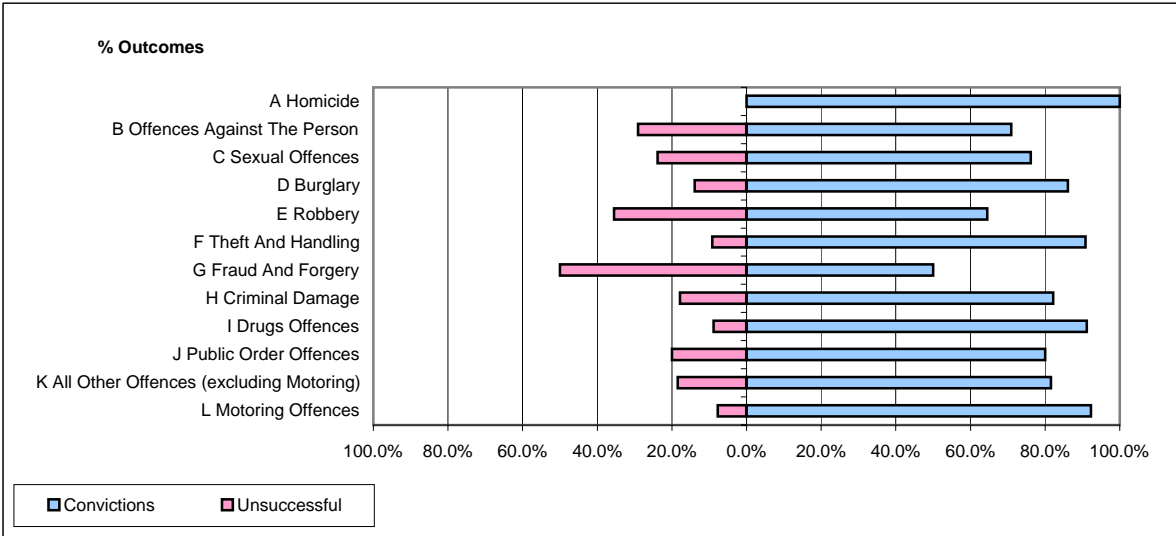


**CPS OUTCOMES BY PRINCIPAL OFFENCE CATEGORY**

**February 2007**

**P31-Nottinghamshire**



	Convictions		Unsuccessful	
	Number of Defendants	%	Number of Defendants	%
<b>A Homicide</b>	<b>4</b>	<b>100.0%</b>	<b>0</b>	<b>0.0%</b>
<b>B Offences Against The Person</b>	<b>227</b>	<b>70.9%</b>	<b>93</b>	<b>29.1%</b>
<b>C Sexual Offences</b>	<b>16</b>	<b>76.2%</b>	<b>5</b>	<b>23.8%</b>
<b>D Burglary</b>	<b>62</b>	<b>86.1%</b>	<b>10</b>	<b>13.9%</b>
<b>E Robbery</b>	<b>20</b>	<b>64.5%</b>	<b>11</b>	<b>35.5%</b>
<b>F Theft And Handling</b>	<b>318</b>	<b>90.9%</b>	<b>32</b>	<b>9.1%</b>
<b>G Fraud And Forgery</b>	<b>2</b>	<b>50.0%</b>	<b>2</b>	<b>50.0%</b>
<b>H Criminal Damage</b>	<b>92</b>	<b>82.1%</b>	<b>20</b>	<b>17.9%</b>
<b>I Drugs Offences</b>	<b>103</b>	<b>91.2%</b>	<b>10</b>	<b>8.8%</b>
<b>J Public Order Offences</b>	<b>144</b>	<b>80.0%</b>	<b>36</b>	<b>20.0%</b>
<b>K All Other Offences (excluding Motoring)</b>	<b>62</b>	<b>81.6%</b>	<b>14</b>	<b>18.4%</b>
<b>L Motoring Offences</b>	<b>584</b>	<b>92.3%</b>	<b>49</b>	<b>7.7%</b>
<b>Admin Finalisations</b>	<b>0</b>	<b>0.0%</b>	<b>24</b>	<b>100.0%</b>
<b>TOTAL</b>	<b>1,634</b>	<b>84.2%</b>	<b>306</b>	<b>15.8%</b>