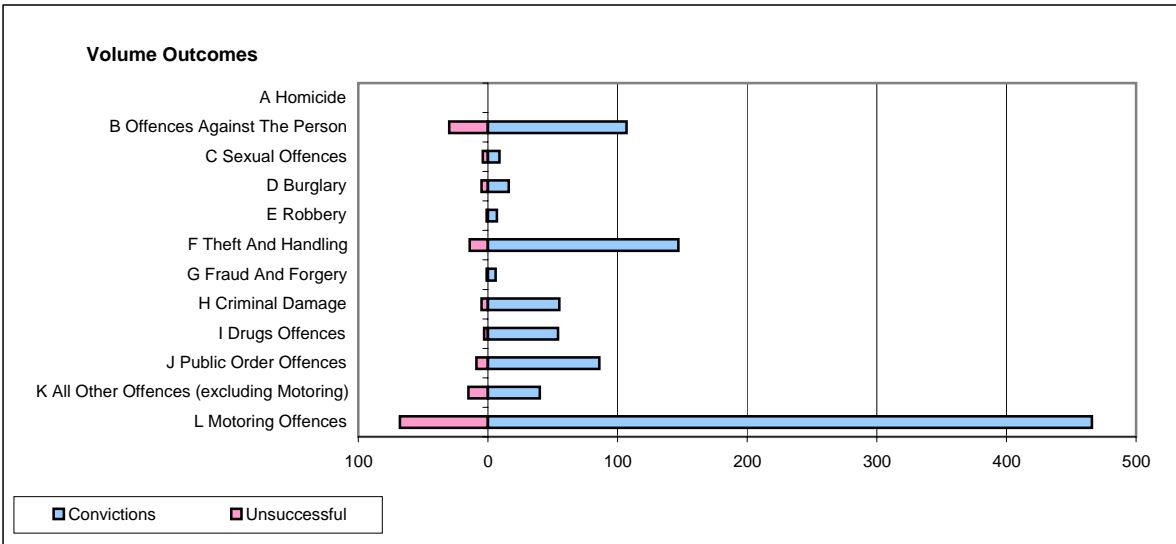
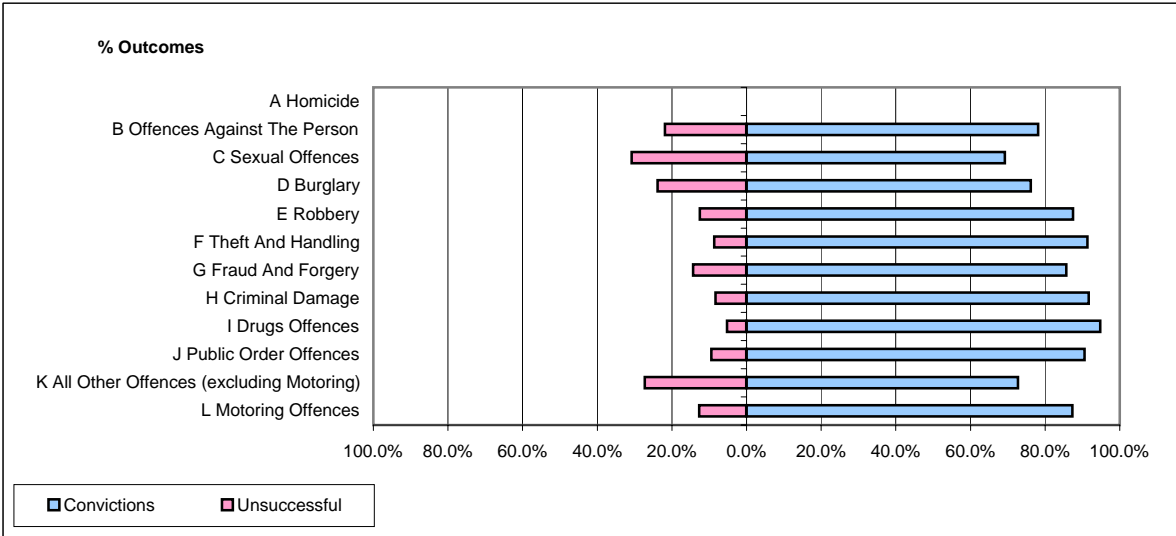


**CPS OUTCOMES BY PRINCIPAL OFFENCE CATEGORY**

**February 2007**

**P26-Norfolk**



	Convictions		Unsuccessful	
	Number of Defendants	%	Number of Defendants	%
<b>A Homicide</b>	<b>0</b>	<b>#DIV/0!</b>	<b>0</b>	<b>#DIV/0!</b>
<b>B Offences Against The Person</b>	<b>107</b>	<b>78.1%</b>	<b>30</b>	<b>21.9%</b>
<b>C Sexual Offences</b>	<b>9</b>	<b>69.2%</b>	<b>4</b>	<b>30.8%</b>
<b>D Burglary</b>	<b>16</b>	<b>76.2%</b>	<b>5</b>	<b>23.8%</b>
<b>E Robbery</b>	<b>7</b>	<b>87.5%</b>	<b>1</b>	<b>12.5%</b>
<b>F Theft And Handling</b>	<b>147</b>	<b>91.3%</b>	<b>14</b>	<b>8.7%</b>
<b>G Fraud And Forgery</b>	<b>6</b>	<b>85.7%</b>	<b>1</b>	<b>14.3%</b>
<b>H Criminal Damage</b>	<b>55</b>	<b>91.7%</b>	<b>5</b>	<b>8.3%</b>
<b>I Drugs Offences</b>	<b>54</b>	<b>94.7%</b>	<b>3</b>	<b>5.3%</b>
<b>J Public Order Offences</b>	<b>86</b>	<b>90.5%</b>	<b>9</b>	<b>9.5%</b>
<b>K All Other Offences (excluding Motoring)</b>	<b>40</b>	<b>72.7%</b>	<b>15</b>	<b>27.3%</b>
<b>L Motoring Offences</b>	<b>466</b>	<b>87.3%</b>	<b>68</b>	<b>12.7%</b>
<b>Admin Finalisations</b>	<b>0</b>	<b>0.0%</b>	<b>31</b>	<b>100.0%</b>
<b>TOTAL</b>	<b>993</b>	<b>84.2%</b>	<b>186</b>	<b>15.8%</b>