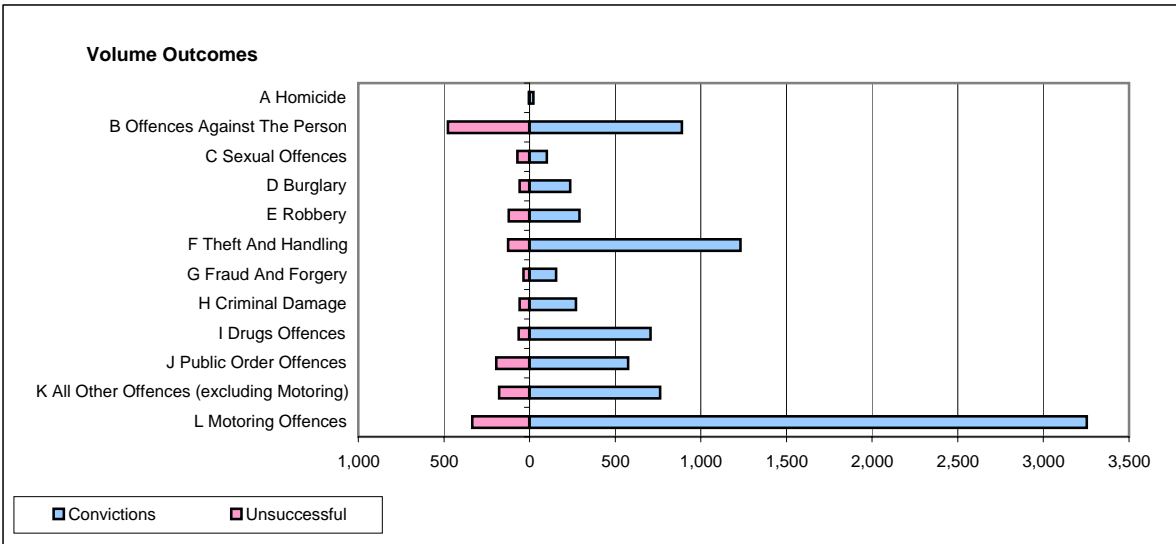
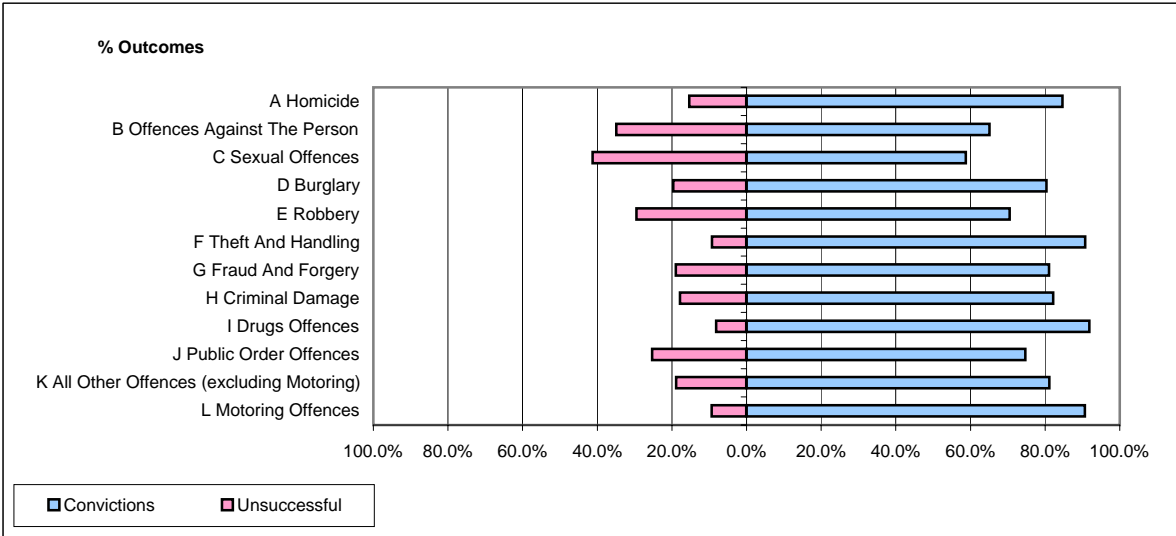


**CPS OUTCOMES BY PRINCIPAL OFFENCE CATEGORY**

**February 2007**

**P25-Metropolitan&City**



|  | Convictions          |              | Unsuccessful         |              |
|--|----------------------|--------------|----------------------|--------------|
|  | Number of Defendants | %            | Number of Defendants | %            |
| <b>A Homicide</b>                                | 22                   | 84.6%        | 4                    | 15.4%        |
| <b>B Offences Against The Person</b>             | 889                  | 65.1%        | 477                  | 34.9%        |
| <b>C Sexual Offences</b>                         | 101                  | 58.7%        | 71                   | 41.3%        |
| <b>D Burglary</b>                                | 237                  | 80.3%        | 58                   | 19.7%        |
| <b>E Robbery</b>                                 | 292                  | 70.5%        | 122                  | 29.5%        |
| <b>F Theft And Handling</b>                      | 1,231                | 90.7%        | 126                  | 9.3%         |
| <b>G Fraud And Forgery</b>                       | 154                  | 81.1%        | 36                   | 18.9%        |
| <b>H Criminal Damage</b>                         | 271                  | 82.1%        | 59                   | 17.9%        |
| <b>I Drugs Offences</b>                          | 707                  | 91.8%        | 63                   | 8.2%         |
| <b>J Public Order Offences</b>                   | 575                  | 74.7%        | 195                  | 25.3%        |
| <b>K All Other Offences (excluding Motoring)</b> | 762                  | 81.2%        | 177                  | 18.8%        |
| <b>L Motoring Offences</b>                       | 3,253                | 90.7%        | 335                  | 9.3%         |
| <b>Admin Finalisations</b>                       | 0                    | 0.0%         | 483                  | 100.0%       |
| <b>TOTAL</b>                                     | <b>8,494</b>         | <b>79.4%</b> | <b>2,206</b>         | <b>20.6%</b> |